

20th IMISCOE Annual Conference

3-6 July 2023

Warsaw & online

MIGRATION AND INEQUALITIES

In search of answers and solutions

IMISCOE



UNIVERSITY
OF WARSAW



CENTRE OF
MIGRATION
RESEARCH



RESEARCH
UNIVERSITY
EXCELLENCE INITIATIVE



CENTRE
of EXCELLENCE
in SOCIAL
SCIENCES

Contents

About the organisers	4
University of Warsaw	4
Centre of Migration Research (CMR)	6
Centre of Excellence in Social Sciences (CESS)	7
About partners	8
Overview:	10
2022 Achievements	10
Welcomes from the Organising Committee, Host Institution & from the IMISCOE Coordinators	11
Conference Committee	18
Organising Committee	18
Engaged CMR Members	19
Conference venue	20
WI-FI	22
Health and Safety Requirements for IMISCOE Conference	36
Information for Chairs at the IMISCOE Conference	37
Code of Conduct	40
Opening Plenary: Inequalities as one of the key challenges for the 21st century	46
Plenary Session: Inequalities and migration – in search of the answers	48
Plenary Session: Inequalities and knowledge production	50
Plenary Session: Forced migration following the war in Ukraine and its implications for inequalities	52
Closing plenary: Inequalities and migration – in search of solutions	54
Side events:	56
July 3, 2023, Monday	57
July 4, 2023, Tuesday	58
July 4, 2023, Tuesday	63
July 5, 2023, Wednesday	64
July 6, 2023, Thursday	67
Detailed program	68
Monday, 3 July, 13:00-14:30	68
Monday, 3 July, 14:50-16:20	69
Tuesday, 4 July, 9:00-10:30	70

Tuesday, 4 July, 10:50-12:20.....	71
Tuesday, 4 July, 14:50-16:20.....	72
Tuesday, 4 July, 16:40-18:10.....	73
Wednesday, 5 July, 9:00-10:30.....	74
Wednesday, 5 July, 14:50-16:20.....	77
Wednesday, 5 July, 16:40-18:10.....	78
Thursday, 6 July, 9:00-10:30.....	79
Thursday, 6 July, 10:50-12:20.....	80
About Warsaw.....	82
Enjoy Warsaw.....	82
How to get to Warsaw.....	83
How to get to the city center from Chopin airport.....	84
How to get from Modlin airport to Warsaw.....	84
How to get around in Warsaw.....	85
Palace of Culture and Science.....	86
Conference Dinner venue.....	86
How to get there?.....	87
About IMISCOE.....	88
Our mission.....	88
Research activities.....	88
Publications.....	88
Events.....	88
Training and Awards.....	89
List of IMISCOE Member Institutes.....	89
Governance of IMISCOE.....	92
Migration Research Hub.....	97
IMISCOE Awards.....	98
Forthcoming IMISCOE Events.....	98
Collaboration with Comparative Migration Studies.....	98
IMISCOE 2024 SPRING CONFERENCE.....	99
LISBOA JULY 2024 XXI IMISCOE Annual Conference.....	100
Migration Podcast.....	101
Central and Eastern European Migration Review (CEEMR).....	102
Open Science.....	103

About the organisers

University of Warsaw

The University of Warsaw is ranked in the top 3% of the world's best universities. Founded in 1816, it is currently the largest in Poland and the best research university in the country. It was ranked first in the Excellence Initiative-Research University competition.

At present, about 40,000 people study at the University of Warsaw (1st, 2nd and long cycle studies, doctoral programmes and post-diploma courses) and 6 of its graduates have won Nobel Prizes. Scientists participate in more than 1,300 projects funded by national and international research programmes, such as the EU Framework Programmes, the European Science Foundation, the European Cooperation in Science and Technology Research, the European Economic Area and Norwegian Grants, the European Molecular Biology Organisation. The university is also very active in terms of international collaboration, with around 350 active cooperation agreements with foreign partners and an important role in the 4EU+ Alliance (as part of the European Commission's pilot programme 'European Universities').

<https://en.uw.edu.pl/>



UNIVERSITY
OF WARSAW



Centre of Migration Research (CMR)

The Centre of Migration Research (CMR) is a research-intensive interdisciplinary unit of the University of Warsaw specialising in studies of migration and mobility processes in Poland and Europe.

The CMR is one of the oldest and largest migration research centres in Europe. It was established at the University of Warsaw in 1993. From the beginning, the Centre has studied internal and international mobility as an endogenous part of social change, first in post-socialist Central and Eastern Europe, then globally. Today, with 75 researchers, the CMR remains faithful to the research and organisational ambitions it had when it was founded three decades ago. The interdisciplinary team, representing among others economics, sociology, law and political science and anthropology is divided into three research units (Migration Policies Research Unit, Socio-Cultural Research Unit and Socio-Economic Research Unit), which work closely together in the interdisciplinary research projects carried out at CMR (over the years, more than 70 research projects, including the most prestigious ones).

CMR has been an associate member of IMISCOE for 15 years and a full member for 13 years. It has a proven organisational capacity: it regularly organises national and international conferences and seminars on migration issues, promotes research results and integrates the community of migration researchers.

<https://www.migracje.uw.edu.pl/en/>



**CENTRE OF
MIGRATION
RESEARCH**



https://twitter.com/CMR_Warsaw



Centre of Excellence in Social Sciences (CESS)

The Centre of Excellence in Social Sciences is one of the activities carried out within the framework of the Excellence Initiative – Research University (EI-RU) programme of the Polish Ministry of Science and Higher Education. The Centre fits perfectly into the objectives of the EI-RU scheme that aims to improve the quality of research at the best Polish universities. The primary objective of CESS is to coordinate interdisciplinary research activities in the field of social sciences carried out at the University of Warsaw. CESS is intended to be an institutional platform for supporting research that 1) reflects current international trends in the social sciences, especially those related to the major contemporary challenges, i.e. inequalities, mobility and migration, demographic changes, political changes, digital revolution, mediatisation and systemic risk (among others); 2) has the potential to compete with the best scientific activities on a global scale and also at the level of international grant competitions; 3) has a dimension that goes beyond the organisational units of the University of Warsaw; 4) is distinguished by its exemplary methodological level; 5) is open and inclusive.

Organisationally, CESS does not aim to carry out research on its own, but rather to support the development of the best individual researchers and research teams at the University of Warsaw, especially those who are striving for excellence, especially in their methodological and practical competences, and individual researchers and teams using advanced quantitative and qualitative methods.

<https://cess.idub.uw.edu.pl/en/home-page/>



About partners

On behalf of the organizers of the conference, we would like to express our acknowledgements to our partners: IKEA, International Organization for Migration - IOM , Organisation for Economic Cooperation and Development – OECD and the Mayor of the Capital City of Warsaw for providing honorary patronage and support for the event.

We would like to thank the Zachęta - National Gallery of Art for their support in organising side events and TokFM Radio and OKO.press for providing media patronage for the conference.



**Honorary patronage
of the Mayor of Warsaw**



Narodowa Galeria Sztuki



OKO.press



At IKEA, we believe in the strength of diversity and all the benefits that come within. We know that differences are what inspire us and what helps us to look at things from different perspectives.

That is one of the reasons we decided to support more than 2800 refugees in 22 countries. In Poland, we started the Skills for Employment (pol. Liczą się umiejętności) internship program in 2022, employing 10 refugees to help them in acquiring skills in the labour market. In March 2023, IKEA expanded the program to 46 participants in 5 stores (Janki, Targówek, Kraków, Łódź and Gdańsk).

The initiative is supported by the Ocalenie Foundation, the leading partner, as well as by Centrum Wsparcia Imigrantów i Imigrantek in Gdańsk, Salam Lab and Internationaler Bund Polska in Kraków, acting locally.

We are also sharing our learnings with other businesses, encouraging them to engage in refugee support and integration.

Overview:

IOM has been present in Poland since 2002 supporting safe and orderly migration with respect for human rights for the benefit of all. Through agreement with the Government of Poland, IOM Poland works with state institutions, local governments, employers and educators to conduct outreach activities, offer training and provide direct support to people with migration experience (including Polish citizens).

Prior to 2022, IOM focused on protection and labour market inclusion activities, for example promoting ethical recruitment, respect for the rights of migrants, the elimination of forced labour, and the prevention of human trafficking.

Since February 2022 however, IOM significantly expanded its operations to respond to the needs of individuals who fled the war in Ukraine. The conflict in Ukraine triggered one of the largest humanitarian crises on record with over 8.8 million people crossing the border into Poland in the first 10 months of the crisis. Poland has hosted up to 1.6 million people fleeing the war under



temporary protection. As individuals seek safety in the country, IOM works with the Polish authorities and with humanitarian partners to address the basic and humanitarian needs of refugees, to enhance their access to services, to support socio-economic inclusion, to promote dignified living conditions, and to provide protection and mental health support.

2022 Achievements

Total number of services
provided across all sectors:

259,799

Total number of individuals
supported:

105,920

Welcomes
from the Organising Committee,
Host Institution
&
from the IMISCOE Coordinators

It is our great pleasure to welcome you all to the 20th IMISCOE Annual Conference! The IMISCOE Conference has long served as an invaluable platform for researchers to exchange knowledge, share insights, and engage in meaningful discussions on migration-related issues. Its power lies in the richness and diversity of participants' perspectives. This year's conference theme, "Migration and inequalities. In search of answers and solutions," invites us to reflect on the complex challenges posed by migration in an unequal world, acknowledging the urgent need for innovative approaches to address inequalities.

Throughout this four-day event, we have brought together leading scholars, policymakers, and practitioners from around the globe. Conference program is packed with thought-provoking keynote lectures, panel discussions, workshops, and networking opportunities. We encourage you to actively engage with sessions, exchange ideas, and challenge conventional wisdom. Your unique perspective, experience, and expertise will undoubtedly enrich the discussions and contribute to advancing our collective understanding of migration.

Moreover, we encourage you to take full advantage of the virtual conference platform, which provides an interactive and accessible space for networking and knowledge sharing. Whether you are joining us online or participating in the in-person sessions, we trust that you will find the conference environment stimulating and conducive to fruitful interactions.

May the 20th Annual IMISCOE Conference catalyse new collaborations, lasting partnerships, and ideas that will shape the future of migration studies. Enjoy the conference, and make the most of this remarkable opportunity to connect.

Anita Brzozowska and Paweł Kaczmarczyk (on behalf of the Conference Committee)



Anita Brzozowska



Paweł Kaczmarczyk

It is my great pleasure to extend a warm welcome to all of you on behalf of the University of Warsaw.

As Rector of University of Warsaw, I am honoured to host this prestigious conference, which brings together participants from around the globe, from different disciplines and backgrounds, to share their research findings, experiences, and practical solutions.

At the University of Warsaw, we embrace the pursuit of knowledge, intellectual curiosity, and critical thinking, facing the complexities of the 21st century. Our vibrant academic community remains committed to promoting interdisciplinary collaboration, innovative research, and disseminating knowledge that transcends borders. Through forums like this conference, we strive to push the boundaries of knowledge, exploring new frontiers and addressing pressing challenges of our times. The theme of this conference reflects our commitment as a research-intensive university to embrace complexity and seek comprehensive approaches to global issues. I firmly believe that fostering interdisciplinary collaboration and dialogue throughout this conference can generate fresh insights, drive impactful research, and influence evidence-based policy decisions.

Beyond the academic program, I invite you to explore the remarkable city of Warsaw, which offers an array of cultural experiences and vibrant neighbourhoods. I hope you take the time to immerse yourself in its charm and hospitality, forging new connections and creating lasting memories.

I wish you all a rewarding and intellectually stimulating conference experience.



*Professor Alojzy Z. Nowak,
Rector of the University
of Warsaw*

*Professor Alojzy Z. Nowak,
Rector of the University of Warsaw*

The path towards more inclusive, open and diverse IMISCOE events

Reflections from IMISCOE Coordinators Jean-Michel Lafleur & Daniela Vintila and Network Officer Angeliki Konstantinidou, Centre for Ethnic and Migration Studies (CEDEM) of the University of Liège

The 2023 IMISCOE Annual Conference hosted by the Centre of Migration Research (CMR) at the University of Warsaw is distinctive in several ways. First, the on-site part of this conference takes place in Warsaw, a city where the human consequences of the Russian invasion of Ukraine are very visible. This is particularly important for our IMISCOE community. As such, in the preparation for this Annual Conference, CMR and the IMISCOE Network Office have made it a priority that the situation of displaced Ukrainians receives the attention it deserves during our conference. During the conference, numerous sessions will provide our research community an opportunity to reflect on these events, hear the voices of some of those affected by the conflict and, more generally, discuss the role of migration scholars in difficult contexts like this one. On behalf of the Network Office, we therefore wish to sincerely thank all colleagues at CMR and at the University of Warsaw for their efforts in this regard, for hosting our IMISCOE conference in such difficult circumstances, and for the ex-





cellent collaboration we have had to create a tailor-made conference environment for on-site and online participants.

Second, this conference is distinctive as it marks the 20th annual gathering of our IMISCOE Community. Our research network has gone a long way since its first Annual Conference. From being a network of about 19 European institutes holding a conference of a couple hundred participants, we have now become a network with a global ambition that gathers 66 Member Institutes and welcomes over 1300 participants at our Annual Conference. During this enlargement process, IMISCOE has taken great care to maintain the “community dynamic” that has always been so highly appreciated by our members, while also taking important steps to ensure inclusiveness and diversity in our events.

Since we started the coordination of IMISCOE in 2022, our Network Office at the Centre for Ethnic and Migration Studies (CEDEM) of the University of Liège has committed to work together with all IMISCOE members and governance bodies to put our research network on the path to become more inclusive, open and diverse. The first actions implemented as part of this strategy were adopted for the 2022 Annual Conference in Oslo that allowed blending on-site and online participation. It was a necessary measure given the uncertain travel plans during the COVID-19 pandemic. It was also a measure highly appreciated by the hundreds of colleagues who were not able to travel on-site due to health reasons, family obligations, visa restrictions or costs. As shown in our post-conference survey, enabling some form of online participation is crucial when aiming for inclusive events. As such, our 2023 Annual Conference was also designed to provide both an on-site and an online space for participation.

In addition, we also decided to extend the conference days to allow more colleagues to present their work at our flagship event and engage in scholarly exchanges with colleagues from all over the world/ An IMISCOE Code of Conduct was also designed to make everyone feel safe and comfortable during our Annual Conference. As part of this, we further introduced the position of Trustee in the Conference Organising Committee, so that any possible issue that participants may face during the event could be directly discussed with the Trustee. Very importantly, ensuring inclusive events also means considering the situation of colleagues from different parts of the world and at different stages of their careers. As such, an important measure already in place since 2022 has been the introduction of differentiated fees for scholars based in institutes from outside the EU/OECD, as well as discounted conference registration fees for PhD students from all over the world.

In the preparation for this 20th Annual Conference, additional steps have been taken with the setting up of an IMISCOE Executive Committee on Diversity, Equality and

Inclusion within our governance structure. This new committee has been working closely throughout the year with the conference hosts as well as our Standing and Executive Committees to ensure that IMISCOE's commitment to be inclusive and diverse materializes in the practice of the network.

Overall, these are just some steps that contribute to greater inclusivity in our Network, but this journey is still long. We are strongly committed to continue progressing on this front, joining efforts in our community via regular collaboration with our Board of Directors, the Executive Board, our individual members, our incredibly active PhD Network and all our Executive and Standing committees. Counting also with the crucial support of our event hosts, we can work together to make our IMISCOE community more inclusive, open and diverse.

We wish you all an excellent conference and hope to see you in many IMISCOE events in the future.

Jean-Michel Lafleur, Coordinator of IMISCOE

Daniela Vintila, Associate Coordinator of IMISCOE and Senior Network Officer

Angeliki Konstantinidou, Network Officer



Conference Committee

Anita Brzozowska

Agata Górny

Thais França

Paweł Kaczmarczyk

Angeliki Konstantinidou

Mateusz Krawczyk

Jean-Michel Lafleur

Karolina Łukasiewicz

Billie Martiniello

Anna-Lisa Müller

Anders Neergaard

Marta Pachocka

Daniela Vintila

Organising Committee

Joanna Bagadzińska

Anita Brzozowska

Kamila Fiałkowska

Barbara Jancewicz

Paweł Kaczmarczyk

Mateusz Krępa

Karolina Łukasiewicz

Marta Pachocka

Engaged CMR Members

Izabela Częstkiewicz

Małgorzata Goleń

Aleksandra Gulińska

Magdalena Lesińska

Justyna Leszczyńska

Elżbieta Mirga-Wójtowicz

Nasim Mondal

Marta Pietrusińska

Katarzyna Porwit

Dominika Pszczółkowska

Renata Stefańska

Adam Suwiński

Andrei Yelisseyeu

Antoni Wiśniewski

Acknowledgements

In this place, we would like to express our greatest appreciation to everyone who helped us at various stages of preparations. Special acknowledgement to everyone from the Center of Migration Research who has been involved in this huge undertaking and without whom its realization would not have been possible.

Conference venue

The conference will be organised in a hybrid format, with the majority of sessions taking place on-site in the premises of the University of Warsaw along with several online sessions. On-site sessions will be held at the Faculty of Modern Languages at Dobra 55, located in the green heart of Warsaw by the Vistula. The building is fully adapted to the needs of physically disabled users and easily approached from the city centre. Right next to the University of Warsaw facilities, there are the Royal Castle, Copernicus Science Centre, the Museum of Modern Art, the Multimedia Fountain Park and the revitalised industrial space of Elektrownia Powiśle with food hall and different dining concepts. Furthermore, a number of side events will take place in Zachęta – National Gallery of Art located on Malachowskiego Square 3 and in the Palace of Culture and Science on Defilad Square (details on pp. 56–67).





WI-FI

For those who are not able to connect to eduroam during the conference, please use our guest internet - you can find vouchers with the login and password at the registration stand.

To activate Wi-Fi access connect to the **Dobra 55** Guest Access network, wait for the web browser to open, and you will be taken to the authorization portal. Enter the given code into the authorization portal. One code authorizes one device. The authorization should be enough to ensure Wi-Fi access for the duration of the whole conference.



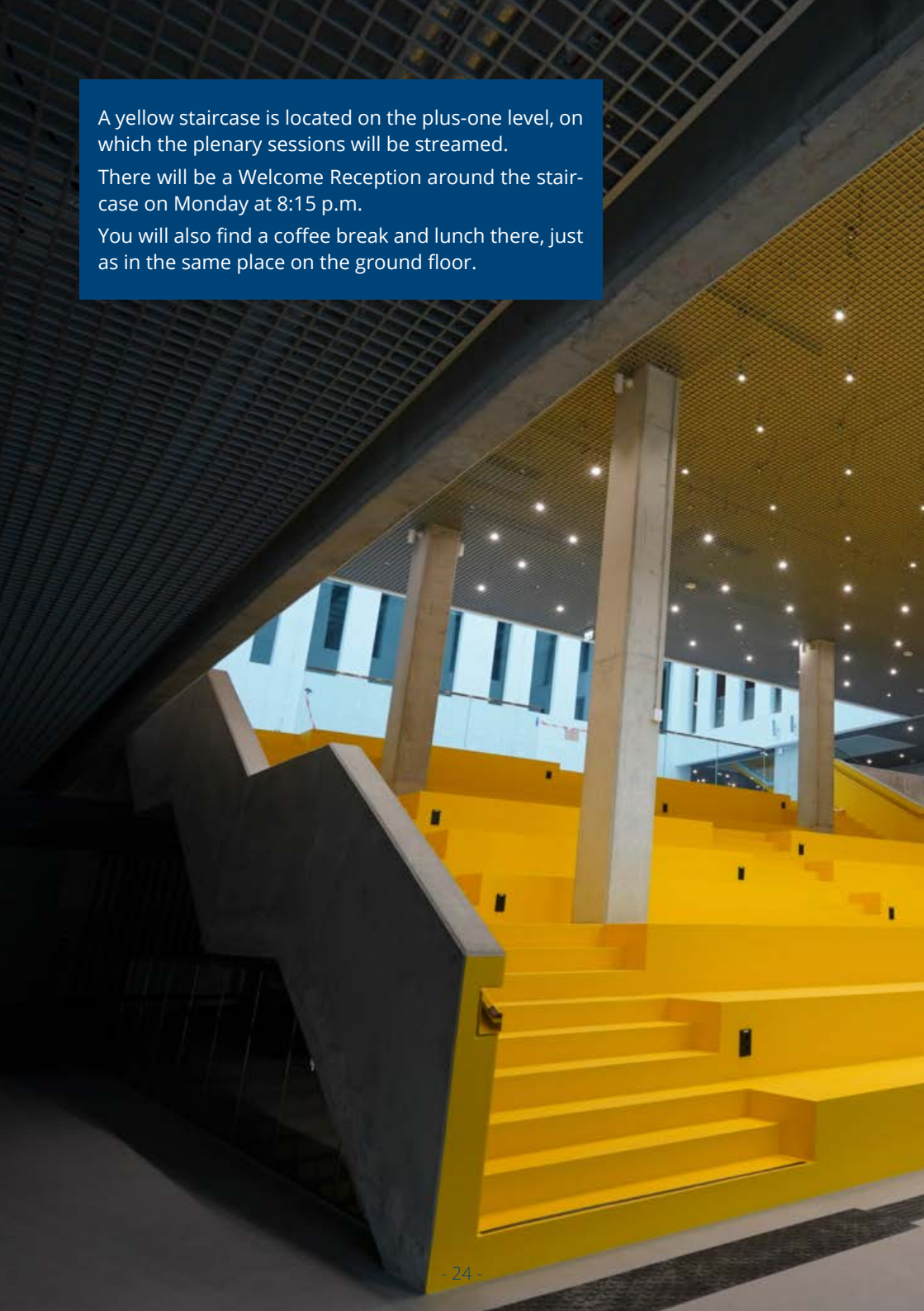
The conference takes place at the Faculty of Modern Languages (building No. 15) at **Dobra 55** Street.

Note: entrance to the building and registration from **Browarna Street**.

A yellow staircase is located on the plus-one level, on which the plenary sessions will be streamed.

There will be a Welcome Reception around the staircase on Monday at 8:15 p.m.

You will also find a coffee break and lunch there, just as in the same place on the ground floor.







UNIVERSITY OF WARSAW

During World War II, Czesław Miłosz, a student of the University (in 1932), who was later to win a Nobel Prize for Literature (1980), worked at the Old Library as a caretaker.

The Main Gate is one of the most distinguishable symbols of the University. It is ornamented with a crowned eagle surrounded with five stars which symbolise the first five faculties of the University.

The University's oldest building was constructed before 1643. It was initially the summer residence of the kings of Poland: Władysław IV, Jan Kazimierz, who gave the palace its name, and Jan III Sobieski.

THE MAIN CAMPUS 26/28 Krakowskie Przedmieście Street

The university life concentrates in three campuses: Main, Ochota and Służew, located in different districts of Warsaw. The University's historic seat, located in the heart of Warsaw, is widely appreciated for its elegant architecture. Impressive edifices, dating back to the 17th century, rank high among Warsaw's sightseeing musts.

In the first part of the 20th century the St. Roch Hospital served as an actual city clinic.

The Column Hall is the most lavish place in the Former Museum Building. It is open for guests every Wednesday from 10 a.m. to 5 p.m.

Fryderyk Chopin, the most famous Polish composer, lived in the Building with his parents and sisters. He was a part of the University's Music, the part of University.

MAIN CAMPUS MAP

Main campus > University of Warsaw Library, 600 m

 8 min

 No. 105 – 7 min

1 KAZIMIERZOWSKI PALACE

seat of the University authorities
Admissions Office
Office for Student Affairs
International Relations Office
Office for Persons with Disabilities
Golden Hall, Senate Hall

2 FORMER SEMINAR BUILDING

Faculty of Law and Administration

3 FORMER RECTORY BUILDING

Faculty of Oriental Studies

4 FORMER SCHOOL SUPERINTENDENT BUILDING

IT Center

5 MINERALOGICAL PAVILION

Faculty of Polish Studies

6 AUDITORIUM BUILDING

7 FORMER MUSEUM BUILDING

Faculty of History

8 MAIN SCHOOL

Archaeology Institute

9 OLD LIBRARY BUILDING

Auditorium Hall

10 UNIVERSITY GATE

11 AUDITORIUM MAXIMUM

Adam Mickiewicz Hall

12 CZETWERTYŃSKI-URUSKI PALACE

Faculty of Geography and Regional Studies

13 TYSZKIEWICZ-POTOCKI PALACE

Centre of Polish Language and Culture
for Foreigners "Polonicum"
Museum of the University of Warsaw
Guest Hall (Ball Room)

14 ST. ROCH HOSPITAL

Institute of Polish Culture

15 COLLEGIUM IURIDICUM

16 BUILDING OF THE APPLIED LINGUISTICS AND THE MODERN LANGUAGES FACULTIES

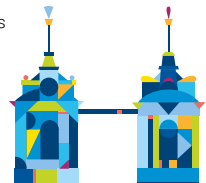
17 UNIVERSITY OF WARSAW LIBRARY

18 INSTITUTE OF PHILOSOPHY

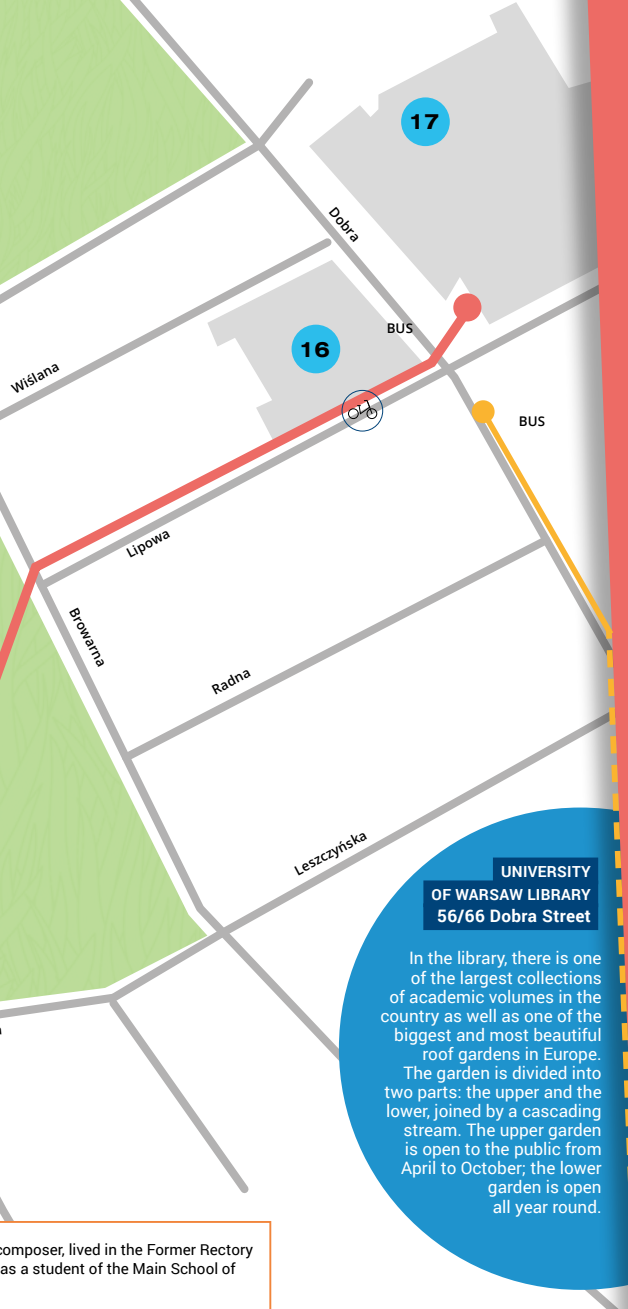
19 FACULTY OF POLITICAL SCIENCE AND INTERNATIONAL STUDIES



– Veturilo, city bikes



Press Office UW © 2017



UNIVERSITY
OF WARSAW LIBRARY
56/66 Dobra Street

In the library, there is one of the largest collections of academic volumes in the country as well as one of the biggest and most beautiful roof gardens in Europe. The garden is divided into two parts: the upper and the lower, joined by a cascading stream. The upper garden is open to the public from April to October; the lower garden is open all year round.

composer, lived in the Former Rectory as a student of the Main School of

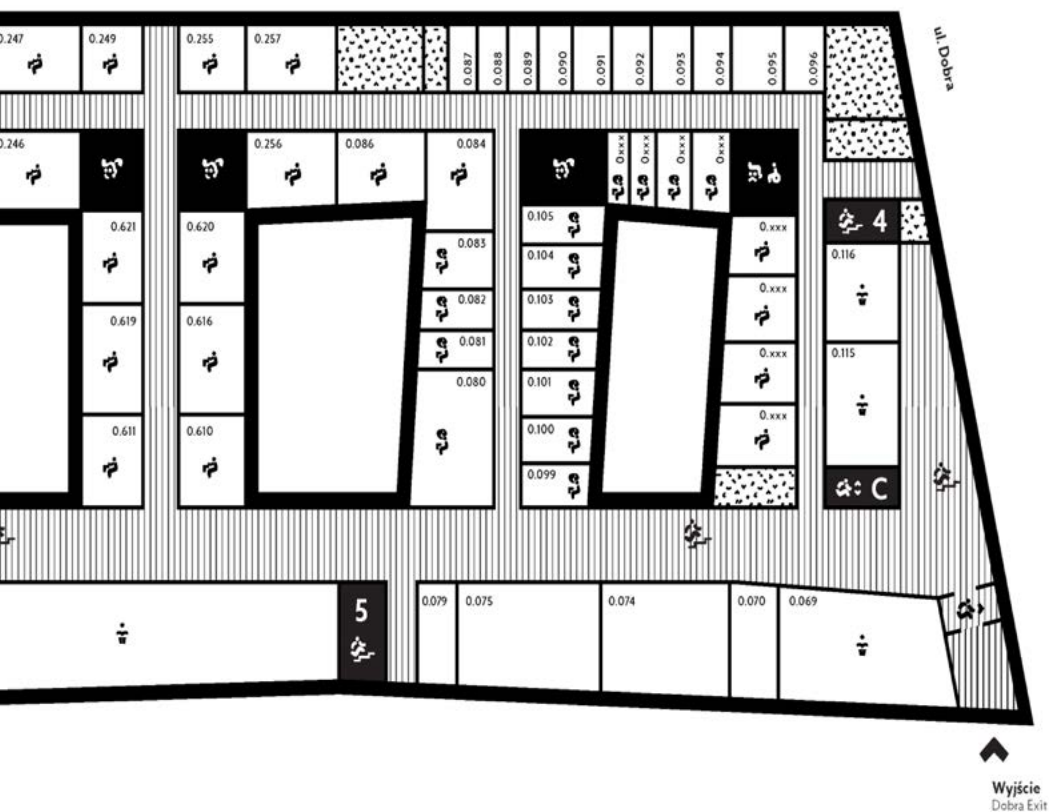
Guests interested in visiting the historical campus can attend tours offered by the University of Warsaw Museum (13 on the map).
To arrange a tour, call (+48) 22 55 20 107 or e-mail muzeum.uw@adm.uw.edu.pl.



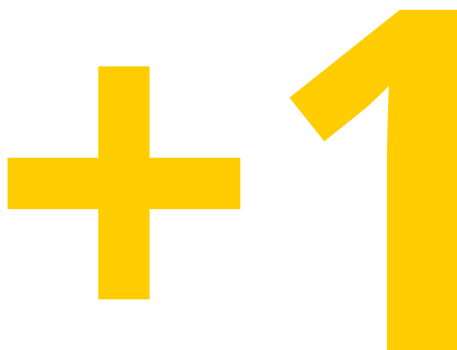
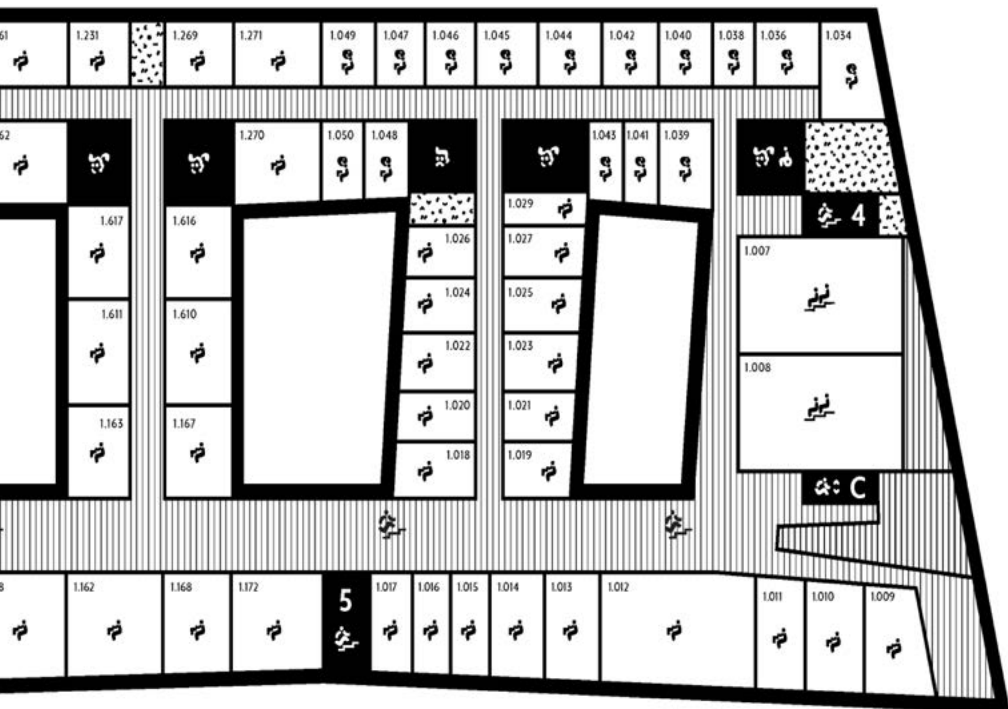
Find out more:

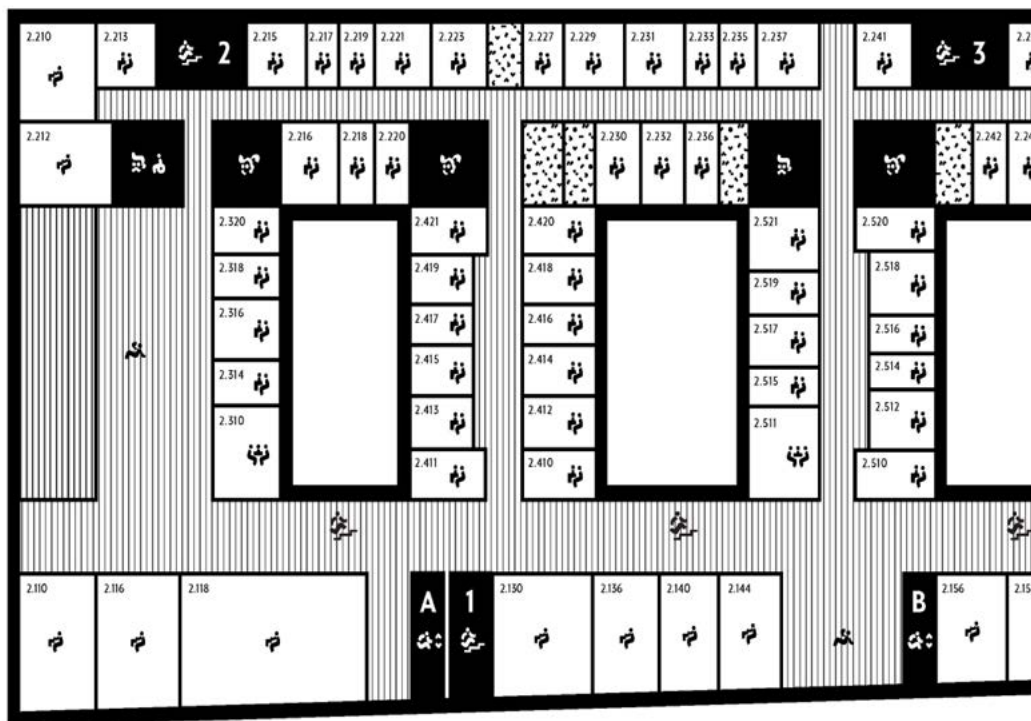


<https://www.asc.uw.edu.pl/about-us/floor-plan/>



O

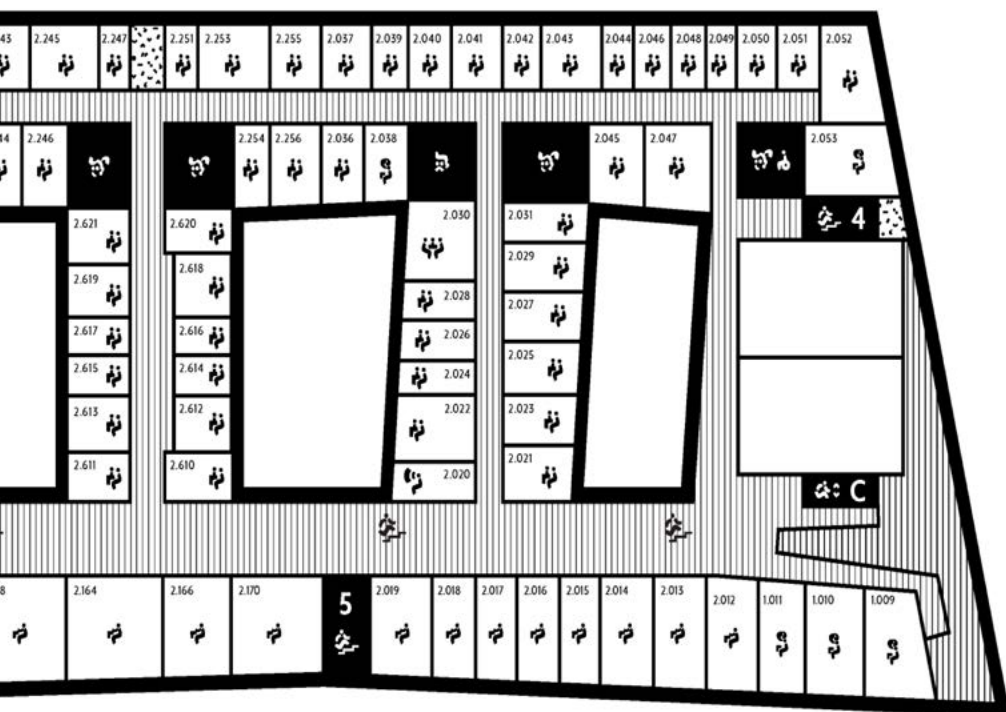




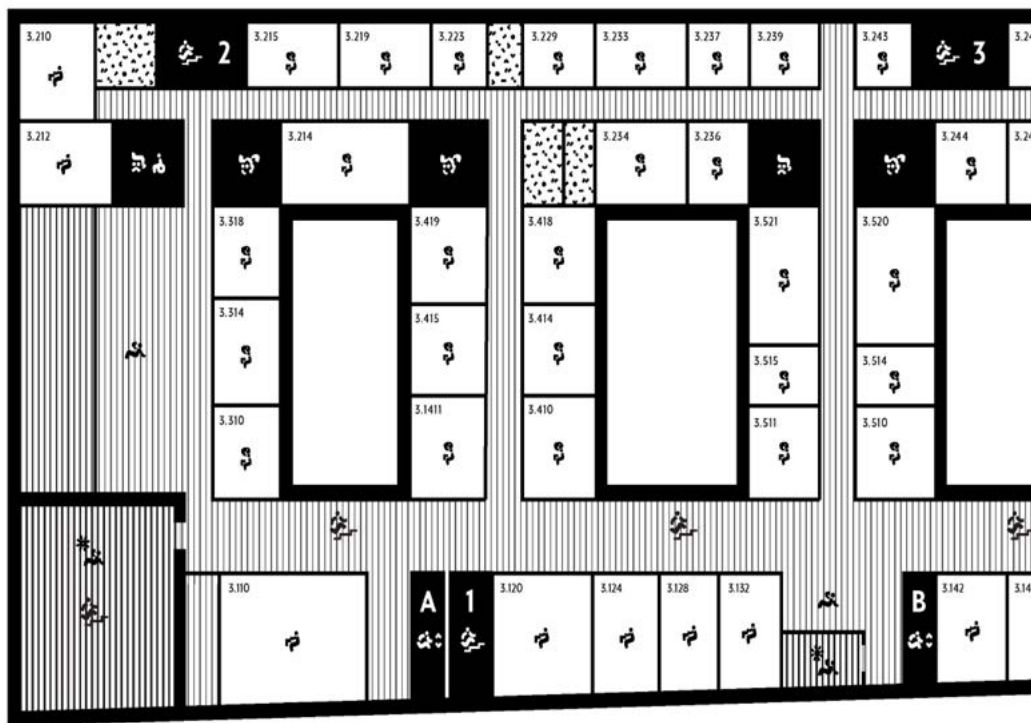
Find out more:



<https://www.asc.uw.edu.pl/about-us/floor-plan/>



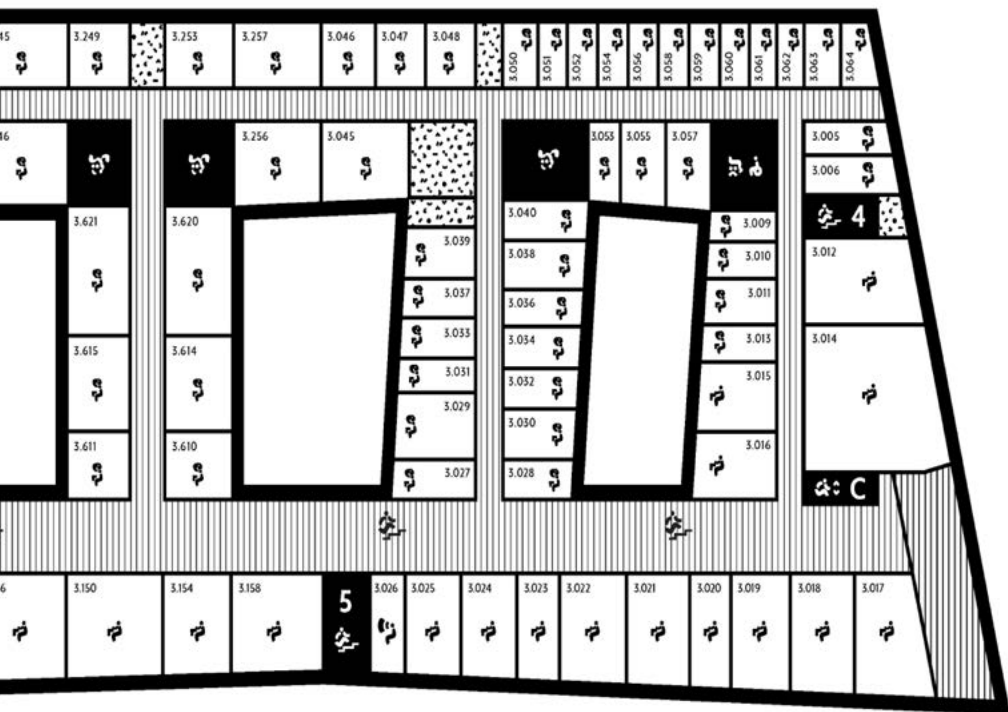
+2



Find out more:



<https://www.asc.uw.edu.pl/about-us/floor-plan/>



Health and Safety Requirements for IMISCOE Conference

Dear Participants,

To sustain a healthy and safe environment for our in-person event, we strongly recommend frequent handwashing and sanitizing.

Masks aren't required, but are optional for all attendees. Both hand sanitizers and masks can be found at the registration desk. Moreover, we encourage attendees to take an at-home COVID-19 rapid antigen test before travelling to Warsaw. Attendees should immediately remove themselves from participation if they test positive or simply exhibit COVID-19 symptoms.



Information for Chairs at the IMISCOE Conference

The Chairs have an important role at the IMISCOE conference, contributing to facilitate important research exchange on migration themes – and as an integral part of this, making conference participation an inclusive and safe experience for everyone.

We would therefore like to draw the attention of all Chairs to some important points:

- You can find the details of the session that you are chairing (including the room number and/or the Webex link) after logging in on the conference portal. Your session will also be automatically marked under the block “My sessions”.
- Please contact all presenters in the session you’re chairing in advance. Please note that it is your responsibility to follow-up with your session participants.

All email addresses are available in the program portal – click on participants' names. Please give concrete instructions about length of time for each presentation in advance, to allow presenters to prepare adequately (for instance, if your session has 3 papers, the timing is naturally different than if there are 5 papers).

- If the session has a discussant, please agree with them in advance about their role and importantly time-use. If the session does not have a discussant, you can either encourage paper givers to comment on each other's presentations (for instance, via a pairing system in which each paper giver will provide feedback to the presentation of another colleague in the session) or open the Q&A with the general audience after the paper presentations. As chair, you can also ask questions or make comments regarding the papers during the Q&A, if you wish.
- Please make sure that you prepare your session in such a way that there is some time left for the general Q&A with the audience and that paper givers will have the opportunity to react to the comments received.
- Please make sure you know which is the physical room in Warsaw and/or the Webex link allocated to your session well in advance of your session's starting time. This information will be upload directly on the conference portal, so please make sure to check it regularly.
- Please go to the on-site and/or virtual room assigned to your session 10 mins before your session should start. Please ensure that the on-site and/or virtual equipment is ready for use – and have presenters upload/screen-share all presentations before the session starts.
- If you are attending a hybrid session and you are on-site, there are computers in each session room at the University of Warsaw – with Webex downloaded and tested for use in the hybrid format. The password/login information will be available on a printout in each of the rooms that the conference uses.
- If you are attending a hybrid session and you are online, the conference assistant who will be present in the on-site room allocated to your session in Warsaw will open the computer in that room and the Webex link for online participants to make sure that everything works fine. If you are participating virtually, please double-check and test that the Webex interface works on your computer, and that the sound works both ways, well in advance of your presentation. Please encourage the participants in your session who will attend online to do the same. A special Drop-In Session will be organized the week before the confer-

ence starts, to allow participants joining online to test the Webex functionalities prior to the conference, if they wish (please check the conference portal where the information regarding the date/time of the Drop-in session will appear soon)). In addition, a special Online Support Centre will also give assistance during the entire duration of the conference to participants joining via Webex.

- If you are attending a fully online session, just make sure that you follow the suggestions indicated above on how to connect to Webex and test your Webex functions prior to the start of your session.
- On-site assistants will be present in Warsaw to support you for the organization of on-site or hybrid panels, whereas the technical assistants via the Online Support Centre would be able to help you with any technical issues that you may have for fully virtual or hybrid sessions.
- Please always make sure that your session starts on time, allocate time fairly between papers, and end all sessions on time. Plan for transition times.
- Please think carefully through how you will manage in person and/or online presenters – and session participants – in a good way in your session. During the Q&A, if you are attending on-site and chair a hybrid session, please check the Webex chat in case any participants joining online ask questions, raise their hands, etc. If you are attending online in a hybrid session, the assistant who will be present in your session will inform you of any on-site participant has questions or comments during the Q&A. If you are attending a fully virtual session, please make sure that you check the Webex chat yourself in case any participants ask questions, write comments in the chat, raise their hands, etc.
- To ensure the good visibility of your work in the conference program, we strongly advise you to create a profile on the IMISCOE Migration Research Hub, if you do not have one yet: <https://migrationresearch.com>. Also, please do not hesitate to share the information regarding your session on social media, by using the hashtag #IMISCOE2023.
- Please make sure that the session is an inclusive and safe environment for all conference participants.

Being a Chair of a session at the IMISCOE conference is a big responsibility, but it is also an opportunity to make conference participants' experience enjoyable.

We wish you a fruitful and inspiring IMISCOE conference – online or in person in Warsaw!

Code of Conduct



Revised version, 12/09/2022

Why do we need a Code of Conduct?

IMISCOE is a research network with a variety of activities, including the organisation of events, training, and the support of research and publications. This Code of Conduct aims to make sure that everyone involved in IMISCOE activities can work in a safe and respectful environment. To promote such environment, IMISCOE may adopt additional documentation to accompany this Code of Conduct.

With this Code of Conduct, IMISCOE seeks to prevent harassment and discrimination¹ of anyone involved in IMISCOE activities and to create a due course of action for situations where anyone may have experienced harassment or discrimination in the context of the network activities. The purpose of the Code of Conduct is to promote behaviour and exchanges in the network that:

- - Respect the dignity, individuality, and diversity of the people with whom they are in contact, whether in-person or online.
- - Recognise and respect academic freedom in engaging in research, dialogue and other forms of exchange amongst colleagues and participants in IMISCOE activities.
- Treat people with respect and understanding.
- Do not discriminate or condone direct or indirect discrimination on any grounds, including but not limited to sex, race, colour, ethnic or social origin, genetic features, language, religion or belief, political or any other opinion, membership of a national minority, property, birth, disability, age or sexual orientation.

1 In line with EU Charter of Fundamental Rights and the EU directives, this Code of Conduct refers to discrimination as either direct or indirect. Direct discrimination consists of treating someone differently solely because of their specific characteristics. Indirect discrimination refers to a rule or practice which seems neutral, but in fact has a particularly disadvantageous impact upon a person or a group of persons having a specific characteristic. Harassment is a form of discrimination. The unwanted conduct can take different forms, from verbal or written comments, gestures or behaviour, but it has to be serious enough to create an intimidating, humiliating or offensive environment. See also: https://ec.europa.eu/info/aid-development-cooperation-fundamental-rights/your-rights-eu/know-your-rights/equality/non-discrimination_en

- Promote equality of opportunity and inclusion.
- Create an environment free from harassment, bullying or intimidation, and where possible remove physical and other barriers to participation.

To what and to whom does the Code of Conduct apply?

This Code of Conduct applies to all actions and speech/comments of individual Members² and Member Institutes³ of IMISCOE in the context of activities of the Research Network. This includes IMISCOE Spring and Annual Conferences, training events (summer schools, PhD events), meetings of Executive or Standing Committees within the network, as well as meetings of the Executive Board or Board of Directors. The Code of Conduct gives guidelines for respectful behaviour and interactions in these activities as well as defining unacceptable behaviour and offering a course of action in cases of unacceptable behaviour. The Code of Conduct shall apply equally to face-to-face as well as online and hybrid activities.

All IMISCOE Member Institutes consent to the Code of Conduct as referred to in the IMISCOE Consortium Agreement, and all individual Members consent to the Code of Conduct as part of their individual membership. Participants in events, such as IMISCOE conferences, shall also consent to the Code of Conduct as part of the conference registration procedure. This Code of Conduct gives consequence to Article 10(1v) of the IMISCOE Consortium Agreement.

The Code of Conduct does not apply to events that are exclusively organised by IMISCOE members but which are advertised on IMISCOE webpages. It also does not cover events that are co-badged by IMISCOE, but are not

2 According to the IMISCOE Consortium Agreement, a Member means an individual who has paid the annual individual membership fee and signed the code of conduct; individual members are not directly represented in the Board of Directors, but can make themselves heard through the Vice Chair of the Board of Directors.

3 According to the IMISCOE Consortium Agreement, a Member Institute means a party which has signed the Agreement. From the moment an organisation expresses interest in joining the Network, until they sign the agreement, they are considered a Member-Elect.

directly organised by Standing Committees or members as part of IMISCOE activity. However, the network governing bodies will encourage institutional and individual members of IMISCOE to apply the principles of this Code of Conduct when organising such events.

The Code of Conduct does also not apply to views expressed directly in relation to the contents of research, presentations, and in academic discussions: the intention is not to restrict intellectual freedom in engaging in research, discussion, and dissemination of ideas, however contentious.

What is considered respectful behaviour?

Respectful behaviour is behaviour that helps to create an open, safe, and inclusive environment for activities and exchanges. This includes behaviour that:

- Enables all participants to constructively criticize the substance of each other's work. In promoting our ideas, each one will make every reasonable effort to minimise the risks of any harm arising for any person. Each one will be aware that some academic opinions and arguments may cause offence to some people but that this is not, of itself, a sufficient reason not to express those opinions and arguments. Each one will, nevertheless, be sensitive to the views of others and will present its views in a reasonable and thoughtful manner.
- Allows everyone to participate in a way that makes everyone feel safe and respected.
- Strives, individually and collectively, to increase participation of under-represented groups, especially racialised groups, in accordance with Article 8 of the IMISCOE Consortium Agreement.
- Makes sure that activities reflect core values in terms of inclusivity along a variety of diversities, including but not limited to sex, race, colour, ethnic or social origin, genetic features, language, religion or belief, political or any other opinion, membership of a national minority, property, birth, disability, age or sexual orientation.
- Ensures that everyone is aware of and feels safe to raise concerns

about whether the environment is truly open, safe, and inclusive.

- Pro-actively assists people who find themselves in a situation of potential harm.

What is considered unacceptable behaviour?

Unacceptable behaviour is any behaviour (actions/comments) that directly or indirectly harms another person or creates an unsafe or hostile environment for any person. This includes:

- Inappropriate actions or comments (speech) concerning a person's background, including but not limited to a person's race, gender, sexuality, ethnicity, or any other aspect.
- Any form of racism, discrimination, sexual harassment, intimidation, or any form of unwelcome solicitation of emotional or physical intimacy.
- Inciting or spreading hatred or violence.
- Using one's position or authority in a way that is considered inappropriate.
- Inappropriate photography, recording, or stalking.
- Advocacy of, or encouragement of, the above behaviours.

What is the procedure for resolving complaints?

It is important that there is a clear and easily accessible procedure for persons who feel they have experienced unacceptable behaviour and want to report this and/or call for appropriate actions. The Vice Chair of the Board of Directors, with the support of the IMISCOE Network Office, will make sure that such an appropriate procedure is in place, and that trustees are appointed accordingly. Therefore, as a complement to Article 10 of the IMISCOE Consortium Agreement on Defaults and Remedies, this Code of Conduct offers two routes of action for those who feel they have experienced unacceptable behaviour:

1. Talk to a Trustee and ask for informal resolution. All members are encouraged to raise any issues and grievances as early as possible, be-

fore they become a major problem. For every IMISCOE activity or event, there will be a Trustee who is clearly announced in documentation or on the website. The Trustee can be a person from the conference organising committee, the board of a Standing Committee, etc. All messages to and talks with the Trustee will be fully confidential. The Trustee can also advise on appropriate subsequent actions.

2. Report unacceptable behaviour and ask for formal resolution. Any person can formally report unacceptable behaviour to the Trustee by filing a formal complaint. In this case, the identity of the complainant needs to be revealed at least to the Trustee, but should be processed further in confidentiality, only between the parties involved in the complaint and its subsequent inquiry. The Trustee will attempt to settle the complaint with involvement by the Vice Chair of the Board of Directors. The Vice Chair of the Board of Directors and the Trustee will then jointly examine the complaint; notify the person or organisation against whom the complaint is directed and provide them with an opportunity, in a reasonable time period, to respond to the complaint; set up an inquiry into what happened that ensures the right of all parties to be heard and informed; and identify appropriate action. A formal complaint and the result of the inquiry needs to be reported to the IMISCOE Executive Board and to the IMISCOE Coordinator. The IMISCOE Executive Board and the Vice-Chair of the Board of Directors can ultimately take sanctions in response to complaints, which includes giving a person a warning, informing a person's institute of the complaint, and suspending the individual membership of a person. Once a year, the IMISCOE Coordinator will need to report to the IMISCOE Board of Directors what has been done in response to formal complaints.

Code of Conduct during the conference

If you have any specific concerns or questions regarding our Safe Space policy or the Code of Conduct, please contact the CMR Trustee, [Karolina Łukasiewicz at k.lukasiewicz@uw.edu.pl](mailto:Karolina.Lukasiewicz@k.lukasiewicz@uw.edu.pl).

Opening Plenary:

Inequalities as one of the key challenges for the 21st century

Monday, July 3rd | 18:00 – 20:00 | main hall. 0.410

Social and economic inequalities have been widely identified as one of the key challenges of the late 20th century, and no doubt continue to be in the current century. Various dimensions of these inequalities are also highlighted as directly and indirectly related to migration, both at the level of the factors determining mobility and at the level of its effects. The main purpose of the opening plenary session is to set the scene for the conference and highlight selected areas of the nexus between migration and inequality. In particular, this session, featuring three excellent scholars, will highlight the complexities and methodological challenges associated with the links between inequality and migration. We will consider, inter alia, the seminal case of the labour market gap between immigrants and natives, ask whether migration is intrinsically linked to inequality, and examine whether local populist responses to immigration can cause a polarization of political preferences and escalating spatial inequalities among and within countries.

Moderator:



Paweł Kaczmarczyk
(CMR UW)

Speakers:



Binod Khadria
(Jawaharlal Nehru
University)



Yajna Govind
(Copenhagen Business
School World Inequality
Lab)



Frédéric Docquier
(Luxembourg Institute
of Socio-Economic
Research LISER)



Inequalities and migration – in search of the answers

Tuesday, July 4th | 13:15 – 14:45 | main hall. 0.410

Inequalities intertwine with migration on the micro-, meso- and macro levels. Recent mobility-related debates have pointed to both inequalities as drivers of migration, as well as the impact migrations, have on inequalities in sending and receiving countries. Inequality-related challenges are discussed in the context of income, gender, ethnic and racial disparities, urban segregation, or labour market segmentation in receiving countries. This semi-plenary session is a space for in-depth reflection on the intersection of old and new inequalities and migration on a global and regional scale. Bringing examples from several countries, speakers will show the variety of perspectives we can take on the migration-inequality nexus and a variety of inequalities that are related to migration.

Moderator:



Dariusz Stola
(CMR UW; Institute of Political
Studies, Polish Academy of
Sciences)

Speakers:



Melissa Siegel
(Maastricht University)



Joanna Clifton-Sprigg
(University of Bath)



Jackline Wahba
(University of
Southampton)



Pei Chia-Lan
(National Taiwan
University)



Thomas Faist
(Bielefeld University)

Inequalities and knowledge production

Tuesday, July 4th | 13:15 – 14:45 | room no. 1.008

There has been a growing scholarly interest in power relations underlying knowledge production in migration studies in recent years. The power relations determine who gets to define the research agenda, the focus of the studies, who receives the research funding, who gets to theorise migration knowledge and who is excluded or marginalised in this process. Different factors, such as postcolonial and imperialist practices, shape the process. Consequently, migration studies have been criticised for producing inequalities by migrantising certain groups and focusing too often on the Western European & Northern American context.

This semi-plenary offers a broad view of the epistemological processes in migration studies, from the grant review to the dissemination of results and research impact. We will focus on the intersection of social inequalities and knowledge production in migration scholarship, provide insights on the topic from different disciplines, and give examples of various migrant populations and geographical perspectives. The panellists will analyse characteristics of the researchers that affect inequalities in knowledge production in migration studies (such as age, gender, race, ethnicity, migratory experience or lack thereof, North-South and West-East divide in the academia), discuss which groups migration studies choose as 'research objects' and talk about the groups that we, as researchers, fail to reach in disseminating our results. We will conclude by discussing the ways to make knowledge production in migration studies more inclusive.

Moderator:



Karolina Łukasiewicz
(CMR UW)



Agnieszka Radziwinowiczówna
(CMR UW)

Speakers:



Manuela Boatcă
(University of Freiburg)



Sari Hanafi
(American University of
Beirut)



Magdalena Kmak
(Åbo Akademi University)



Anna-Lisa Müller
(Bielefeld University)



Peter Scholten
(Erasmus University
Rotterdam)

Forced migration following the war in Ukraine and its implications for inequalities

Wednesday, July 5th | 13:15 – 14:45 | main hall. 0.410

Russia's attack on Ukraine on the 24th of February triggered the largest displacement in Europe's post WW2 history. Warfare and the arrival of forced migrants in Ukraine (IDPs), and European countries, including Poland, can trigger various medium- and long-term inequalities. This is conditioned by the legal status of the refugee population, their access to public services in the receiving societies, and the relationship between the old and new residents. This semi-plenary session will focus on the implications of Russia's full-scale aggression against Ukraine and the solutions to the international and internal displacement of people in Ukraine.

Moderators:



Olena Babakova
(Vistula University)



Anita Brzozowska
(CMR UW)

Speakers:



Agata Górny
(CMR UW)



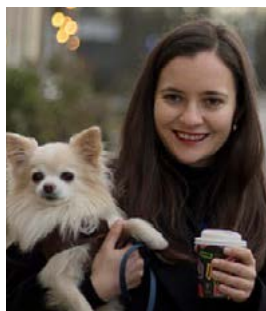
Olga Kupets
(Kyiv School of Economics)



Franck Duvell
(Institute for Migration
Research and
Intercultural Studies
(IMIS), Osnabrück
University; DeZIM)



Myra Keryk
(Ukrainian House
Foundation)



Maria Shaidrova
(University of Tilburg, NGO,
PhD Network)



Livia Styp-Rekowska
(IOM Poland)

Closing plenary:

Inequalities and migration – in search of solutions

Thursday, July 6th | 13:00 – 14:30 | main hall. 0.410

This closing plenary session will focus on diagnosing the current state of migration-related challenges embedded in the broader framework of inequalities. Our distinguished panellists will bring together global, regional and national perspectives from academia, international organisations and civil society organisations to identify and discuss possible solutions to the key challenges at the intersection of social and economic inequalities and migration. Main policy-oriented recommendations will be formulated.

Moderators:



Marta Pachocka
(CMR UW, SGH
Warsaw School of
Economics)



Izabela Grabowska
(Kozminski University)

Speakers:



Leiza Brumat
(European University
Institute)



Hein de Haas
(University of
Amsterdam)



**Szymon
Pogorzelski**
(EC)



**Jean-Christophe
Dumont**
(OECD)



Witold Klaus
(INP PAN, UW,
Consortium
of Civil Society
Organisations
working for migrants
and refugees)



Marie McAuliffe
(IOM)



Lucy Pedroza
(Center for
International
Studies of El Colegio
de México)

Side events:



Exhibition: “Pushback is illegal. Help is legal” – the exhibition was presented in the European Parliament in March 2023 with the aim of drawing international attention to the ongoing violation of human rights on the Polish – Belarusian border. The exhibition, organized on the initiative of Janina Ochojska, Member of the European Parliament and founder of the NGO Polish Humanitarian Action, includes photographs by Agnieszka Sadowska.

The exhibition will be on display at the conference venue (the Faculty of Modern Languages) during the IMISCOE conference.

July 3, 2023, Monday

16.30 – 17.30 – *Through the prism of collective action – on the role of projects at the intersection of art and social engagement in open centres for foreigners in Poland*

Panel mode: online



GROUP is a multilingual zine (grassroots publication) presenting a collection of fourteen individual experiences and stories of people detained in the centre for foreigners in Grupa near Grudziądz. During the meeting, we will describe the process and the idea behind the project. We will also be talking to three people staying at the centre about what was important to them during the process and what everyday life at the centre looks like. The aim of the project was to co – create and let the people who are usually talked about by others (often researchers, journalists or politicians), to narrate their own story, with their own voices and forms of expression – <https://grupa-zine.pl/>

Moderator:

Aleksander Grzybek cooperates with the Stocznia Foundation and carries out projects at the intersection of art and social engagement

Speakers:

Julija

Milka Dagova

Faig

16.30 – 17.30 – Humanitarian crisis at the Polish – Belarusian Border

Panel mode: hybrid | **venue:** University of Warsaw, the Faculty of Modern Languages | **room no.** 0.410

Since summer 2021, we have observed the severe violation of human rights and the right to asylum on the Polish – Belarusian border. During this meeting the invited guests will focus on the ongoing humanitarian crisis on the Polish Belarusian border, in the context of the exhibition “Pushbacks are illegal. Help is legal.” The meeting will give a chance to learn more about the reactions of the international community as well as the situation on the ground as seen and witnessed by people on the move, activists and researchers.

Moderator:

Kamila Fiałkowska CMR UW, Researchers on the Border

Speakers:

Janina Ochojska an activist and Member of the European Parliament, initiator of the exhibition Pushbacks are illegal. Help is legal; founder of an NGO Polish Humanitarian Action;

Jaafar Alasta a refugee who crossed the PL – BY border, lives in Poland;

Natalia Judzińska researcher and activist on the PL – BY border, documenting and researching visual aspects of the crisis, Holocaust scholar, co – founder of Researchers on the Border, Institute of Slavic Studies, Polish Academy of Sciences.

July 4, 2023, Tuesday

12.20 – 13.15 *Exploring the Far – Reaching Influence of Migration Studies: Insights from Four Esteemed Academic Journal Editors (Asian Pacific Viewpoint meeting)*

Panel mode: hybrid | **venue:** University of Warsaw, the Faculty of Modern Languages | **room no.** 1.162

In 2020 Steven Vertovec, in an article published by Comparative Migration Studies, argued that despite the successful institutionalisation process and new theoretical interventions, the field of migration studies seemed to have had low level of impact on public understanding. In light of this point, this panel organised by the journal Asia Pacific Viewpoint, invites four esteemed academic journal editors to discuss the challenges in achieving this important objective and what their journals do in order to promote broader impact.

Asia Pacific Viewpoint is a peer – reviewed journal that publishes academic research

within the social sciences, arts and humanities on the Asia Pacific. It promotes critical and creative approaches to area studies, and analyses that help to grasp the complex configurations of power that characterise this region across its various centres and peripheries.

In Asia Pacific Viewpoint, the Asia Pacific is not defined by specific geopolitical boundaries, but is shaped by the social, cultural, economic and political activities of its peoples, hence it is flexible, fluid, multiple, subjective and subjected to change.

12.20 – 12.40 ***“Everything you always wanted to know about Open Science* (*But were afraid to ask)”, meeting with Laura Morales, Sciences Po***

Panel mode: hybrid | **venue:** University of Warsaw, the Faculty of Modern Languages | **room no.** 1.172

Open Science sounds like a very dense acronym soup: FAIR principles, EOSC, RDA, DOIs, ORCID, API, Gold/Platinum OA, etc. All these acronyms and jargon can feel daunting but embracing Open Science is simpler than it seems, though it requires a bit of planning and thinking ahead. The goal of this session is to present the core principles that guide Open Science and to offer practical tips of how to go about engaging with Open Science on your everyday research activities. The session will leave enough time to Q&A focusing on participants’ needs and queries. Laura Morales will also be available at an Open Science stand in the publishers area Monday 3rd to Wednesday 5th for further Q&A.

18.45 – 19.45 ***“Re – enchanting the world” – Roma communities in Poland on the intersection of migration and art***

Panel mode: hybrid | **venue:** ZACHĘTA – National Gallery of Art (Malachowskiego Square 3, Cinema hall, 1st floor, entrance from Burschego Street)

This event will bring the audience to Zachęta – National Gallery of Art. The aim of the meeting is to discuss and touch upon intersections of Roma art, activism and research on Roma migration. During the event, the audience will watch the film produced for the Venice Biennale, followed by a discussion with the artist, Małgorzata Mirga – Tas and exhibition curator, focused around Roma and their representations in arts and culture including the history of inequalities, cultural appropriation, and epistemic violence towards marginalised communities.

“Re – enchanting the World” is founded on the concept of transnationality, cyclicity, and the re – appropriation of meanings. It proposes a fresh narrative that highlights the cultural migration of images and the mutual influences between Roma, Polish, and European cultures. Mirga – Tas integrates elements from the Palazzo Schifanoia frescoes,

but she transforms key motifs from European art history by incorporating representations of Polish – Roma culture, thus subverting stereotypical narratives. The exhibition takes inspiration from Silvia Federici's book "Re – enchanting the World: Feminism and the Politics of the Commons" (2019). Mirga – Tas embraces the notion of "re – enchantment" as a non – violent process that aims to transform the world's fortunes, dispel evil spells, and rebuild a sense of community and relationships with others.

Art of Małgorzata Mirga – Tas, a Polish Romani artist who represented Poland in a national pavilion at the Venice Biennale in 2023, presents Roma through their own eyes and in an emancipatory way protests colonial representations of Romani communities. The discussion will be followed by a guided tour of the exhibition.

Moderator:

Elżbieta Mirga-Wójtowicz, CMR UW

Speakers:

Małgorzata Mirga-Tas, artist

Joanna Warsza, curator



photo: Tytus Szabelski, Zachęta – National Gallery of Art archive

18.30 – 19.30 – *The other Stories Exhibition and Book Launch: A Discussion on Migration, Art and Living Together*

Panel mode: hybrid | **venue:** University of Warsaw, the Faculty of Modern Languages | **room no.** 1.162

After a decade in the Syrian civil war, mass migration and resettlement of Syrian refugees are still high on the political agendas of many countries. Turkey has become the most refugee – hosting country, which has raised the issues of possibilities of living together on various levels. Unfortunately, these possibilities are usually constructed with a dualistic understanding of the identities of immigrants and nationals. İstanbul Bilgi University (BİLGİ) hosted the exhibition titled “The Other Stories” to address the phenomenon of migration through its various dimensions. With this collaborative art project we invited 50 artists from Turkey and abroad to offer their contributions for an art exhibition on multidimensional and imbricated nature of human stories, revolving around human mobility. “The Other Stories” exhibition book both sustains the dialogue between art, migration and social cohesion, which we started with the “The Other Stories” exhibition and brings art and academia together in the context of migration. With the side event at IMISCOE conference, we plan to launch the exhibition book and organize a discussion with our artistic and academic collaborators on the themes of migration, art, and living together.

Moderator:

Gulay Ugur Goksel, İstanbul Bilgi University

Speakers:

Marco F.G. Martiniello, CEDEM

Denizhan Ozer - Curator

Serina Tara - Artist

Besim Can Zirh - Author

Saghar Daeeri Artist

Lale Duruiz - Artist

Asli Tunc - Author

Exhibition Website: <https://respondmigration.com/the-other-stories-exhibition>

Podcast-The Other Stories: Migration, Art and Living Together:

<https://open.spotify.com/show/2oJRGtROLUbQbEbeiDhad?si=d87c1c9ce24f454a>

The Other Stories Instagram: https://www.instagram.com/the_other_stories_book/

The Other Stories Exhibition Tour Video: <https://www.youtube.com/watch?v=i1ounz1cjko>

18.30 – 19.30 – *Ukrainian Women's Voices: Migrant Skills on the Labour Market and Gender Stereotypes*

Panel mode: hybrid | **venue** University of Warsaw, the Faculty of Modern Languages | **room no.** 1.110

After the Russian aggression against Ukraine on 24 Feb 2022, millions of Ukrainians were forced to leave their country and seek safety in the EU Member States. Many returned, yet many stayed for now. Due to the limitations imposed on men in working age due to the wartime in Ukraine, majority of incoming Ukrainian forced migrants are women. As existing evidence demonstrates, many of these Ukrainian women have higher education, yet they do not necessarily possess universalised skills. They used to work in country – specific sectors of the Ukrainian economy, which makes their adjustments to new labour market conditions challenging. They also face stereotypes related to the role of Ukrainian female migrants in the labour market.

This side event presents the perspective of migrant women, the challenges they face when trying to enter the labour market in the EU related to both gender and ethnic – related stereotypes. By giving the voice to migrant women and experts working in the field, we want to address several issues. First, migrants usually incur higher costs of entry into the labour market due to different barriers: structural, legal, cultural and others. In particular, migrants may experience deskilling, especially in the case of forced migration, where migration decisions do not result from long – term planning and preparations. When it comes to female migration, those costs are even higher as women usually need to accommodate both family care and work obligations. Second, there is much evidence that migrants enter the labour market via social networks that usually comprise other migrants. In those circumstances, migrants are often inclined to obtain jobs in migrant niches. Migrant niches are subject to strict gender selection (stricter than those operating in non – migrant sectors), which usually relegated them to a limited number of jobs, often in the feminised sector of domestic work. A specific trait of the domestic work sector is its informality and undeveloped system of skills recognition, especially in the case of care work, which also results in unfavourable working conditions and intransparent payment rules.

Moderator:

Marta Kindler, CMR UW

Speakers:

Marta Jaroszewicz – researcher, CMR UW

Marta Romankiv – artist, initiator of migrant care – workers union in Poland

Hanna Smaliychuk (mentor) and **Vita Korin** (participant) of the UW for Ukraine programme

Mariya Boguslav – director of EduHub – Network of Ukrainian Educational Hubs

Iuliia Lashchuk – researcher, EUI

Iryna Lapshyna – researcher, Institute for Migration Research and Intercultural Studies, Osnabrück University

July 4, 2023, Tuesday

20.15 – 23.00 – conference dinner and concert: Wernyhora

venue: Marble Hall, Palace of Culture and Science (1 Defilad Sq)

Wernyhora is a musical trio from Sanok (Poland) playing folk music with originates in the Carpathian borderland of Poland and Ukraine. Since 2020, the band has won



Adam Jaremk

a number of music awards at folk and world music festivals. Wernyhora has performed more than 50 concerts in Poland and abroad, and has released two albums, for which they received awards from the Polish Radio. In their explorations, Wernyhora reaches for the traditional songs of the Eastern Carpathians, identified with the musical folklore of the Boykos and Lemkos communities. Although the band is based on original melodies and lyrics of folk songs, it creatively develops them through the use of a unique instrumentation consisting of historical instruments. The latter, combined with the charismatic voice of the singer, creates an unusual and unprecedented combination.

Wernyhora concert not only highlights the contribution of minorities to the majority society's culture, but also reminds a wider audience of the culture and fate of the minority (mainly the Boyko) affected by state violence (forced deportation in 1947, Operation Vistula). In connection with the theme of the conference and the ongoing war in Ukraine, it is also important to stress the contribution of the Ukrainian minority living in Poland and their support for the forced migrants from Ukraine. The band's performance thus shows the multinational and multicultural mosaic of the borderland and the contribution of minorities to the social, cultural and political fabric of the country.

The band consists of:

- Daria Kosiek** a vocalist with a strong and distinctive voice, known both on the Polish folk and traditional music scene.
- Anna Oklejewicz** a multi – instrumentalist who plays Wernyhora on stringed instruments including violin, fiddle, rebek and viola da gamba.
- Maciej Harna** a multi – instrumentalist who plays the hurdy – gurdy in the band, as well as the drymba. In Wernyhora, he is responsible not only for playing the aforementioned instruments, but also for the elaboration and beautiful arrangements of the songs played by the band.



You can get acquainted with the band's music on the following websites:

https://soundcloud.com/wernyhora_sanok

https://open.spotify.com/artist/2ejvzwyMiTU8Fao0KAWet-T?si=ZfH_a_BpR2e5vXjhs2UA

July 5, 2023, Wednesday

18.30 – 20.00 – What happened on the ground? Practitioners' perspective on the response to forced migration from Ukraine to Polish cities

Panel mode: hybrid | **venue:** University of Warsaw, the Faculty of Modern Languages | **room no.** 0.410

This event aims at discussing on – the ground response of various public and private actors to the arrival of forced migrants from Ukraine to Polish cities in 2022. Following Russia's full – scale invasion of Ukraine and the largest in post WW2 history forced migration in Europe, Polish cities became at the forefront of everyday response. Polish local administration, social organizations, local communities, businesses, and ordinary residents faced an unprecedented challenge of addressing the

needs of the diverse group of new residents who fled the war in Ukraine. A year and a half later, we will reflect on how it worked out on the ground. How were the needs of various forced migrant populations, including Ukrainian Roma forced migrants, addressed? What challenges remained and appeared over the time? How did various public and private actors cope with the challenges? What programming opportunities were created and utilized following the response crisis? Five excellent speakers and practitioners representing local administration of capital city of Warsaw, social organizations and businesses will participate in this panel discussion and answer the questions.



Warsaw Train station, March 14th, 2022, Photos by Dominik Wach, CMR

Moderators:

Karolina Łukasiewicz, CMR, UW;

Sarian Jarosz, Migration Consortium

Speakers:

Joanna Sosnowska City Hall of Warsaw

Joanna Warchal Benasch, NGO Forum “Together” in Poland in 2022, Polish Humanitarian Action

Lila Kalinowska Dom Ukraiński in Przemyśl

Karol Kwiatkowski Centralna Rada Romów w Polsce

Anita Ryng IKEA

19.00 – 20.20 – Documentary screening Arkadaşloch – Nobody's Problem

Panel mode: onsite | **venue:** ZACHĘTA – National Gallery of Art (Zachęta – National Gallery of Art Malachowskiego Square 3, Warsaw, Cinema hall, 1st floor, entrance from Burschego Street)



"Arkadaşloch – Nobody's Problem" is an ethnographic documentary film which tells the story of Özi who was deported from Germany to Turkey. How could a convicted criminal in Germany become a decent business owner in Antalya? Dr. Nilay Kılınç takes us to the tourist hub of Turkey and offers a closer look at the lives of the second – generation Turkish – German 'returnees' who had experienced various struggles growing up in Germany and now trying to live a better life in Antalya.

Info

Release Year: 2022

Length: 78 minutes

Languages: Turkish, German, English

Subtitles: English

Awards: "Best Feature Film" award by Cinesquare South East European Film Festival 2023

Credits

Director: Nilay Kılınç

Co – Directors: Markus Bauer / Alexander Brugger Script and Narration: Nilay Kılınç

Producer: LM.Media GmbH

Cinematography: Alexander Brugger / Andreas Wolfger

Editing: Markus Bauer **Music:** Martin Engler / Cem Karaca

3 pm: onsite guided tours, POLIN & ZACHĘTA

Dear conference participants,

We will soon be meeting in Warsaw – in addition to the conference, we would like to invite you to explore the city's cultural offerings and to plan your time after the official end of the conference. Perhaps some of you have decided to stay longer in Warsaw, if so we hope this will be of interest to you.

We offer you the possibility of organising a group visit to two museums:

Museum of the History of Polish Jews – POLIN and its impressive Core Exhibition (max. number of participants – 50)

The Core Exhibition is a journey through 1000 years of Polish Jewish history – from the Middle Ages to the present day. Visitors will find answers to questions such as: How did Jews come to Poland? How did Poland become the centre of the Jewish Diaspora and home to the largest Jewish community in the world? How did it cease to be so, and how is Jewish life being revived?

Zachęta – National Art Gallery (max. number of participants – 50)

Viewing of the exhibition “Re – enchanting the World”, first presented at the Venice Biennale in the Polish Pavilion. It was the first time in the 120 – year history of the Venice Biennale that a national pavilion was represented by a Roma artist. The exhibition by Małgorzata Mirga – Tas, a Polish Roma visual artist, is based on the idea of transnationality, cyclicity and the transformation of appropriated meanings, proposing a new narrative about the constant cultural migration of images and mutual influences between Roma, Polish and European cultures. Małgorzata Mirga – Tas uses images from the Palazzo Schifanoia, but transforms key motifs from European art history, inserting representations of Polish – Roma culture and reversing the stereotypical narrative.

Małgorzata Mirga – Tas is a Polish – Roma artist and activist. Her work addresses issues of anti – Roma stereotypes and creates an affirmative iconography of Roma communities. She graduated from the Faculty of Sculpture at the Academy of Fine Arts in Warsaw.

Both tours will take place on 6 July at 3^{pm}. Please arrive at your chosen museum on time. For logistical reasons, please complete the registration form for your chosen tour by 28 June. For further information, please contact k.fialkowska@uw.edu.pl

Detailed program

Monday, 3 July, 13:00-14:30

Session Number	Panel Title	Panel Mode	Onsite Room Number
1	Futures within transnational spaces: Displaced Ukrainian migrants' agency between return and settlement	<i>Onsite</i>	2 118
2	Visual Methodologies in Migration Research. How inequalities are being (re-)produced in the image production about migration	<i>Hybrid</i>	3 110
3	Educational attainment and discrimination	<i>Onsite</i>	1 110
4	Transnational families' digital social practices and social inequalities	<i>Hybrid</i>	2 130
5	Knowledge politics: Scholarship and 'evidence' in the dangerous politics of migration	<i>Onsite</i>	1 158
6	Book launch and Workshop- Migration and Domestic Space: Ethnographies of Home in the Making (Eds. Bocagni P., Bonfanti S.) Springer, IMISCOE Research Series, 2023.	<i>Hybrid</i>	2 116
7	Discrimination and Inequalities: Racialization Processes in Europe	<i>Hybrid</i>	3 128
8	Migrants' Perceptions of Economic Inequality, Class, and Social Mobility	<i>Onsite</i>	1 162
9	Migration narratives in a world of inequalities (Part 1)	<i>Onsite</i>	2 136
10	Gendered im/mobilities, resilience and renewal during pandemic: Combating the inequality effects on migrantized women and their families	<i>Hybrid</i>	3 212
11	Care and harm in the production of knowledge on migration	<i>Hybrid</i>	1 128
12	Crises as distractions from structural inequalities inherent in migration	<i>Hybrid</i>	1 152
13	Ambiguous inclusion: Policies and governance mechanisms against the digital exploitation of migrant workers	<i>Hybrid</i>	1 163
14	Local-level migration policymaking in a crisis context (Part 1). Central European experiences	<i>Onsite</i>	1 167
15	The COVID-19 pandemic and its consequences for migrants and for policies	<i>Onsite</i>	1 008
16	Migrant Political Engagement and Integration	<i>Onsite</i>	2 014
17	Towards diverse societies: New approaches	<i>Onsite</i>	3 017
18	Data on Irregular Migration and the Politics of (In)Visibility and Categorisation	<i>Onsite</i>	3 045
19	Diaspora Formation and Racism	<i>Onsite</i>	3 019
20	Homeownership and Inequalities in a Transnational Perspective	<i>Online</i>	NA
21	Building spaces of conviviality and well-being in an unequal world	<i>Online</i>	NA

22	Cross-Border and Beyond-Border Policies	<i>Online</i>	NA
23	Migration and transnational social protection	<i>Online</i>	NA
24	Highly educated migrants and the obstacles to find their appropriate place in the labour market	<i>Online</i>	NA
25	Strategies of migrants to overcome barriers for entrance to the labour market	<i>Online</i>	NA
26	Migration and health	<i>Online</i>	NA

Monday, 3 July, 14:50-16:20

Session Number	Panel Title	Panel Mode	Onsite Room Number
27	Forced migration: Understanding policies, effects, and refugees' experiences	<i>Onsite</i>	2 118
28	Revisiting the 'new destination' debate in Europe: Comparing South-North and East -West mobility routes	<i>Onsite</i>	3 110
29	Transnational Family Dynamics in Europe	<i>Onsite</i>	1 110
30	The migrant researcher? Reflections on academic selves, inequalities and epistemologies in migration studies	<i>Onsite</i>	2 130
31	Towards a Novel Mobility Regime? The Legacies of the COVID-19 Pandemic Regarding the Governance of Human Movement	<i>Onsite</i>	1 158
32	Research methods for forced migration research	<i>Hybrid</i>	2 116
33	Defining and assessing "good" migration governance	<i>Onsite</i>	3 150
34	Tackling Racism in sport: Finding Solutions through an Academic-CSOs dialogue	<i>onsite</i>	1 162
35	An intersectional reading of migration in remote and peripheral European regions. In-between spatial inequality and actors inequalities	<i>Onsite</i>	2 136
36	Essential but excluded: Surviving precarity in essential economic sectors during and after the pandemic	<i>Hybrid</i>	3 212
37	Inclusion, exclusion, and migrants' social protection	<i>Hybrid</i>	1 128
38	Experiences, well-being and aspirations of young (potential) migrants	<i>Onsite</i>	1 152
39	Intersectionality and Boundary Work: Refugees, Returnees and Families in War and Conflict	<i>Hybrid</i>	1 163
40	Sexual and Gender-based Violence from Displacement to Refuge: Conceptualising Violence, Harm and Forced Migrant Resistance	<i>Hybrid</i>	1 167
41	Faith in migration: Shaping coordinates of space, time and movement	<i>Onsite</i>	1 008
42	Processes of exclusion and inclusion of highly skilled migrants	<i>Onsite</i>	2 014
43	Old and new patterns and methods in national migration governance	<i>Onsite</i>	3 017

44	Employment and Integration Barriers Facing Skilled Migrants in Canada	Onsite	3 045
45	Migration and the Platform Economy (Part 1)	Online	NA
46	Negotiating boundaries in and through culture	Online	NA
47	Inequality, insecurity and working conditions: The level of work organisations	Online	NA
48	Return migration and transnationalism	Online	NA
49	The role of societies and crises in shaping transnational migration and migrants' experiences	Online	NA
50	Migrants' social capital, ties, and networks	Online	NA

Tuesday, 4 July, 9:00-10:30

Session Number	Panel Title	Panel Mode	Onsite Room Number
51	Minorities-migrants-refugees and transnational mobilization in the face of the war in Ukraine	Onsite	2 118
52	The Multilevel Governance of Immigrant Integration and Inequalities: Current Challenges and Future Agenda	Onsite	3 110
53	Discrimination and inequalities: The role of policies and gatekeepers	Onsite	1 110
54	Reception of Ukrainian Refugees in Europe under the Temporary Protection Directive – a case of conditional (and temporary) solidarity?	Onsite	2 130
55	Moral gatekeeping in the migration regime: family norms and imaginaries of intimacy (Part 1)	Onsite	1 158
56	Inequalities as a result of governance practices	Onsite	2 116
57	MIDEQ South-South Migration for Equality and Development (Part 1): Complex Transnational and Regional (In)equalities in the Global South	Hybrid	3 128
58	Intersectional Im/possibilities: Understanding Settlement and Onward Migration Practices	Onsite	1 162
59	Current Topics in Migration Studies from a Student Perspective: The EuMIGS Double Degree Master Theses (Part 1)	Hybrid	2 136
60	Migration and LGBTQI+ experiences – revisiting settlement strategies and experiences	Onsite	3 212
61	Female migrants and the role of remoteness for reinforcing or mitigating gender inequalities	Hybrid	1 128
62	Reimagining Transnational and Internal Chinese Migration: Transformation, Identity and New Dynamics	Hybrid	1 152
63	Gendered migrations in the Global South: Inequalities and neglected intersections	Hybrid	1 163
64	Migration and inequalities in the UK borderscape: Between imaginaries and practices	Hybrid	1 167
65	"Just Europeans": Individual and Collective Citizenship Practices of Young People of Migrant Heritage in Europe	Hybrid	1 172
66	Local-Level Migration Policymaking in a Crisis Context (Part 2). Western European Experiences	Onsite	1 008

67	Migration politics, attitudes and social consequences	<i>Onsite</i>	2 014
68	Durable Solutions for Irregularized Humanitarian Migrants? Part 1: Policy and Practice	<i>Onsite</i>	3 017
69	Emigration and diaspora governance	<i>Onsite</i>	3 019
70	Activism and Migration in the Mediterranean	<i>Online</i>	NA
71	Intersectional perspectives on vulnerability and support	<i>Online</i>	NA
72	Ukrainian refugees and their integration in labour markets in Europe	<i>Online</i>	NA
73	Rethinking Migration Pathways and Trajectories	<i>Online</i>	NA
74	Sustainable food and cultural diversity: Discourses and practices. Part 1: Migrants' knowledge	<i>Online</i>	NA
75	Transitions to work/employment through migration	<i>Online</i>	NA
76	National migration governance	<i>Online</i>	NA

Tuesday, 4 July, 10:50-12:20

Session Number	Panel Title	Panel Mode	Onsite Room Number
77	Processes of integration in the labour market and the working of support programmes	<i>Onsite</i>	2 118
78	Rethinking Migration Studies for 2050	<i>Onsite</i>	3 110
79	Synergies between H2020 research projects on 'local integration'	<i>Hybrid</i>	1 110
80	Drivers of discrimination and racism – Taking stock of the evidence on discrimination and racism across settings: meta-analysis and scoping reviews	<i>Onsite</i>	2 130
81	Moral gatekeeping in the migration regime: family norms and imaginaries of intimacy (Part 2)	<i>Onsite</i>	1 158
82	Enforced returns and alternatives to return in Europe: Plans and preliminary findings of the FAiR Horizon Europe project	<i>Onsite</i>	2 116
83	MIDEQ South-South Migration for Equality and Development (Part 2): Transnational and Multidimensional Migrants' Lives in Asia and beyond	<i>Hybrid</i>	3 128
84	Inequalities in Arts and Culture: Structural Factors and Processes of Change	<i>Hybrid</i>	1 162
85	Migration narratives in a world of inequalities (Part 2)	<i>Onsite</i>	2 136
86	The death of asylum?: Examining British state responses to asylum migration in an age of deterrence	<i>Onsite</i>	3 212
87	Migrants making space for religion: Identities, rituals and popular culture	<i>Onsite</i>	1 128
88	European border regimes and migration in Africa	<i>Onsite</i>	1 152
89	Between migration aspirations and (im)mobility patterns	<i>Hybrid</i>	1 163
90	Critical perspectives on the criminalization of migrant solidarity	<i>Hybrid</i>	1 167

91	"Just Europeans": Unequal Experiences of Identification and Belonging among Young People of Migrant Heritage in Southern Europe	<i>Hybrid</i>	1 172
92	Ukrainian migrants / refugees	<i>Onsite</i>	2 014
93	Never fully in, never really out? Contesting and legitimizing boundaries of in- and exclusion in migration and asylum contexts	<i>Onsite</i>	3 017
94	Rethinking migrant access to social protection	<i>Onsite</i>	3 045
95	New data and measurements on migration	<i>Onsite</i>	3 019
96	Transnational education at the micro and meso level. Actors, inequalities, and networks among migrants in Germany	<i>Online</i>	NA
97	Refugees' experiences of displacement and settlement	<i>Online</i>	NA
98	EU and national refugee governance	<i>Online</i>	NA
99	Qualitative and mixed approaches in research on refugees	<i>Online</i>	NA
100	Vulnerabilities among older migrants	<i>Online</i>	NA
101	The (non-)working of labour market integration policies and programmes for migrants and refugees	<i>Online</i>	NA

Tuesday, 4 July, 14:50-16:20

Session Number	Panel Title	Panel Mode	Onsite Room Number
102	Do Inequalities Drive Migration Aspirations?	<i>Onsite</i>	2 118
103	The practice of reflexivities in research	<i>Hybrid</i>	3 110
104	Forced Migration in and beyond Europe – State-of-the-art and future directions of scholarship	<i>Onsite</i>	1 110
105	Discrimination and inequalities: Defining discrimination, perceptions and expectations	<i>Onsite</i>	2 130
106	Attitudes towards Newcomers: Evidence from Various Cultural Contexts	<i>Onsite</i>	1 158
107	Cities and urban migration governance practices	<i>Onsite</i>	2 116
108	Emerging approaches to qualitative migration research	<i>Onsite</i>	3 128
109	Migration, diversity and social cohesion: Authors meet critics	<i>Onsite</i>	1 162
110	Current Topics in Migration Studies from a Student Perspective: The EuMIGS Double Degree Master Theses (Part 2)	<i>Hybrid</i>	2 136
111	(Intangible) Remittances and Inequality: A Blank Spot on the 'Research Map' (Part 1)	<i>Hybrid</i>	3 212
112	Migrants' Social Inclusion, Access to Social Policies and Inequalities in Europe: Policies, Actors and Attitudes (Part 1)	<i>Hybrid</i>	1 128
113	Diversities in ageing and migration configurations	<i>Onsite</i>	1 152

114	Towards a Genealogy of Migrant Solidarities: Tracing Postsocialist-Postcolonial Encounters in Diasporic Spaces	<i>Onsite</i>	1 163
115	Gender perspectives on displacement and conflict settings	<i>Hybrid</i>	1 167
116	Rethinking family through transnational practices	<i>Onsite</i>	1 172
117	European externalisation policy and bordering practices (Part 1)	<i>Onsite</i>	1 008
118	Integration policies: frameworks and practices	<i>Onsite</i>	3 017
119	Reflexivity in Research on Racial/Ethnic/Cultural Socialization with Immigrant and Non-Immigrant Participants in Germany	<i>Onsite</i>	3 045
120	Migration and the Platform Economy (Part 2)	<i>Onsite</i>	3 019
121	Beyond the State: Transnational Solidarities in Response to the Ukrainian Refugee Crisis in Europe	<i>Online</i>	NA
122	The significance of family formations and relationships for migration and settlement	<i>Online</i>	NA
123	Stakeholders and actors in the labour market in relation to migrant workers	<i>Online</i>	NA
124	Qualitative research on migration - issues and challenges	<i>Online</i>	NA
125	Sustainable food and cultural diversity: Discourses and practices. Part 2: Comparing cultures	<i>Online</i>	NA
126	The role of local government and civil society in migration governance	<i>Online</i>	NA
127	Migrants' local and transnational political participation	<i>Online</i>	NA

Tuesday, 4 July, 16:40-18:10

Session Number	Panel Title	Panel Mode	Onsite Room Number
128	Discrimination and inequalities: Personal experiences of discrimination and exclusion	<i>Onsite</i>	2 118
129	Beyond MLG: how levels and actors entangle policy logics and interact in immigrant policy practice- Part 1: Local vs. National	<i>Onsite</i>	3 110
130	Transnational connections amid existential circumstances	<i>Onsite</i>	1 110
131	Ukrainian diaspora's role in the reconstruction and development of Ukraine	<i>Onsite</i>	2 130
132	Temporary protection? Nation states' regulations vs EU legislation towards asylum-seekers	<i>Onsite</i>	1 158
133	Inequalities for labour migrants in the food supply chain industries: Conditions, rights and regulatory infrastructures	<i>Onsite</i>	2 116
134	Public attitudes towards migration	<i>Hybrid</i>	3 128

135	Legal Pathways to Europe as Solutions to Protracted Displacement: Between Protection Tools and Migration Control Mechanisms	<i>Hybrid</i>	1 162
136	The role of regions in migration governance	<i>Hybrid</i>	2 136
137	(Intangible) Remittances and Inequality: A Blank Spot on the 'Research Map' (Part 2)	<i>Hybrid</i>	3 212
138	Migrants' Social Inclusion, Access to Social Policies and Inequalities in Europe: Policies, Actors and Attitudes (Part 2)	<i>Hybrid</i>	1 128
139	The labour integration of Southern European workers in the EU: Migration strategies, labour stratification, and life cycle	<i>Onsite</i>	1 152
140	Precarious Migrants and Intersectional Approaches to Exclusion	<i>Onsite</i>	1 163
141	Migrant Women Musicians: From Gendered Differentiations to Multisource Inequalities	<i>Onsite</i>	1 167
142	Historicizing Mediterranean Migration Research: The Role of Memory and Historical Narrative	<i>Hybrid</i>	1 172
143	European externalisation policy and bordering practices (Part 2)	<i>Onsite</i>	1 008
144	Institutions, educational opportunities and in/exclusion	<i>Onsite</i>	2 014
145	Methods, methodologies and positionality in reflexive migration studies	<i>Onsite</i>	3 045
146	Capital and employers framing "good" migration and shaping mobility	<i>Onsite</i>	3 019
147	Perpetuation and transmission of racist discriminatory thought patterns in teacher education	<i>Online</i>	NA
148	Middle-class female migration. Aspirations and lived experiences	<i>Online</i>	NA
149	European externalisation and border policies	<i>Online</i>	NA
150	Privileged mobilities and emigration from wealthy countries	<i>Online</i>	NA
151	A reflexive perspective on borders, bordering practices and border narratives	<i>Online</i>	NA
152	Ageing in migration	<i>Online</i>	NA
153	Working with various migration data	<i>Online</i>	NA

Wednesday, 5 July, 9:00-10:30

Session Number	Panel Title	Panel Mode	Onsite Room Number
154	The production of irregular living and working conditions for migrants and racialized communities in Europe (Part 1)	<i>Onsite</i>	2 118
155	Critical perspectives on university education – an anti-racist and decolonial approach	<i>Hybrid</i>	3 110
156	Beyond MLG: how levels and actors entangle policy logics and interact in immigrant policy practice- Part 2: Local battlegrounds	<i>Onsite</i>	1 110
157	Undocumented migrants and negotiations of urban citizenship in Europe	<i>Onsite</i>	2 130

158	Reaching Out to Close the Border: Understanding Mobilization against Migration across Europe (Part 1)	Onsite	1 158
159	New Ukrainian, Belarusian and Russian Diasporas: From Exodus to Local Development and Post-War Recovery?	Hybrid	2 116
160	Resistance and solidarity: Migrants' digital practices and social inequalities	Hybrid	3 128
161	Reconstructing migration governance theory in the Global South: from hegemonic ideals to empirical realities (Part 1)	Hybrid	1 162
162	(Forced) Migration Governance Making States	Onsite	2 136
163	The Political Representation and Participation of Migrants	Hybrid	3 212
164	Attracting "desirable" migrants: definition, prospection and promotion of privileged mobilities- Part 1- The definition of "desirable" migrants by state and non-state actors	Hybrid	1 128
165	Demographic diversity and dynamics of inequalities	Hybrid	1 152
166	Migration and religion	Hybrid	1 163
167	Transactional sex in forced migration	Hybrid	1 167
168	A reflexive perspective on knowledge production, categories and meaning-making	Hybrid	1 172
169	Multidirectional Boundary-Work: Struggles, resistances and justifications	Onsite	1 008
170	Dealing with 'integration' from a reflexive perspective	Onsite	2 014
171	Technology facilitated trafficking and other forms of online exploitation – Analysis from a legal, social and governance perspective	Onsite	3 017
172	Return migration and embedding in light of Brexit	Onsite	3 045
173	Durable Solutions for Irregularized Migrants? Part 2: Resistance and Resilience	Onsite	3 019
174	Diasporic Youth Politics and Mobilisation	Online	NA
175	Gender perspectives on transnational mobilities and diasporic connections	Online	NA
176	Migrants, rights and welfare	Online	NA
177	Integration and inequalities: from lived experiences to media discourses	Online	NA
178	Beyond «absence». Rediscovering Sayad's approach for the study of migration-related inequalities / Otherness (Part 1)	Online	NA
179	International student mobility and migrants in higher education (Part 1): Structural and formal aspects	Online	NA
180	COVID-19 and (temporary labour) migration	Online	NA
202	Beyond «absence». Rediscovering Sayad's approach for the study of migration-related inequalities/ Migrants' trajectories (Part 2)	Online	NA
203	International student mobility and migrants in higher education (Part 2): Lived experiences	Online	NA

Wednesday, 5 July, 10:50-12:20

Session Number	Panel Title	Panel Mode	Onsite Room Number
181	"Enhancing EU migration governance"? Reflections on the research-policy nexus in the context of Horizon Europe-funded research on irregular migration	<i>Onsite</i>	2 118
182	Racism, anti-racism and decolonization of Higher Education: Students and academics' experiences	<i>Onsite</i>	3 110
183	Future directions in research around gender-based violence and sexual abuse in migration contexts	<i>Onsite</i>	1 110
184	Documentaries: Possibilities and Limits as a Method of Empowerment and Knowledge Dissemination on Forced Migration	<i>Hybrid</i>	2 130
185	Reaching Out to Close the Border: Understanding Mobilization against Migration across Europe (Part 2)	<i>Hybrid</i>	1 158
186	Beyond MLG: how levels and actors entangle policy logics and interact in immigrant policy practice- Part 3: Reception of Ukrainians	<i>Onsite</i>	2 116
187	New mobilities in post-Soviet space after the outbreak of the war in Ukraine	<i>Hybrid</i>	3 128
188	Reconstructing migration governance theory in the Global South: from hegemonic ideals to empirical realities (Part 2)	<i>Onsite</i>	1 162
189	Migration and the arts: Postmigrant, diasporic and de-centred perspectives	<i>Onsite</i>	3 212
190	Attracting "desirable" migrants: definition, prospection and promotion of privileged mobilities- Part 2: Prospection and attraction devices for privileged immigration	<i>Onsite</i>	1 128
191	The NEW ABC project: Co-creating solutions with children/youth with a migrant background to overcome educational and social inequalities	<i>Onsite</i>	1 152
192	Leaving, staying, returning? The role of the media narratives and discourses in the relationship between migrations and shrinking areas	<i>Hybrid</i>	1 163
193	Boundaries from Above and Below: Strategies and Responses to Stigma and Discrimination	<i>Onsite</i>	1 008
194	Migrant Inclusion and Integration Policies and Policy-making	<i>Onsite</i>	2 014
195	Diaspora engagement and transforming localities in Eastern and Southern Europe	<i>Onsite</i>	3 017
196	Revisiting Paths to Citizenship and Naturalization	<i>Onsite</i>	3 045
197	Dynamics of protection and security at the border	<i>Onsite</i>	3 019
198	Challenges and strategies for the dynamic integration of refugee and migrant children: Insights and reflections from the H2020 REFUGE-ED project in Bulgaria, Italy and Spain	<i>Online</i>	NA
199	Migration frameworks: Judicial biases and gendered experiences	<i>Online</i>	NA
200	Bureaucracy and migration governance	<i>Online</i>	NA
201	Queer refugees	<i>Online</i>	NA

Session Number	Panel Title	Panel Mode	Onsite Room Number
204	Youth perspectives: Belonging and exclusion in transnational spaces	<i>Onsite</i>	2 118
205	Global East, post-colonialism and subaltern empires: Addressing some blind spots in migration and refugee studies and the way forward	<i>Onsite</i>	3 110
206	The formation of aspirations in transnational spaces	<i>Onsite</i>	1 110
207	Diaspora Mobilization and Homeland Politics	<i>Hybrid</i>	2 130
208	More than a desk in a classroom: Migrant children and educational inequalities	<i>Onsite</i>	1 158
209	Participatory research methods in migration studies: Transcending inequalities and exploring potentialities of knowledge co-production	<i>Onsite</i>	2 116
210	Multisensorial research, migrations and inequalities – exploring new methodological pathways	<i>Onsite</i>	3 128
211	Alternative modes of knowledge production in migration studies: Multimedia storytelling as a way of decolonising research	<i>Onsite</i>	1 162
212	The implications of unequal treatment of protection seekers in the European Union	<i>Onsite</i>	2 136
213	Immigrant integration, social participation and inequalities	<i>Onsite</i>	3 212
214	Cross-border labour mobility in Europe: Uneven developments, crisis and spatial division of labour	<i>Onsite</i>	1 128
215	Provincializing perspectives from the 'West': Citizenship, race and class in migration-led inequalities in Asia and the Gulf	<i>Hybrid</i>	1 152
216	Posting of workers in the EU and inequalities	<i>Onsite</i>	1 163
217	Deskilling versus Inclusion of Female Migrants and Refugees - Insights from and for Ukrainian Women	<i>Hybrid</i>	1 167
218	Counter-Futures: Transnational Labour Regime and Mobile Workers' Struggles for Better Futures	<i>Onsite</i>	1 008
219	Methodological options for assessing migration before and during the Russian aggression against Ukraine	<i>Onsite</i>	2 014
220	International student mobility to "off-beat" destinations	<i>Onsite</i>	3 017
221	Migrant organizations, civil society, and place-making: Addressing inequalities in superdiverse areas	<i>Onsite</i>	3 045
222	The nexus of refugee integration and social policies	<i>Onsite</i>	3 019
223	The Experiences of Stigma and Coping among Marginalised Students in Southeast Asian Countries	<i>Online</i>	NA
224	Re-thinking the experiences of migrant children and youth	<i>Online</i>	NA
225	Climate and environmental migration and governance	<i>Online</i>	NA
226	Gender perspectives on labour migration	<i>Online</i>	NA
227	Migrant Political Participation in Europe	<i>Online</i>	NA
228	The platform economy for (irregular) migrants: A curse, a last chance, or both?	<i>Online</i>	NA

Wednesday, 5 July, 16:40-18:10

Session Number	Panel Title	Panel Mode	Onsite Room Number
229	Forced migration: Policy frameworks and refugee practices	Onsite	2 118
230	Discrimination and inequalities: Experimental research on drivers and moderators of discrimination	Onsite	3 110
231	Reflections on social class, inequality and mobility from a transnational perspective	Onsite	1 110
232	Doing Migration in Authoritarian and Nondemocratic Settings: Biopolitics, Othering and the Black Box of Knowledge Production	Onsite	2 130
233	A never-ending crisis? Understanding international student mobility/migration in the framework of 'unsettling events'	Hybrid	1 158
234	Convivial feminist methodology in migration and mobility studies: Exploring decolonial and creative ways of knowledge co-production	Onsite	2 116
235	What to tackle (first)? Multiple inequalities within the housing-integration nexus	Hybrid	3 128
236	Middle-aged migrants. Who cares?	Hybrid	1 162
237	Immigrants, self-employment and entrepreneurship	Hybrid	2 136
238	Interdisciplinary perspectives on inequalities in intra-European East-West migration	Onsite	3 212
239	Leisure, nature and outdoor space in facilitating migrants' inclusion and belonging	Onsite	1 128
240	Debates on "Human trafficking" and practices of coercive labor exploitation: Critical review of local and international perspectives	Onsite	1 152
241	Exploring the legal facets of immigration and migrants' rights	Hybrid	1 163
242	Migration and agriculture in the XXI century	Onsite	1 167
243	Unpacking the nexus between refugee sponsorship and integration: insights from Canada and Europe	Onsite	1 008
244	Migrant Transnational Participation and Political Representation	Onsite	2 014
245	Migrants' participation right in Small and Medium-sized Towns (SMTs). Constraints, challenges, opportunities	Onsite	3 017
246	Precarity and inequalities among female migrants	Onsite	3 045
247	Topics and challenges in qualitative and mixed methods research on migration and refuge	Onsite	3 019
248	From theory to practice: Fostering migrant children rights to education. A comparison among countries in a learning-by-sharing perspective	Online	NA
249	Methods, methodologies and reflexivity	Online	NA

250	Migration governance in the 'Global South'	<i>Online</i>	NA
251	Migrant Enfranchisement and Political Participation	<i>Online</i>	NA
252	The role of education for (intergenerational) social mobility and inclusion	<i>Online</i>	NA
253	Sources of labour market inequalities for migrants	<i>Online</i>	NA

Thursday, 6 July, 9:00-10:30

Session Number	Panel Title	Panel Mode	Onsite Room Number
254	The production of irregular living and working conditions for migrants and racialized communities in Europe (Part 2)	<i>Onsite</i>	2 118
255	Social inequalities stemming from persistent migrant integration obstacles across Europe: The case of young migrants in vulnerable conditions	<i>Hybrid</i>	3 110
256	The construction of cultural inequalities in research with migrant families and youth	<i>Hybrid</i>	1 110
257	Methodological Challenges in Studies of Forced Migration and War Refugees from Ukraine to Europe	<i>Onsite</i>	2 130
258	Migration and social mobility: Processes and dynamics in Africa, Asia and South America	<i>Hybrid</i>	1 158
259	Exploring Inequalities Based on the Book "Forced Migration and Separated Families: Everyday Insecurities and Transnational Strategies"	<i>Hybrid</i>	2 116
260	Emigrant Policies: The Emergence of Global Patterns?	<i>Hybrid</i>	3 128
261	Falling through the net – Evaluating the unequal access to social security for immigrants with precarious or temporary status	<i>Onsite</i>	1 162
262	Topics and challenges in quantitative research on migration and refuge	<i>Hybrid</i>	2 136
263	Researching Gender and Academic Mobility in Neo-liberal Academia	<i>Onsite</i>	3 212
264	Migration and Employment: Interdisciplinary Perspectives	<i>Hybrid</i>	1 128
265	Migration and LGBTQI+ experiences - Revisiting right-wing politics and queer migration	<i>Onsite</i>	1 152
266	Problematising gender and sexuality norms, ideals, identities	<i>Onsite</i>	1 163
267	Forced migration: refugees' experiences and new forms of care	<i>Hybrid</i>	1 167
268	Informal solidarity initiatives based on intercultural contact between refugees and locals	<i>Onsite</i>	1 008
269	Developments in national migration governance and policy	<i>Onsite</i>	2 014
270	The role of local actors and places in shaping migrant arrival: Arrival infrastructures in European arrival areas	<i>Onsite</i>	3 017
271	Refugee education	<i>Onsite</i>	3 045

272	Migration, rights and welfare	<i>Onsite</i>	3 019
273	Between exploitation and exclusion: The zero-sum game of migration for foreign workers	<i>Online</i>	NA
274	Knowledge production through reflexive migration studies	<i>Online</i>	NA
275	Transnational migration in the digital era: new forms of solidarities, co-presence and identities	<i>Online</i>	NA
276	Exploring habitability in socio-ecological systems: How local environmental changes contribute to global transformations	<i>Online</i>	NA
277	Citizenship and Naturalization Regimes	<i>Online</i>	NA
278	Governance of the movement, reception and integration of Ukrainian refugees	<i>Online</i>	NA
279	Determinants, experiences, and outcomes of social inequalities in international student mobility in the wake of the Covid-19 pandemic	<i>Online</i>	NA

Thursday, 6 July, 10:50-12:20

Session Number	Panel Title	Panel Mode	Onsite Room Number
280	Migrants and the welfare state: Employment and social security as right or merit?	<i>Hybrid</i>	2 118
281	Dealing with migration and asylum uncertainty across time horizons: Perspectives for policy support	<i>Onsite</i>	3 110
282	International student mobility: Actors, institutions, experiences	<i>Hybrid</i>	1 110
283	Complexities of mobility and fixity in arrival contexts: Reflections from research in five countries	<i>Onsite</i>	2 130
284	Celebratory Migrantization? Questioning the Histories and Practices of Racialization in the Arts	<i>Onsite</i>	1 158
285	Organising care in transnational families in Europe: Actors, practices and challenges for well-being and equality in the (post)Covid-19 era	<i>Hybrid</i>	2 116
286	Processes of Returnees' Reintegration from a Comparative Perspective	<i>Hybrid</i>	3 128
287	Unequal temporalities and temporal inequalities of citizenship and migration: new avenues to researching time, (im)mobility and power	<i>Hybrid</i>	1 162
288	Experiences of Critical Methodologies: Challenging Core Concepts in Migration Studies	<i>Hybrid</i>	2 136
289	Migration and LGBTQI+ experiences – revisiting 'sexual migration'	<i>Onsite</i>	3 212
290	Boundary spanners: Reflexive practices that unsettle bordering in migration (studies)	<i>Hybrid</i>	1 128
291	Migrants' labour market participation and career progress	<i>Hybrid</i>	1 152
292	Understanding migration decisions and policymaking	<i>Hybrid</i>	1 163

293	The interplay between migration and climate change	<i>Hybrid</i>	1 167
294	Multiple Ethnic Inequalities on Occupational Achievement	<i>Onsite</i>	1 008
295	Inequalities in the access to reproductive rights among immigrants in European contexts	<i>Onsite</i>	3 017
296	Unequal transitions? Social inequalities in education and education-to-work transitions of young migrants in Europe	<i>Onsite</i>	3 045
297	Global Inequality and the Hierarchy of Humanity	<i>Online</i>	NA
298	Migrant Activism: Modalities and Impact	<i>Online</i>	NA
299	Decolonial and postcolonial approaches to studying transnational migration	<i>Online</i>	NA
300	The inclusion of refugee youth in educational systems	<i>Online</i>	NA
301	Labour market policies for Posted Workers and Temporary Labour Migration Programmes and the strategies of the workers involved	<i>Online</i>	NA
302	Different facets of inclusion, exclusion, and belonging	<i>Online</i>	NA





About Warsaw

Voted the European Best Destinations 2023, the capital city of Poland has 1.7 million inhabitants, 150 cinemas, theatres, music venues and museums, 95 parks, and 450 kilometres of bike trails. Over 8.3 million tourists per year visit this Europe's most rapidly developing city with extraordinary energy. The city vibrates with social and cultural life, i.e. in post-industrial spaces and Vistula Boulevards.

You can find the most important information on Poland and Warsaw with recommended links and maps on the University of Warsaw Welcome Point website.

Enjoy Warsaw

The capital city of Warsaw has something to offer for everyone. It combines tradition and modernity reflected in the city's architecture. Warsaw has dozens of museums and galleries for you to visit, e.g. Royal Castle, the baroque Museum of King Jan III's Palace at Wilanów, Fryderyk Chopin Museum, POLIN Museum of the History of Polish



Jews or Warsaw Rising Museum that help visitors understand contemporary Poland. Almost half the area of the city is green, with publicly accessible historical gardens such as the vast garden of the Royal Łazienki Museum, parks, squares, nature reserves, botanical gardens and one of the most beautiful urban beaches in the world. Check out the list of the capital's attractions and special-themed routes on the Tourist Website.

Warsaw is also the culinary capital of Poland and one of the most vegan-friendly cities in Europe. It offers a vast range of trendy and fine-dining restaurants, pubs, and bars for meetings with friends, casual milk bars, pastry shops, food truck meet-ups and outdoor breakfast markets. Discover where to eat and drink in the Warsaw culinary guide.

How to get to Warsaw

Warsaw is an excellent plane and train transportation hub. It can easily be reached through its two international airports (Chopin Airport and Warsaw Modlin Airport) and from different IMISCOE member institutions by train (i.e. Prague, Vienna, Berlin). Please check the Tourist Website for more details.



How to get to the city center from Chopin airport

You can reach the city center by public transportation:

- bus number 175 runs to the center and around the Old Town (Stare Miasto)
- bus numbers 148 and 188 run to the other side of the river, to Praga, Grochów and Gocław
- night bus number N32 runs to the city centre
- suburban train line S2, S3 or RL – more information

Transport tickets are required on all lines.

By taxi:

A taxi rank in front of the Terminal offers selected and reliable taxi companies: Ele Taxi or Uber.

How to get from Modlin airport to Warsaw

By bus:

The bus stops at Modlin Airport are located just in front of the exit gates, outside of the arrivals terminal. Moreover, the bus arrives at (and departs from) Warsaw city centre's "Marriott" Hotel bus stop (corner of T.

Chałubińskiego and Nowogrodzka Streets), near the Central Railway Station. Contbus is the main public transportation method from Warsaw Modlin Airport (WMI) to Warsaw city centre. The bus is available multiple times a day and departures vary depending on the day of the week. The trips usually last around 45 mins depending on the traffic conditions. One-way tickets for the Contbus cost €6.70 (PLN 31.17). Tickets can be purchased via the official company website, or directly from the driver inside the bus in cash in the local currency PLN. Furthermore, you can also find out more information about Flixbus connection [here](#).

By taxi:

The airport recommends one taxi company: Taxi Modlin. Transfer to the centre of Warsaw range from 100 to 250 PLN (depending on the district.)

How to get around in Warsaw

The best way to get around Warsaw is through fast and inexpensive public transport. The city has a well-developed network of buses, trams, suburban trains and metro. You can also use the Warsaw public bikes, including electric that can be hired at nearly 350 locations in the city (the first 20 minutes are free). Information about public transport is available on the Tourist Website and the University of Warsaw Welcome Point website. You can find the website <https://jakdojade.pl/WARSZAWA> to be useful for planning trips around.

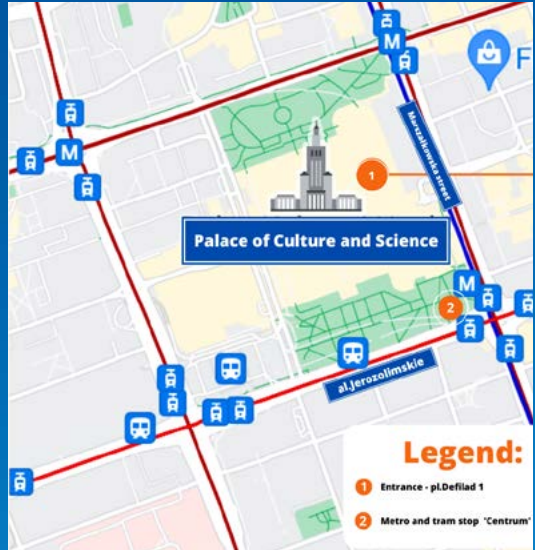


Palace of Culture and Science

Conference Dinner venue

One of the highest and most recognisable building in Warsaw can be seen from almost every part of the capital. Currently, the palace is home to theatres, a cinema, museums, trendy pubs and the main Warsaw Tourist Information office. Go up to the observation deck on the 30th floor of the building and see the beautiful panorama of the city from a height of 114 metres.





How to get there?

The nearest metro station is the "Centrum" of the **M1** line.

In addition, you can also use tram connections - line **4,7, 9, 15, 19,22, 24, 25, 35, 36, 78**

After entering the building, climb the stairs and head left.

About IMISCOE

Our mission

IMISCOE (International Migration Research Network) is the largest interdisciplinary network of scholars in the field of migration. The Network currently consists of 66 research institutes from different countries around the world and from various disciplines, including sociology, political science, anthropology, economics, law, demography, public administration, geography and history.

Since April 2022, the coordination of IMISCOE is based in the Centre for Ethnic and Migration Studies (CEDEM) of the University of Liège, with Jean-Michel Lafleur acting as IMISCOE Coordinator and Daniela Vintila as IMISCOE Associate Coordinator and Senior Network Officer. The Network Office team also includes Angeliki Konstantinidou as Network Officer and Marine Maréchal as Finance Officer.

Over the years, IMISCOE has developed and promoted a wide range of activities, including:

Research activities

IMISCOE provides a platform for scholars throughout the world to get together, initiate comparative research and organize joint research projects. The Network supports and maintains a broad range of Standing Committees that cover significant topics in migration studies, in line with the special expertise of its members. The development of common lines of study is primarily research-driven. IMISCOE derives its relevance for society in general and for policy and politics in particular from its theory-based, analytical contributions.

Publications

IMISCOE has established a book series with Springer, covering key contributions in the field of migration. To promote the dissemination of research and the widest possible access to research, IMISCOE has become the leading supporter of Open Access publishing in this research area. Most books are available in the OAPEN library. Furthermore, the Network also sponsors the Open Access journal Comparative Migration Studies, owned by Springer.

Events

Throughout the year, numerous IMISCOE events are organized in the context of research collaborations, publication events, PhD trainings, etc. The biggest event on the Network's agenda is the IMISCOE Annual Conference, which has been organized

every year since 2004 by different IMISCOE Member Institutes. Other important annual events are the IMISCOE Spring Conference and the IMISCOE PhD School. Besides these annual events, numerous activities are organized throughout the year by the various Standing and Executive Committees of the IMISCOE Network.

Training and Awards

Training of young researchers is an essential task of IMISCOE. By pooling the resources and expertise of its members, the Network facilitates the highest quality training in the field of migration studies. To this aim, the Network provides annual PhD Schools, as well as specific training modules at other IMISCOE events. The IMISCOE PhD Network and the IMISCOE PhD Academy are also an integral part of the IMISCOE Network. Also, every year IMISCOE awards the Maria Ioannis Baganha Award to the best PhD thesis in the field of migration, and the Rinus Penninx Award for the best paper presented at the IMISCOE Annual Conference.

List of IMISCOE Member Institutes

CEDEM	- Center for Ethnic and Migration Studies, University of Liège (Coordinating Institute of IMISCOE)
AMCR	- Amsterdam Centre of Migration Research, University of Amsterdam
AMIS	- Centre for Advanced Migration Studies, University of Copenhagen
BICC	- Bonn International Centre for Conflict Studies
BIRMM	- Brussels Interdisciplinary Research Centre on Migration and Minorities, Vrije Universiteit Brussel
CERC in Migration and Integration	- Toronto Metropolitan University
CESSMIR	- Centre for the Social Study of Migration and Refugees, Ghent University
CGM	- Centre on Global Migration, University of Gothenburg
CIES - Iscte	- Centre for Research and Studies in Sociology, University Institute of Lisbon
CMR	- Centre of Migration Research, University of Warsaw
CMRS	- Centre for Migration and Refugee Studies, American University Cairo
COMPAS	- Centre on Migration, Policy and Society, University of Oxford
DEMIG	- Department for Migration and Globalisation, Danube University Krems

DEUSTO	- Research Unit on Migration, Management of Diversity and Social Cohesion, University of Deusto
DeZIM	- Deutsches Zentrum für Integrations und Migrationsforschung
ERCOMER	- European Centre on Migration and Ethnic Relations, University of Utrecht
ESOMI	- International Migration Sociology Team, University of A Coruña
EUI	- European University Institute
EUR	- Erasmus University Rotterdam
FAFO	- Institute for Labour and Social Research
FHSE	- Faculty of Humanities, Education and Social Sciences, University of Luxembourg
FIERI	- Forum Internazionale ed Europeo di Ricerche sull'Immigrazione
GEOMIGRACE	- Geographic Migration Centre, Charles University
GRAMNet	- Glasgow Refugee, Asylum and Migration Network, University of Glasgow
GRITIM	- Interdisciplinary Research Group in Immigration, Universitat Pompeu Fabra
ICM	- Institut Convergences Migrations
ICMPD	- International Centre for Migration Policy Development
IES	- Institute for Ethnic Studies, Slovenia
IGOT-UL	- Instituto de Geografia e Ordenamento de Território, University of Lisboa
IMIS	- Institute for Migration Research and Intercultural Studies, University of Osnabrück
IML	- International Migration Laboratory, University of Trento
INED	- Institut National d'Études Démographiques
InZENTIM	- Interdisciplinary Centre for Integration and Migration Research, University of Duisburg - Essen
ISF	- Institute for Social Research Oslo
ISMU	- Fondazione Ismu - Iniziative e Studi sulla Multietnicità
ISR	- Institute for Urban and Regional Research, Austrian Academy of Sciences
IUEM	- Instituto Universitario de Estudios sobre Migraciones, Universidad Pontificia Comillas de Madrid

LIMS	- Leiden Interdisciplinary Migration Seminar, University of Leiden
MACIMIDE	- Maastricht Centre for Citizenship, Migration and Development, Maastricht University
MDX	- Middlesex University
MIDEX	- Lancashire Research Centre for Migration, Diaspora and Exile, University of Central Lancashire
MIF	- Migration Institute of Finland
MIGLOBA	- The Nnetwork on Mmigration and Gglobal Mmobility of the University of Antwerp
MIM	- Malmö Institute for Studies of Migration, Diversity and Welfare, Malmö University
MIMIC	- Monash Migration and Inclusion Centre, Monash University
MiReKoc	- Koç University
MML PLUS	- Salzburg Migration and Mobility Studies Lab
MPI-MMG	- Max Planck Institute for the Study of Religious and Ethnic Diversity
NIBR	- Norwegian Social Research, OsloMet University
NIDI	- Netherlands Interdisciplinary Demographic Institute
NTNU	- NTNU Social Research Centre for Diversity and Inclusion
OU	- Open University
PRIO	- Peace Research Institute Oslo
REMESO	- Institute for Research on Migration, Ethnicity and Society
RUHR	- UNIVERSITAET BOCHUM - Ruhr - Universität Bochum
RUNOMI	- Radboud University Network on Migration Inclusion, Radboud University
SCIENCES PO	- Sciences Po Paris
SCMR	- Sussex Centre for Migration Research, University of Sussex,
SFM	- Swiss Forum for Migration and Population Studies, University of Neuchâtel
UNISHEF	- University of Sheffield
UNIVE	- Ca'Foscari University
UNIVERSITY COLLEGE CORK	- University College Cork

UNIVERSITY OF GIRONA	- University of Girona
UNIZG	- University of Zagreb
URMIS	- Unité de recherches Migrations et Société, Université Côte d'Azur
WEI	- Work and Equalities Institute, University of Manchester

Governance of IMISCOE

IMISCOE's governance structure includes the following bodies:

IMISCOE Board of Directors

The Board of Directors (BD) is the central decision-making body of IMISCOE. Formed by representatives of all Member Institutes, the BD takes decisions on the overall strategy and organization of the Network, including the appointment of hosts for our major events, funds allocation, membership policy or the establishment of new Standing and Executive Committees in the Network. Wiebke Sievers (Austrian Academy of Sciences) is the Chair of the BD for the period 2022-2026.

Current members of the Board of Directors:

Ahmet İçduygu	- Koç University
Anders Neergaard	- Institute for Research on Migration, Ethnicity and Society
Andrea Spehar	- Centre on Global Migration
Andreas Pott, Helen Schwenken	- Institute for Migration Research and Intercultural Studies
Andrew Geddes	- European University Institute
Aneta Piekut, Lucy Mayblin	- University of Sheffield
Anja van Heelsum/ Saskia Bonjour/Bram Lancee	- Amsterdam Centre of Migration Research
Anja Weiß	- Interdisciplinary Centre for Integration and Migration Research
Anna Triandafyllidou	- Toronto Metropolitan University
Benjamin Etzold	- Bonn International Centre for Conflict Studies
Birte Nienaber	- Faculty of Humanities, Education and Social Sciences, University of Luxembourg
Caitriona Ni Laoire	- University College Cork
Dušan Drbohlav	- Geographic Migration Centre

Eleonore Kofman	- Middlesex University
Ferruccio Pastore	- Forum Internazionale ed Europeo di Ricerche sull'Immigrazione
Francesca Campomori	- Ca'Foscari University
Francesca Stella	- Glasgow Refugee, Asylum and Migration Network, University of Glasgow
François Herran, Camille Schmoll, Marie-Caroline Saglio-Yatzimirsky	- Institut Convergences Migrations
Géraldine Bozec	- Unité de recherches Migrations et Société
Gianni D'Amato	- Swiss Forum for Migration and Population Studies
Giuseppe Sciortino	- International Migration Laboratory
Goranka Lalić Novak	- University of Zagreb
Gorka Urrutia Asua	- Research Unit on Migration, Management of Diversity and Social Cohesion
Guia Gilardoni	- Fondazione Ismu - Initiative e Studi sulla Multietnicità
Hanne Kavli	- Institute for Labour and Social Research
Helga de Valk	- Netherlands Interdisciplinary Demographic Institute
Ibrahim Awad	- Centre for Migration and Refugee Studies
Ilke Adam, Hannah Vermaut	- Brussels Interdisciplinary Research Centre on Migration and Minorities
Ilse Derluyn, Floor Verhaeghe	- Centre for the Social Study of Migration and Refugees
Inmaculada Serrano	- Instituto Universitario de Estudios sobre Migraciones, Universidad Pontificia Comillas de Madrid
Jaqueline Broadhead	- Centre on Migration, Policy and Society
Jan-Paul Brekke	- Institute for Social Research Oslo
John Wrench	- NTNU Social Research Centre for Diversity and Inclusion
Jørgen Carling, Marta Bivand Erdal	- Peace Research Institute Oslo
Karlijn Haagsman	- Maastricht Centre for Citizenship, Migration and Development
Kristian Tronstad, Marie Louise Seeberg	- Norwegian Social Research
Kyoko Shinozaki	- Salzburg Migration and Mobility Studies Lab
Lara Momesso	- Lancashire Research Centre for Migration, Diaspora, and Exile
Laura Oso	- International Migration Sociology Team

Lucinda Fonseca	- Institute de Geografia e Ordenamento de Território
Marie Sandberg	- Centre for Advanced Migration Studies
Marco Martiniello	- Centre for Ethnic and Migration Studies, University of Liège
Margit Fauser	- Ruhr-Universität Bochum
Mathias Czaika, Albert Kraler	- Department for Migration and Globalisation, Danube University Krems
Milena Belloni	- The Network on Migration and Global Mobility, University of Antwerp
Olaf P. van Vliet	- Leiden Interdisciplinary Migration Seminar
Òscar Prieto-Flores	- University of Girona
Özge Bilgili	- European Centre on Migration and Ethnic Relations
Patrick Simon	- Institut National d'Études Démographiques
Paul Long	- Monash Migration and Inclusion Centre
Parvati Raghuram	- Open University
Pascal Beckers	- Radboud University Network on Migration Inclusion
Paweł Kaczmarczyk	- Centre of Migration Research, University of Warsaw
Peter Scholten, Godfried Engbersen	- Erasmus University Rotterdam
Pieter Bevelander	- Malmö Institute for Studies of Migration, Diversity and Welfare
Ricard Zapata-Barrero, Zenia Hellgren	- Interdisciplinary Research Group in Immigration, Universitat Pompeu Fabra
Saara Pellander, Marja Tiilikainen	- Migration Institute of Finland
Sarah Scuzzarello	- Sussex Centre for Migration Research
Sonja Novak Lukanović	- Institute for Ethnic Studies
Stefania Marino	- Work and Equalities Institute, University of Manchester
Steven Vertovec, Ulrike Bialas	- Max Planck Institute for the Study of Religious and Ethnic Diversity
Thais França	- Centre for Research and Studies in Sociology
Veronika Bilger	- International Centre for Migration Policy Development
Virginie Guiraudon	- Sciences Po
Wiebke Sievers	- Institute for Urban and Regional Research, Austrian Academy of Sciences
Zeynep Yanasmayan	- Deutsche Zentrum für Integrations- und Migrationsforschung

IMISCOE Executive Board

The IMISCOE Executive Board (EB) oversees the management and coordination of the Network and its operation. It consists of IMISCOE Coordinators, the Chair and Vice-Chair of the Board of Directors and representatives of the Member Institutes elected by the BD. Parvati Raghuram (Open University) is the EB Chair for the period 2022-2026.

List of current EB members: Parvati Raghuram (EB chair), Wiebke Sievers (BD chair), Pieter Bevelander, Eleonore Kofman, Ahmet İçduygu, Òscar Prieto Flores

IMISCOE Coordinators & Network Office

Since April 2022, the Centre for Ethnic and Migration Studies of the University of Liège is the coordinating institute of IMISCOE. Jean-Michel Lafleur acts as IMISCOE Coordinator and Daniela Vintila as Associate Coordinator and Senior Network Officer. The IMISCOE central administration also includes Angeliki Konstantinidou (Network Officer) and Marine Maréchal (Finance Officer).

Executive Committees

IMISCOE's Executive Committees are task-specific committees dealing with different aspects regarding the Network's core activities, functioning and operations.

IMISCOE Committee on Diversity, Equality and Inclusion

This Committee focuses on IMISCOE's strategy on diversity, equality and inclusion.

Committee members: Adham Aly, Anders Neergaard, Guia Gilardoni, Jelena Džankić, Marco Martiniello, Marshia Akbar, Nir Cohen, Thais França, Zeynep Menkütek

Editorial Committee

This is the Editorial Committee for the IMISCOE Research series associated with Springer. All Open Access books published in this series are available here.

Committee members: Anna Triandafyllidou (editor), Irina Isaakyan (managing editor), Jorge Macaísta Malheiros, Laura Oso, Eva Ostergaard-Nielsen, Agata Gorny, Stephanie Alison Condon, Aneta Piekut, Ettore Recchi, Sabrina Marchetti, Irene Ponzio, Helen Schwenken, Luigi Achilli, Justyna Salamonska, Stephan Scheel, Benjamin Etzold, Karin Borevi, Panos Hatziprokopiou, Ayhan Kaya

Elections Committee

This Committee manages and ensures the fairness and transparency of all elections in IMISCOE.

Committee members: Sebastián Umpierrez de Reguero, Sorina Soare, Verena Wisthaler

External Affairs Committee (EAC)

The Committee deals with the promotion of IMISCOE bridges between research,

policy, and society.

Committee members: Ricard Zapata-Barrero (chair), Albert Kraler, Asya Pisarevskaya, Guia Gilardoni, Jacqueline Broadhead, Yvan Gastaut, Raquel Matias, Fiona-Katharina Seiger

One of the outputs of the External Affairs Committee is the IMISCOE Migration Podcast, exploring the latest in migration and mobility research globally.

Podcast team members:

1. Team & Programming Coordinators: Milena Belloni, Sarah Vancluysen and Roos Derrix
2. Producers: Fiona Seiger and Kate Dearden
3. Financial administration and engagement: Asya Pisarevskaya
4. Interviewers: 13 interviewers who are completing or have completed their PhD

Finance Committee

This Committee serves as the IMISCOE Network's auditing committee.

Committee members: Veronika Bilger and Pawel Kaczmarczyk

IMISCOE PhD Network

The IMISCOE PhD Network connects PhD students worldwide with the IMISCOE Network.

PhD Network Board as of 2022: Maria Shaidrova (PhD representative), Mateusz M. Krawczyk (PhD vice-representative), Elina Jonitz, Sebastian Carlotti, Agnese Paciardi, Simona Schreier, Billie Martiniello, Caroline Adolfsen, Adriana Calvo, Irene Gutiérrez Torres, Diletta Marcucci, Alice Fill

PhD Network Advisory Board: Sandra N. Morgenstern, Carolin Müller, Samuel D. Schmid, Olav Nygård, Linköping University

Training Committee

This Committee encourages and facilitates training activities by organising the IMISCOE PhD Academy.

Members: Marta Bivand Erdal, Eleonore Kofman, Thais França, Mateusz Krawczyk, Laura Morales, Cosmin Ionut Nada, Saleh Seid Adem, Nomkhosi Mbatha, Emmaleena Käkelä, Sajia Ferdous

Research Infrastructure

IMISCOE Standing Committees (SC)

Promoting high-quality and impactful research is the central aim of IMISCOE. To achieve this, 10 Standing Committees organized around broad research topics are in place:

SC Superdiversity, Migration and Cultural Change (DIVCULT)

Coordinators: Marco Martiniello and Wiebke Sievers; Elsa Mescoli as assistant coordinator

PhD representative: Carolina Triana-Cuellar

SC Education and Social Inequality (EduSocial)

Coordinators: Elif Keskiner, Christine Lang, Jens Schneider, Nubin Ciziri, Zehra Colak, Thais França, Antonina Levatino

SC Gender and Sexuality in Migration Research (GenSeM)

Coordinators: Sarah Scuzzarello and Laura Morosanu

SC Immigration, Immigrants and the Labour Market in Europe (IILME)

Coordinators: Lisa Berntsen, Katarina Hollan, Nahikari Irastorza, Kornélia Anna Kerti, Stefania Marino, Anders Neergaard, Rinus Penninx, Judith Roosblad

SC Methodological Approaches and Tools in Migration Research (Meth@Mig)

Coordinators: Justyna Salamońska, Agata Górny, Laila Omar, Steffen Pötzschke, Sebastian Rinken, Evren Yalaz

SC Migration Politics and Governance (MigPoG)

Coordinators: Cathrine Talleraas and Maria Schiller

PhD representatives: Dorothea Pozzato and Andrea Ricci

SC Migrant Transnationalism (MITRA)

Coordinators: Brigitte Suter and Özge Bilgili

SC Migration, Citizenship and Political Participation (MIGCITPOL)

Coordinators: Gianni D'Amato, Jean-Thomas Arrighi, Ana Margheritis, Luicy Pedroza, Sebastián Umpiérrez de Reguero

PhD representative: Sebastián Umpierrez de Reguero

SC Older Migrants

Coordinators: Tineke Fokkema and Ruxandra Oana Ciobanu

PhD representative: Livia Tomas Eggimann

SC Reflexivities in Migration Studies (Reflexivities)

Coordinators: Anna-Lisa Müller, Janine Dahinden, Andreas Pott

Migration Research Hub

IMISCOE's Migration Research Hub (MRH) is an interactive research database that brings publications, datasets and projects together under one roof.

IMISCOE Awards

Maria Baganha Award

Since 2010, the Maria Ioannis Baganha Distinguished Dissertation Award stimulates and recognizes excellent PhD research in the field of migration. Maria Ioannis Baganha was a leading migration scholar at the University of Coimbra's Centre for Social Studies. She was one of the IMISCOE's founding members and the chair of its Board of Directors until she passed away in June 2009. To commemorate her work in the field of migration studies and her commitment to the network, the IMISCOE Board of Directors has dedicated the IMISCOE dissertation award to her.

IMISCOE Baganha Award Committee Members: Rosa Aparicio (chair), Mathias Czai-ka, Han Entzinger, Thaïs França, Paweł Kaczmarczyk, Russell King, Lena Näre, Giuseppe Sciortino, Endre Sik, Judith Tóth

Rinus Penninx Best Paper Award

The Best Paper Award was established in 2014 and is chaired by retired IMISCOE coordinator Rinus Penninx. This Award celebrates every year the best paper submitted to and presented at the IMISCOE Annual conference following a rigorous review process. As of May 2022, the following jury is in place: Ruxandra Oana Ciobanu, Blanca Garcés-Mascareñas, Pedro Gois, Laura Oso, Ursula Reeger, Jens Schneider, Deniz Sert and Rinus Penninx.

Forthcoming IMISCOE Events

2024 Spring Conference

2024 Annual Conference

2024 IMISCOE PhD School

Global race, inclusivity and solidarity in migrant experiences

IMISCOE PhD School – 3-7 June 2024, Preston (United Kingdom)

Organizers: The University of Central Lancashire's Research Centre for Migration, Diaspora and Exile (MIDEX) and Global Race Centre for Equality (GRACE)

Collaboration with Comparative Migration Studies

Comparative Migration Studies (CMS) is an international, peer-reviewed open access journal that provides a platform for articles that focus on comparative research in migration, integration, and race and ethnic relations. IMISCOE is sponsoring the journal and fully supports each year a number of Open Access articles published by IMISCOE members, while also providing some fee waivers for authors based in institutions outside of EU/OECD countries.

IMISCOE 2024 SPRING CONFERENCE

IMISCOE SPRING
CONFERENCE in
cooperation with the
Migration Research
Center at Koç University

MOBILITIES AND IMMOBILITIES IN AN ERA OF POLYCRISIS

THEMES

Polycrisis
Mobility/Immobility
Stages of Migration
Political Crises
Global Economic & Financial Crises
Health & Well-Being
Environmental Crises & Climate Change



17-19 APRIL
2024

KOÇ UNIVERSITY
ISTANBUL

mirekoc.ku.edu.tr

IMISCOE



MiReKoc

KOÇ
ÜNİVERSİTESİ

IMISCOE

LISBOA JULY 2024

XXI IMISCOE Annual Conference

CONFERENCE THEME

**MIGRATION
AS A SOCIAL
CONSTRUCTION**
A REFLEXIVE TURN

3 - 5 July 2023
Iscte - University Institute of Lisbon

iscte
UNIVERSITY
INSTITUTE
OF LISBON

cies _ iscte
Centre for Research
and Studies in Sociology

The IMISCOE

MIGRATION PODCAST



SCAN ME



Follow our podcast to hear from researchers and scholars as they share their insights, and discover the latest in global Migration and Mobility research.

like, follow, and subscribe on



Spotify



SOUNDCLOUD

CENTRAL AND EASTERN EUROPEAN MIGRATION REVIEW

The Central and Eastern European Migration Review

(CEEMR) is an international, multidisciplinary, peer-reviewed, **diamond open-access journal** dedicated to promoting academic discussion on scholarly works and research on migration from, in and to the region of Central and Eastern Europe (CEE).



FIND OUT MORE:

CEEMR

Central and Eastern European
Migration Review

ONLINE
OPEN-ACCESS
JOURNAL

Available at:

<http://www.ceemr.uw.edu.pl>

CEEMR publishes original academic papers devoted to case studies of CEE countries as well as works taking a wider international and transnational perspective in examining migration processes relevant to CEE countries: their citizens, ethnic minorities, institutions, territories, and policies.

CEEMR appears twice a year as an online open-access journal.

It is free for readers and free for authors. It is published by the Centre of Migration Research, University of Warsaw, and the Polish Academy of Sciences.

The materials presented in the journal include scientific articles and research notes.

CEEMR is indexed in various international databases, including Scopus and the ESCI Web of Science Core Collection.



CENTRE OF
MIGRATION
RESEARCH



Interested in learning more about **Open Science**?



Meet **Prof Laura Morales** at the IMISCOE Conference
The RDA / EOSC Future Ambassador

3-5 July

in the Publishers area of the conference venue

Learn about EOSC

Interconnected research for a digital age

The European Open Science Cloud (EOSC) will give researchers and research service providers easy and secure access to a web of Findable, Accessible, Interoperable and Reusable (FAIR) data and related services.

EOSC aims to provide a virtual environment for interdisciplinary data-driven research, whereby ... Users from anywhere in Europe can discover and access services, data and other research products in any domain as well as create and share breakthroughs with other research communities.

Research service providers can link up their service offers and create synergies with science projects tackling climate change, COVID-19 and other global challenges.

... how researchers can use it

YOUR EOSC PLATFORM JOURNEY

- seamlessly find and access datasets, publications, tools, services (directly with your institution's authorisation credentials)
- request notebooks, modelling analysis, computing software and other resources from top service providers
- customise workflows to perform repetitive experimentation or analysis with different EOSC services (without the need for manual manipulation)
- publish and share your own research data (+ make it FAIR)
- increase visibility of research data outputs in your field and other domains

... and about the role of an RDA/EOSC Future Domain Ambassador!



The EOSC Future project is co-funded by the European Union Horizon Programme call INFRAEOSC-03-2020 - Grant Agreement Number 101017536

On behalf of the organizers, we express our
thanks to all those involved in the making of
this booklet.

Special thanks to:

Anita Brzozowska & Joanna Bagadzińska
for coordination and conceptualization,

Renata Stefańska & Magdalena Lesińska
for editorial work,

Marcin Bójko
for graphic design.