

21st Annual Conference

IMISCOE

**MIGRATION AS A
SOCIAL CONSTRUCTION
A REFLEXIVE TURN**



2-5 JULY 2024
Lisbon & Online

iscte UNIVERSITY
INSTITUTE
OF LISBON

cies _iscte
Centre for Research
and Studies in Sociology

Contents

ABOUT THE ORGANISERS.....	4
Iscte - University Institute of Lisbon	4
Centre for Research and Studies in Sociology (CIES)	6
WELCOME MESSAGES	8
Welcome Message from the Host Committee.....	9
Welcome Message from IMISCOE Coordinators	11
ABOUT THE PARTNERS.....	14
HOST COMMITTEE	16
SCIENTIFIC COMMITTEE	17
CONFERENCE VENUE.....	18
WI FI.....	20
CODE OF CONDUCT	36
INFORMATION FOR CHAIRS AT THE IMISCOE CONFERENCE.....	42
OPENING PLENARY	46
SEMI-PLENARY SESSION 1.....	47
SEMI-PLENARY SESSION 2.....	48
CLOSING PLENARY	49
OVERALL PROGRAM	50
DETAILED PROGRAM	54

SIDE EVENTS	74
STANDING COMMITTEE MEETINGS	86
PhD NETWORK Activities	88
ABOUT LISBON	94
Enjoy the City.....	95
How to get to Lisbon	96
How to get around in Lisbon.....	97
LISBON'S COMMITMENT TO SUSTAINABILITY	98
ABOUT IMISCOE	100

ABOUT THE ORGANISERS

Iscte - University Institute of Lisbon

The Iscte - University Institute of Lisbon was founded in 1972 as one of Portugal's first modern universities, with the central aim of studying labour and social dynamics in a rapidly changing world. Since its establishment, the university has expanded its disciplinary reach into four schools: Iscte Business School, the School of Sociology and Public Policy, the School of Technology and Architecture and the School of Social Sciences and Humanities. The university is actively engaged in collaborative projects, networks and partnerships around the world, including a range of educational, training and research programs supported by the European Union.

Iscte's main campus is located in the center of Lisbon, a vibrant city, awarded as the European Green Capital in 2020, that effortlessly blends traditional heritage, with striking modernism creating a city of contrasts.

The university campus comprises four buildings (around 45,000 m²), one of which won a Valmor architecture award. Access to the Iscte's campus is free and open to all visitors to find not only a robust intellectual tradition but also a vibrant, multicultural environment.

<https://iscte.pt>

iscte UNIVERSITY
INSTITUTE
OF LISBON



Centre for Research and Studies in Sociology (CIES)

The Centre for Research and Studies in Sociology / Centro de Investigação e Estudos de Sociologia (CIES-Iscte) of the Iscte- University Institute of Lisbon, is a R&D unit, recognised and evaluated by the FCT, in the area of social sciences dedicated to studying contemporary social problems from a multidisciplinary perspective. Constituted in 1985, it is an organic unit of Iscte and is part of its School of Sociology and Public Policy.

CIES-Iscte's main scientific domain is sociology, developing relevant activity in the fields of public policy, political science, communication, education, modern and contemporary history and social work. The Centre's activity is characterised by a demanding articulation between basic research and applied research mainly directed at the design, monitoring and evaluation of public policies in various sectors and areas of intervention. The Centre's research and scientific production, fosters diversity and the crossing of intensive and extensive approaches, aimed at deepening the analytical relationship between the study of social, political and historic macro-processes and the social, cultural and spatial micro-dynamics.

The Centre is involved in numerous projects promoted by national and European agencies or foundations, research programmes and international scientific cooperation networks. CIES is responsible for the scientific and the administrative coordination of 7 PhD programmes - Communication, Modern and Contemporary History, Policies of School Administration and Management, Political Science, Public Policy, Social Work, Sociology - and is associated with 4 others.

In the field of scientific communication the centre has a consolidated editorial activity, publishing the journal Sociologia Problemas e Práticas and several collections of books through the publisher Mundos Sociais.

<https://cies.iscte.pt>

cies _iscte

**Centre for Research
and Studies in Sociology**



WELCOME MESSAGES

Host Committee

**IMISCOE's
Coordinators**

Welcome Message from the Host Committee

On behalf of the Organising Committee at the CIES-Iscte we are delighted to welcome all the colleagues to the 21st IMISCOE Annual Conference in ISCTE-Instituto Universitário de Lisboa, between the 2-5 of July. Our conference explores migration as a social construction, his critical approach focuses on the social processes that determine the classification of mobile individuals and their descendants as migrants. International borders and their management are the outcome of social processes, which become institutionalized and thereby constrain subsequent action..

Thereby, we seek to tackle the framing of immigration as a problem that needs to be avoided, controlled and solved. We endeavour to explore the interplay between migration law and policy, public debate, rights access, social movements, civil society, and migrants' experiences and actions in their destination, transition, and origin countries. By building on the intersectional nature of migration research, our ultimate goal is to contribute to the theoretical understanding and empirical study of the processes of social construction of migration and their impact on social reality at the global and national levels.

Hosting the conference in Portugal is particularly relevant now for two reasons. First, Portugal is entering a new phase in its immigration dynamics, with an increase in arrivals and greater diversity in terms of countries of origin, ages, mobility paths, and more. Secondly, the country is experiencing a shift in migration policies towards a more securitizing and controlling paradigm, driven by the rise of the far-right in parliament and the increasingly nationalist discourse across Europe. Consequently, immigration has gained significant visibility in media coverage, intensifying the debate within Portuguese society. Moreover, Portugal still struggles to break from its traditional narrative about its colonial past, denying how it has shaped the racial and ethnic inequalities that persist in Portuguese society. Thus, the conference emerges as a valuable platform to raise awareness within Portuguese society, policymakers, journalists, and scholars about the importance of analyzing immigration from a critical, evidence-based perspective to support and inform policy decisions. Moreover, it invites us to reflect on these dynamics not only within the Portuguese context but also to explore their connections with global trends.

Should you be attending in person or virtually, be inspired by the 21st Annual IMISCOE Conference and its potential to foster new collaborations, forge enduring partnerships, and generate ideas that will shape the future of migration studies. Enjoy this exceptional event and seize the opportunity to connect with fellow scholars and practitioners.

Thaís França and João Carvalho (on behalf of the Organising Committee)



Thaís França



João Carvalho



Daniel Malet Calvo



Liliana Azevedo



Raquel Matias



Simone Castellani



Sofia Gaspar

Welcome Message from IMISCOE Coordinators

Jean-Michel Lafleur and Daniela Vintila, and the IMISCOE Network Officer Angeliki Konstantinidou Centre for Ethnic and Migration Studies (CEDEM), University of Liège

Dear members and friends of IMISCOE, We would like to warmly welcome you to the 21st IMISCOE Annual Conference hosted by the Centre for Research and Studies in Sociology (CIES-Iscte) of the University Institute of Lisbon.

With almost 1000 on-site participants and more than 450 participants joining online, this event is the largest IMISCOE Annual Conference that we have organized so far. We are delighted to see that such a large number of colleagues from different disciplinary backgrounds, career stages, and countries around the world will join us for this flagship event of our IMISCOE community. We wish to sincerely thank our colleagues from CIES-Iscte for having proposed such a timely conference theme on “Migration as a Social Construction: A Reflexive Turn” and for having worked tirelessly, together with our IMISCOE Network Office, to create an inclusive and stimulating conference environment.

The fact that this 2024 IMISCOE Annual Conference has attracted such an impressive interest among migration scholars from all over the world also





indicates that we are on the right path in our journey to make IMISCOE more diverse and inclusive. Since our last Annual Conference in Warsaw, we continued our efforts in this regard and took important steps forward, with the support of our Board of Directors, the Executive Board, our individual members, the IMISCOE PhD Network and all our Executive and Standing Committees.

We recently had the pleasure of welcoming to the IMISCOE community our first Member Institutes in Latin America (Casa Grande University, Ecuador) and the US (Centre on Forced Displacement, Boston University), in addition to scholars from all over the world who decided to join our Network for the first time and attend this Annual Conference. The IMISCOE PhD Network, our PhD Academy, and all our Standing Committees have also continued to diversify their membership and activities within and beyond Europe, while also actively contributing to the rich programme of this 2024 Annual Conference. The recently created Standing Committee on Race, Racism, and Discrimination already started its work and organized important sessions for this Annual Conference, whereas the newly reformed Standing Committee “Families, Welfare, Care and the Life Course” (former SC Older Migrants) has expanded its focus to include key research lines for the IMISCOE community. For the preparation of this 21st Annual Conference, the

IMISCOE Executive Committee on Diversity, Equality and Inclusion has also been working closely with the conference host and with different IMISCOE governance bodies to ensure that our Network's commitment to diversity and inclusion materializes in practice.

We are committed to continue progressing in the implementation of concrete actions to further diversify our Network and make our events more inclusive, with the crucial support of our conference hosts and of all institutional and individual members of IMISCOE.

We wish you all an excellent Annual Conference!

*Jean-Michel Lafleur and Daniela Vintila, IMISCOE Coordinators
Angeliki Konstantinidou, Network Officer*



ABOUT THE PARTNERS

On behalf of the organizers of the conference, we would like to express our acknowledgements to our partners: Turismo de Portugal, Visit Portugal, Brasilia Journal, Berghahn Books, Cogitatio Press, Hotel Roma, Nicola, Fundação Oriente, Quinta da Lapa, The Gutsy Captain Kombucha, Cerveja Musa, Portugália Restauração, Pastéis de Belém and Companhia Portuguesa do Chá for providing honorary patronage and support for the event.





SUPPORTED BY



FUNDAÇÃO
ORIENTE



QUINTA DA
LAPA
EST. 1733



Pastéis de Belém®

HOST COMMITTEE



Thaís França



João Carvalho



Daniel Malet
Calvo



Líliana Azevedo



Raquel Matias

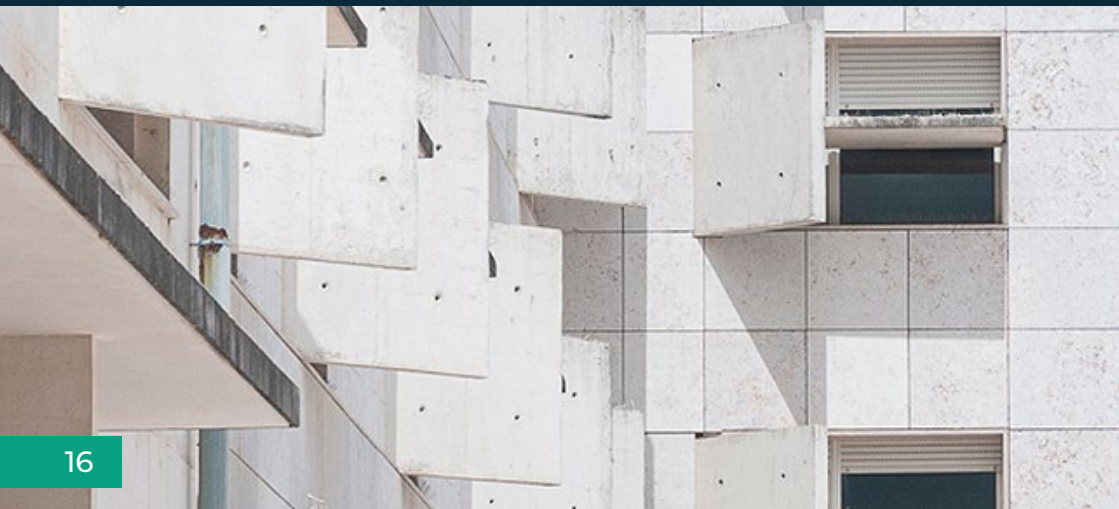


Simone Castellani



Sofia Gaspar

CIES-Iscte
Centre for Research and Studies in Sociology
from Iscte-University Institute of Lisbon



SCIENTIFIC COMMITTEE

Daniela Vintila

Network Office - IMISCOE

Joseph K. Teye

University of Ghana

Eleonore Kofman

Middlesex University London

Karen O'Reilly

Loughborough University

Gianni D'Amato

Université de Neuchâtel

Leila Hadj Abdou

European University Institute

Jean-Michel Lafleur

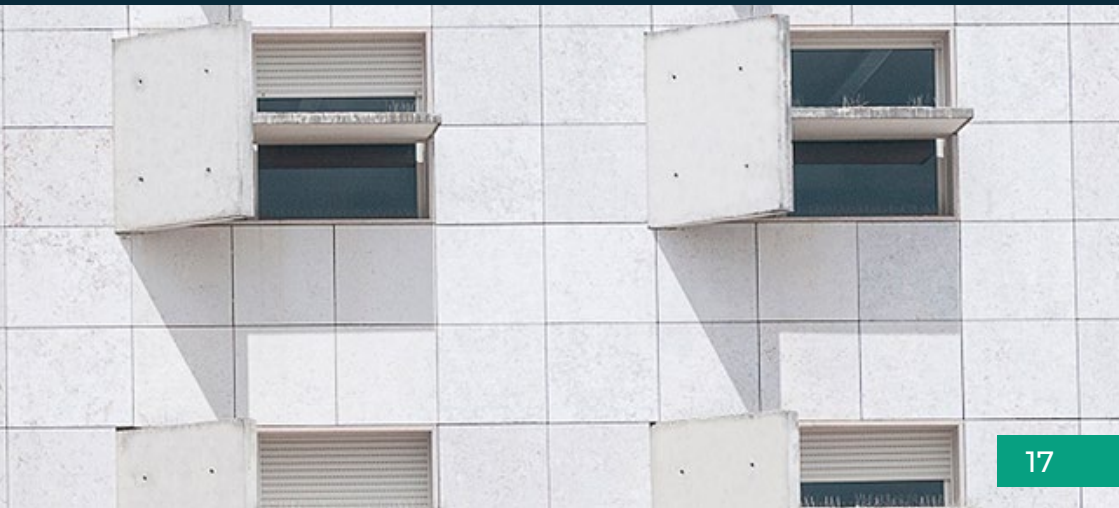
Network Office - IMISCOE

Marco Martiniello

University of Liege

João Carvalho

CIES-Iscte

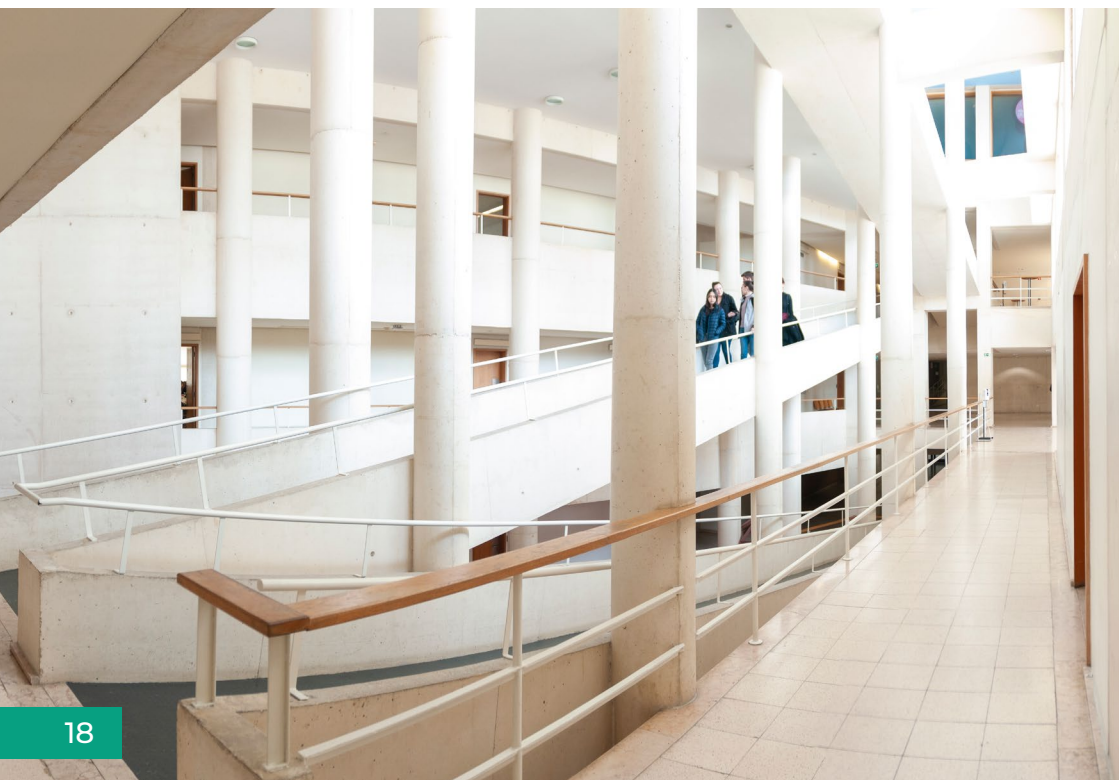


CONFERENCE VENUE

The main campus of the Iscte - University Institute of Lisbon is located very near Entrecampos and is composed of four buildings, two of which were distinguished with the Valmor Architecture Prize. The buildings are fully adapted to the needs of physically disabled users and easily approached from the city centre.

The conference will be organised in a hybrid format, with the majority of sessions taking place on-site in the Building 2 of Iscte along with several online sessions.

Furthermore, a number of side events will take place in and around Lisbon, a vibrant city that effortlessly blends traditional heritage, with striking modernism creating a city of contrasts and a pure delight to discover at each step.





WI FI

For those who are not able to connect to eduroam during the conference, please use our guest internet - you can find the login and password at the back of your conference badge and at the registration stand.

To activate Wi-Fi access:

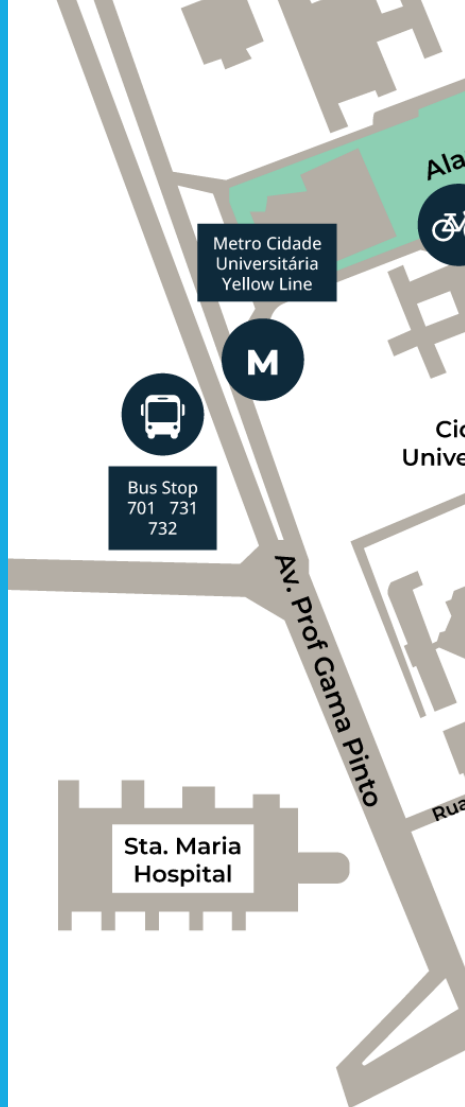
1. Connect to the **Eventos1 Guest Access** network
2. Insert the code **Iscte-iul2024**

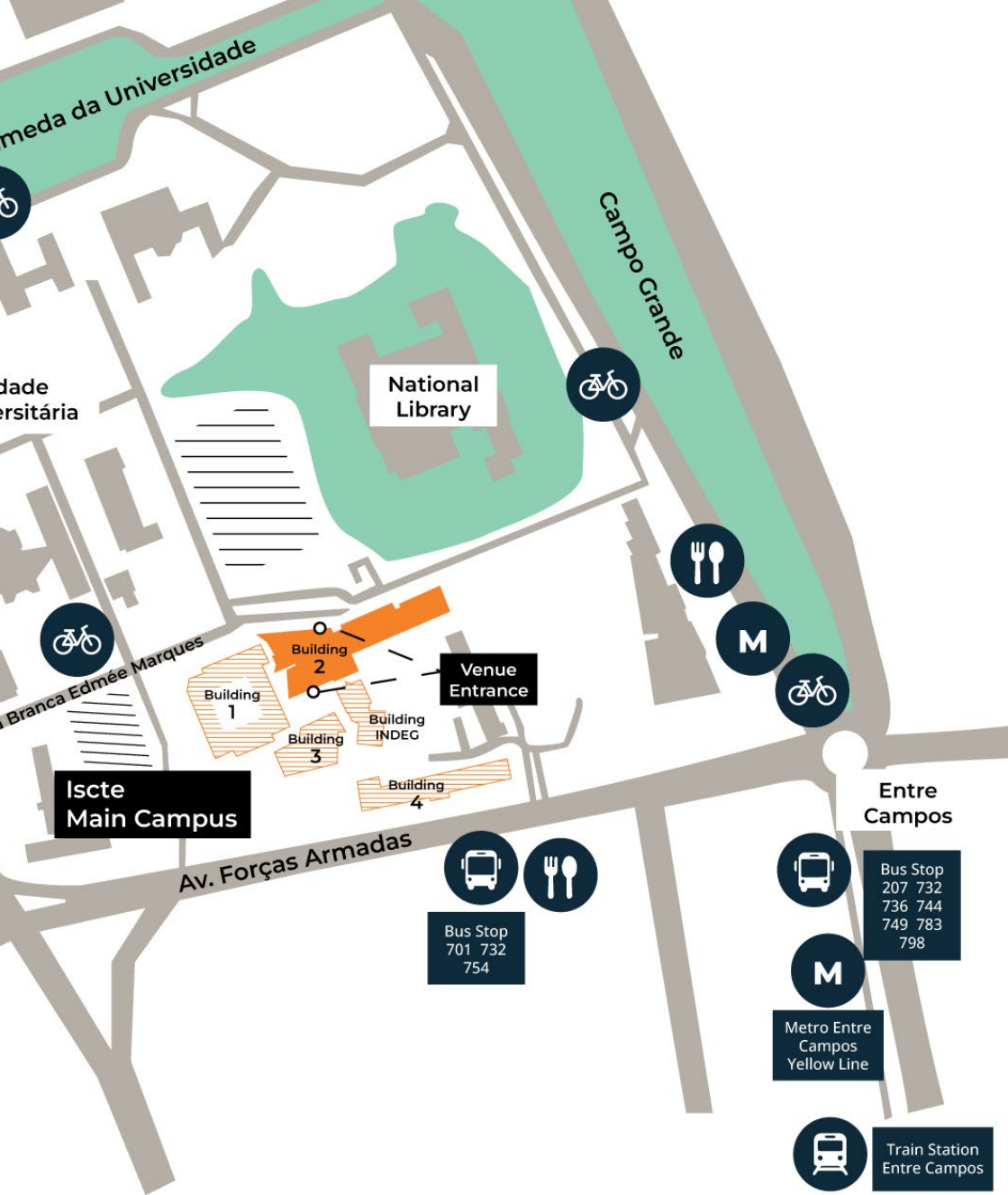
The authorization should be enough to ensure Wi-Fi access for the duration of the whole conference.

VENUE

The conference takes place at the Building 2 of the main campus of Iscte - University Institute of Lisbon

Note: entrance for registration from Branca Edmeé Marques Street





meda da Universidade

idade
rsitária

National
Library

Campo Grande

Branca Edmée Marques

Iscte
Main Campus

Av. Forças Armadas

Building 1

Building 2

Building 3

Building 4

Venue
Entrance

Building
INDEC

Entre
Campos

Bus Stop
701 732
754

Bus Stop
207 732
736 744
749 783
798

Metro Entre
Campos
Yellow Line

Train Station
Entre Campos



Rua Branca
Edmée Marques

Av. Forças Armadas

With more than 14,000 students, 328 professors, 467 researchers involved in R&D and more than 300 non-teaching staff, Iscte is proud to be one of the most dynamic and innovative universities in the country.

Iscte Campus

1

Building 1

Cafeteria
Print Shop
Book Shop

2

Building 2

IMISCOE Main Venue
Library
Grand Auditorium
Cafeteria
Canteen
Laboratories

3

Building 3

Clube Iscte

4

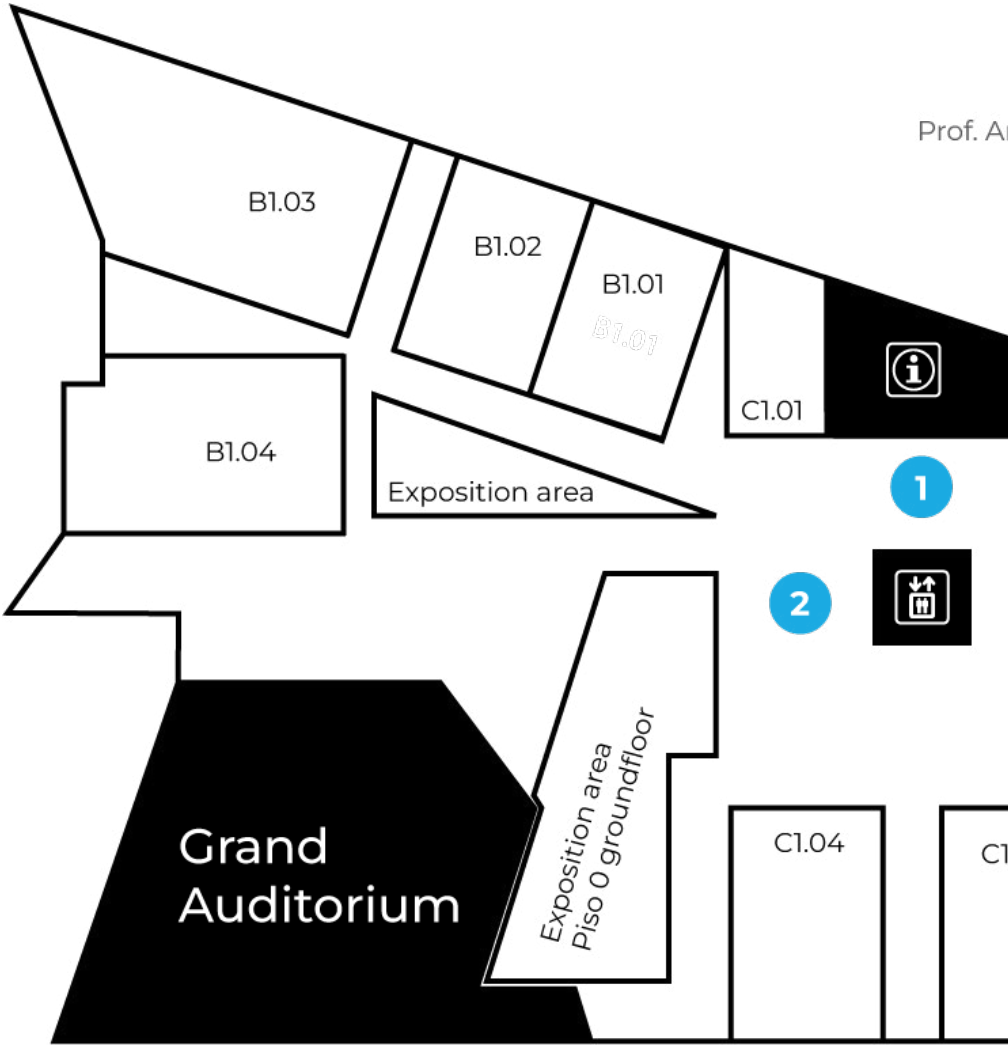
Building 4

Research Units
Observatories
Laboratories
PhD

5

INDEG Building

Iscte-Executive Education
Restaurant

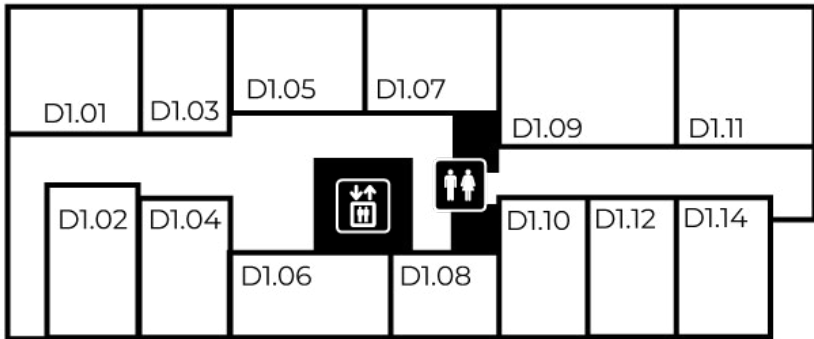


Enríbal Bettencourt Street

Entrance

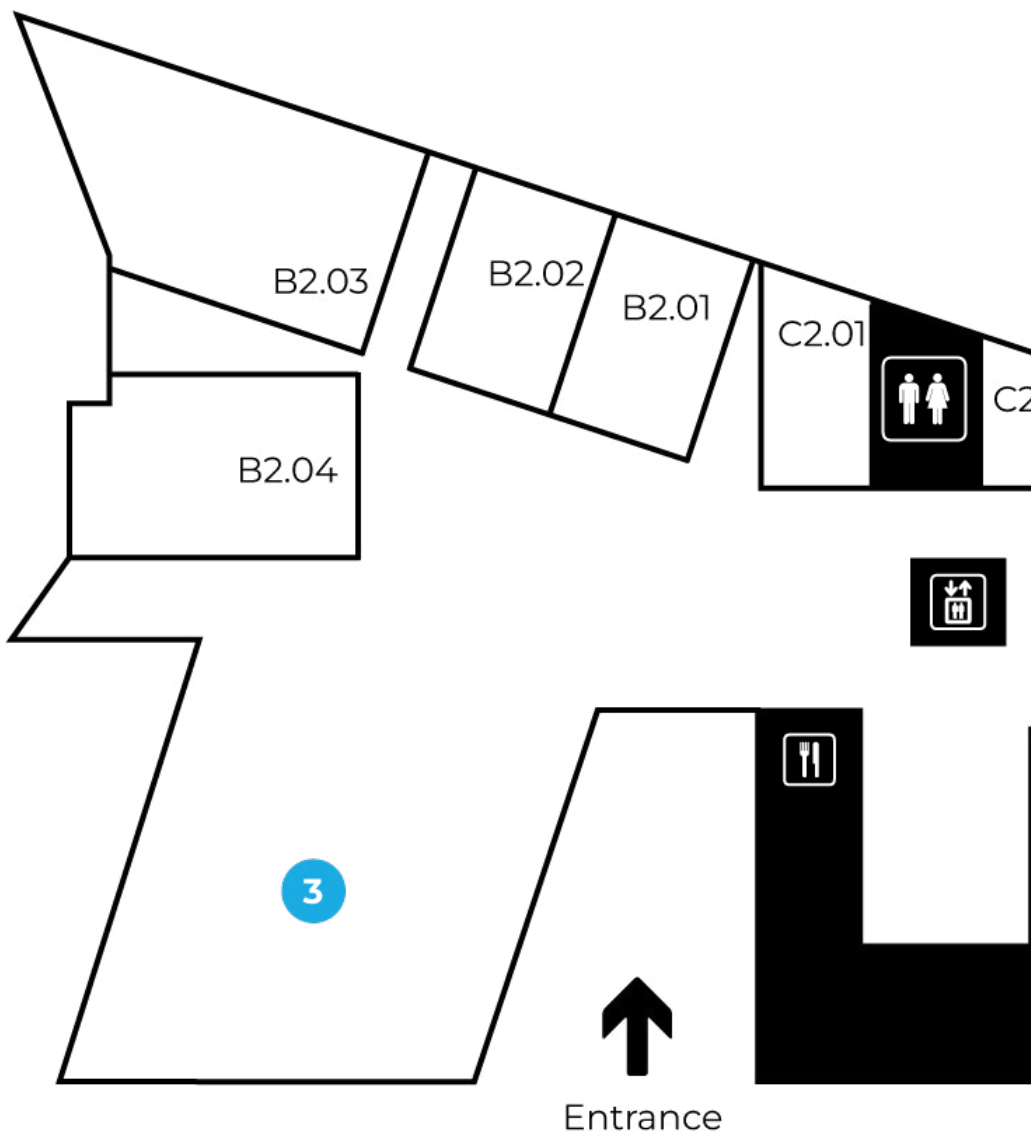


Piso 1
1st floor

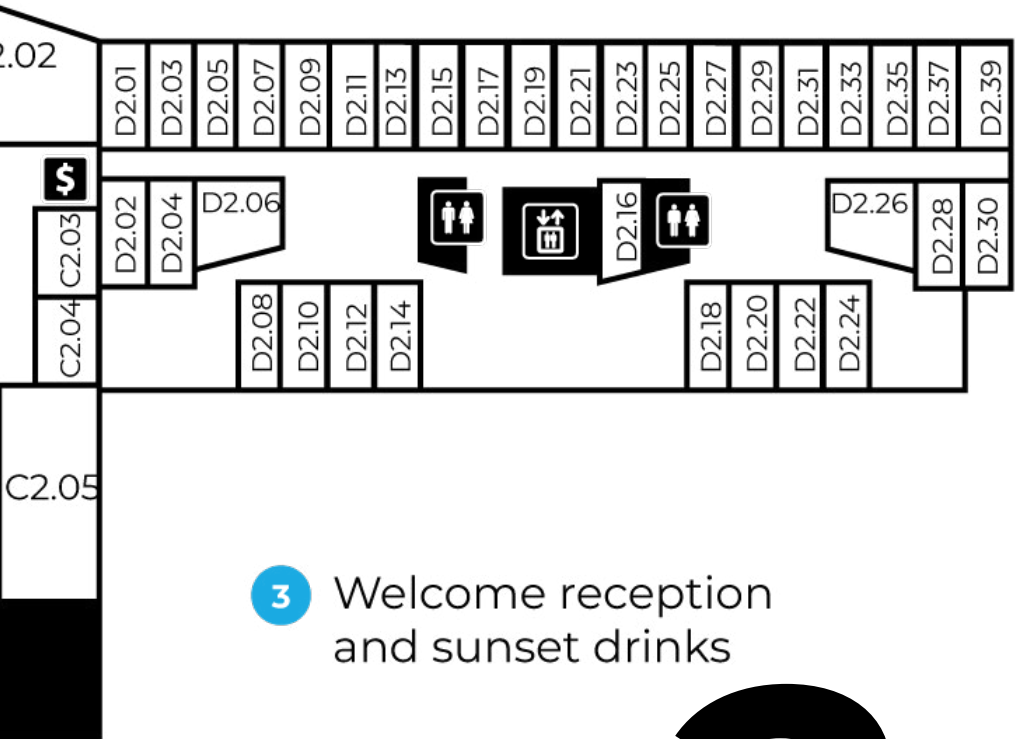


- 1 Registration Desk
- 2 Coffee and Lunch Stations



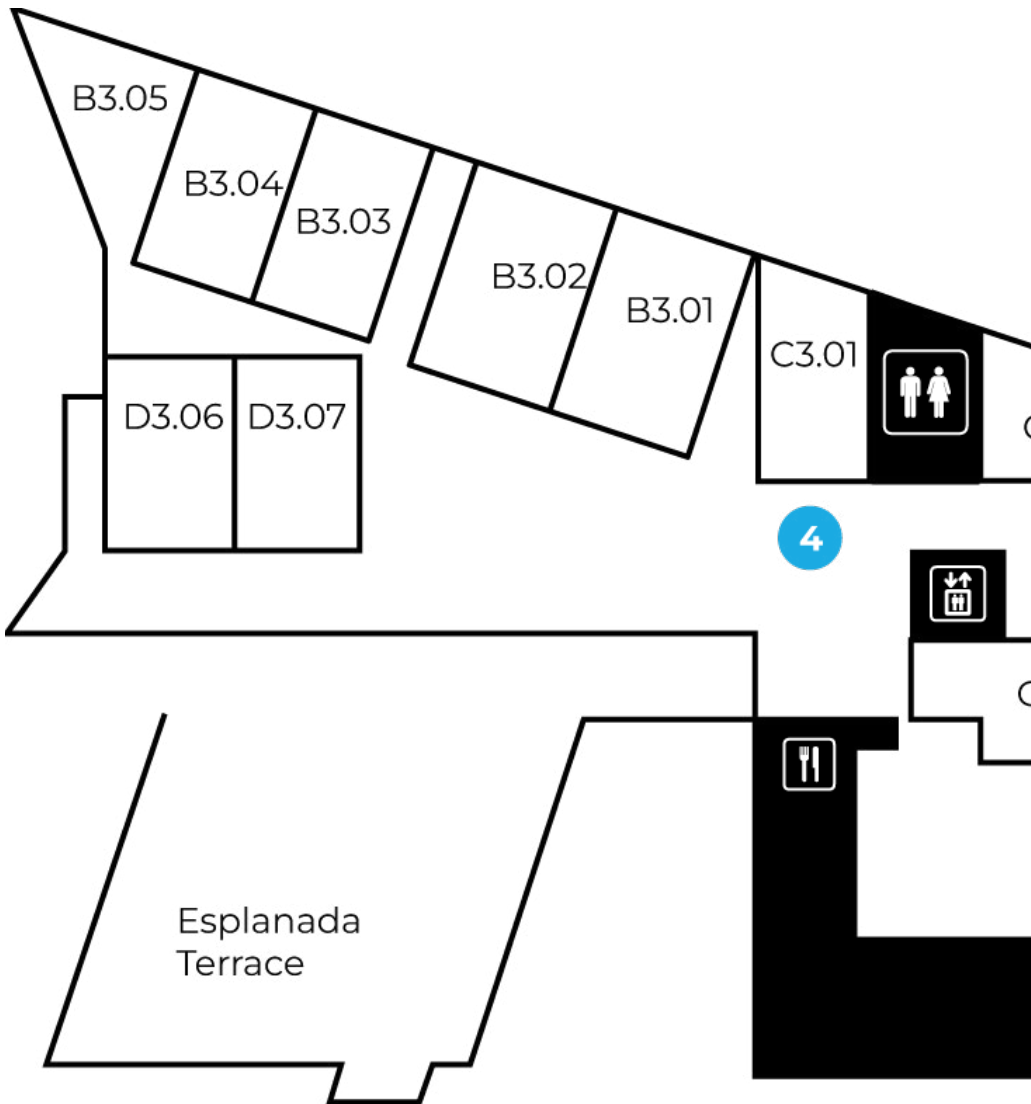


Piso 2 2nd floor

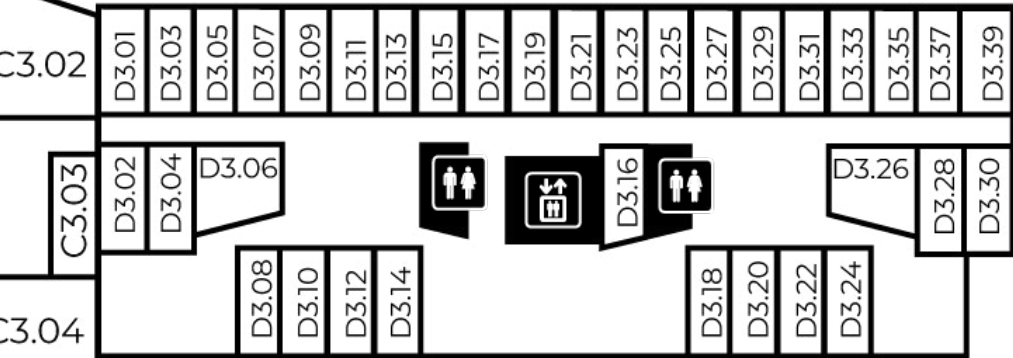


- 3 Welcome reception and sunset drinks

2



Piso 3
3rd floor



4 Coffee and Lunch Stations

3

 BIBLIOTECA
ISCTE

Library

C4.01



5

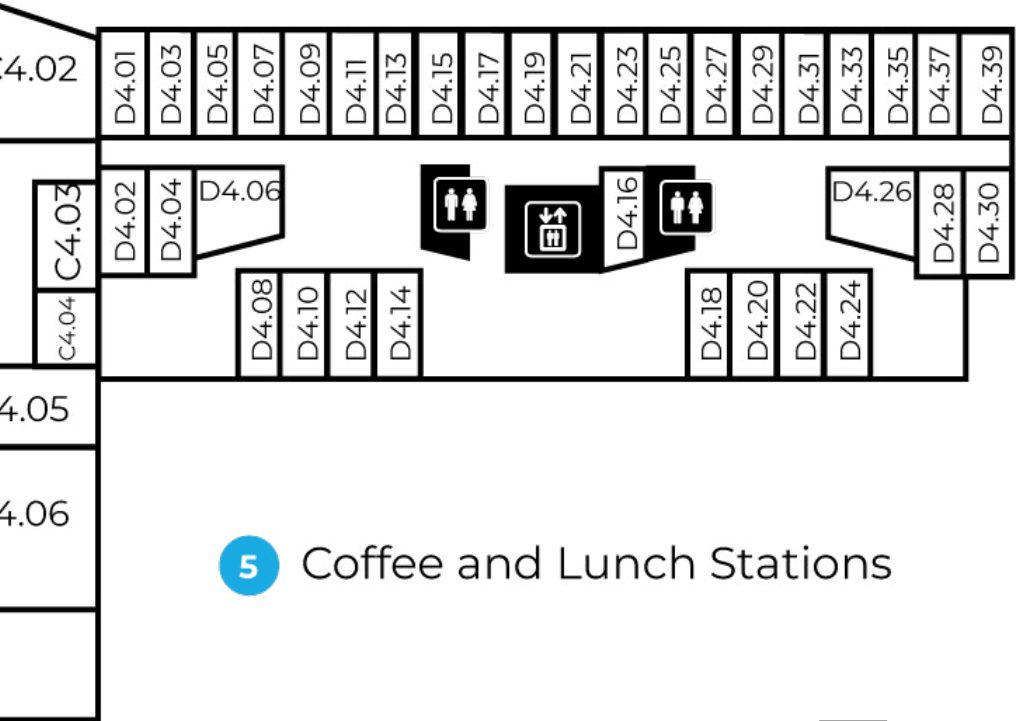
Livraria
Bookshop



C4.08

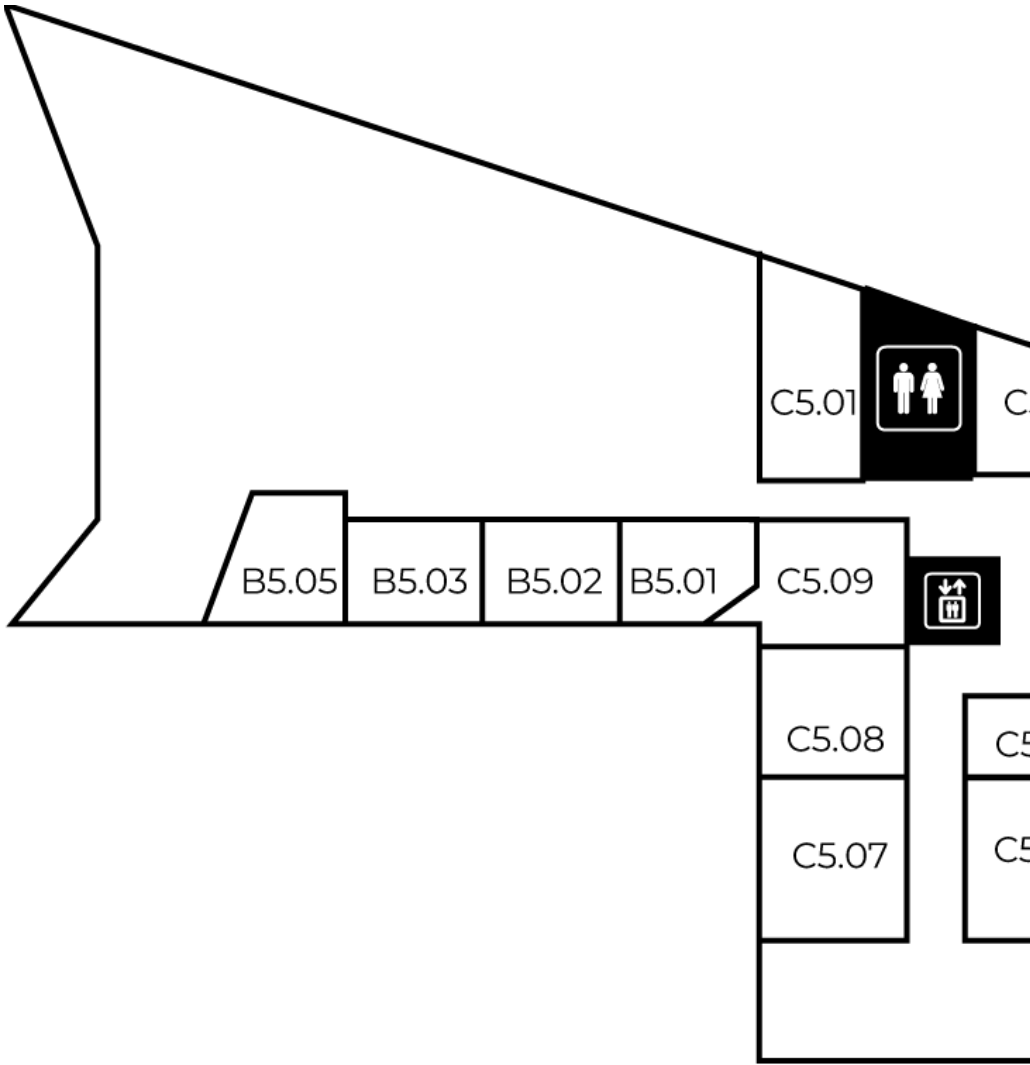
C4.07

Piso 4 4th floor

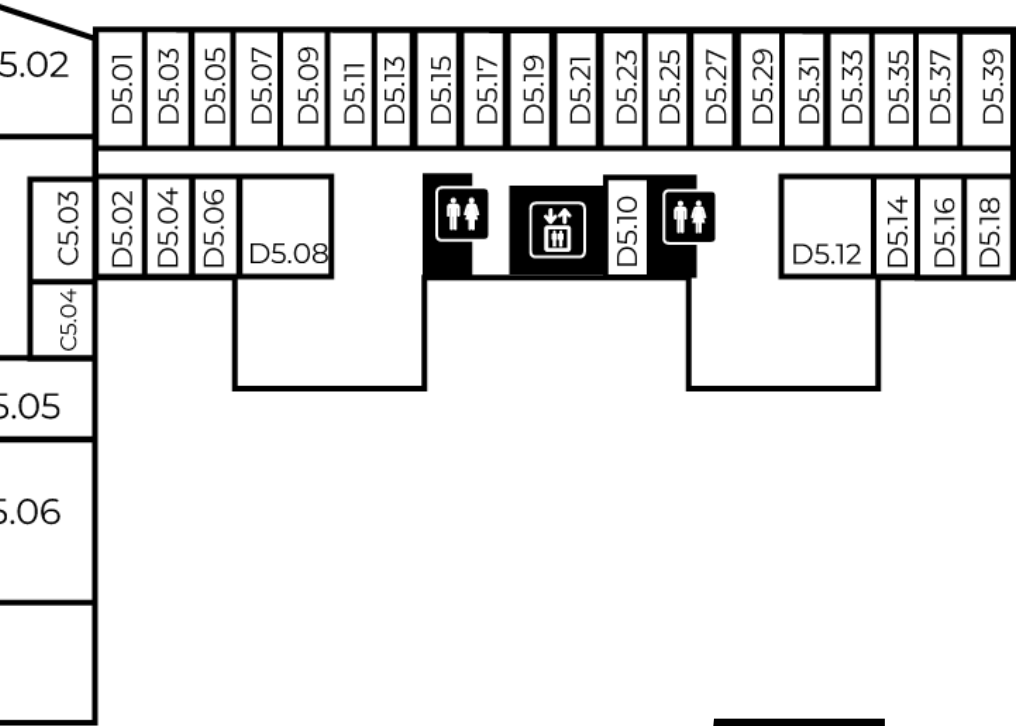


5 Coffee and Lunch Stations

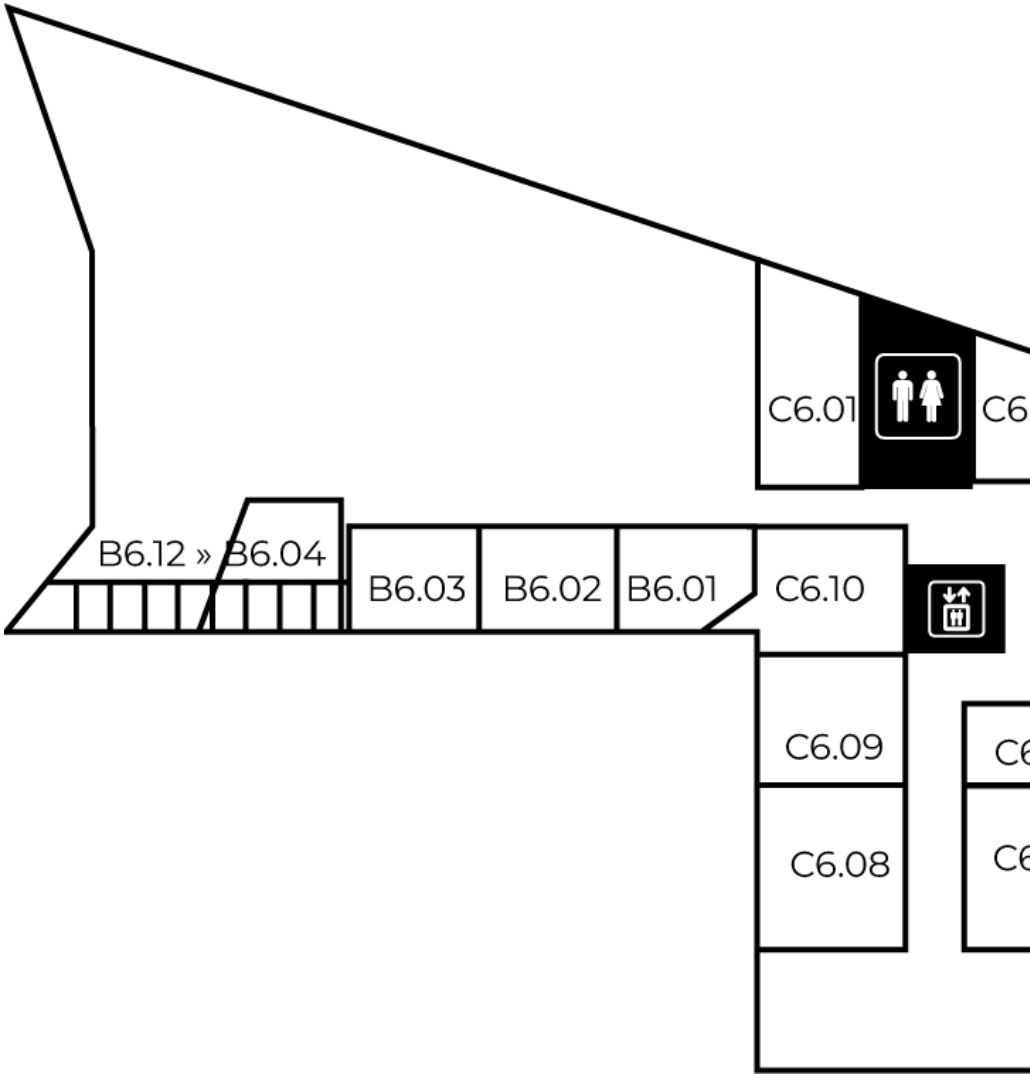
4



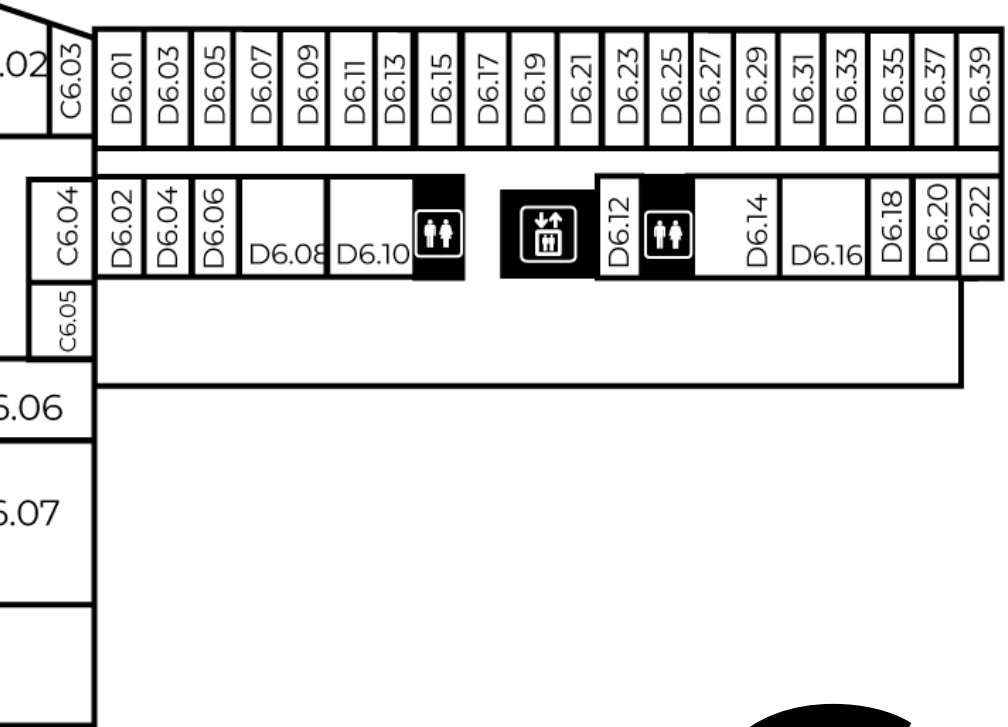
Piso 5
5th floor



5



Piso 6 6th floor



6

CODE OF CONDUCT

The logo for IMISCOE, consisting of the letters 'IMISCOE' in a bold, white, sans-serif font, centered within a solid blue rectangular background.

IMISCOE

Consolidated version, 4th of April 2024

Why do we need a Code of Conduct?

IMISCOE is a research network with a variety of activities, including the organisation of events, training, and the support of research and publications. This Code of Conduct aims to make sure that everyone involved in IMISCOE activities can work in a safe and respectful environment. To promote such environment, IMISCOE may adopt additional documentation to accompany this Code of Conduct.

With this Code of Conduct, IMISCOE seeks to prevent harassment and discrimination¹ of anyone involved in IMISCOE activities and to create a due course of action for situations where anyone may have experienced harassment or discrimination in the context of the network activities. The purpose of the Code of Conduct is to promote behaviour and exchanges in the network that:

- Respect the dignity, individuality, and diversity of the people with whom they are in contact, whether in-person or online.
- Recognise and respect academic freedom in engaging in research, dialogue and other forms of exchange amongst colleagues and participants in IMISCOE activities.
- Treat people with respect and understanding.
- Do not discriminate or condone direct or indirect discrimination on any grounds, including but not limited to sex, race, colour, ethnic or social origin, genetic features, language, religion or belief, political or any other opinion, membership of a national minority, property, birth, disability, age or sexual orientation.
- Promote equality of opportunity and inclusion.
- Create an environment free from harassment, bullying or intimidation, and where possible remove physical and other barriers to participation.

1 In line with EU Charter of Fundamental Rights and the EU directives, this Code of Conduct refers to discrimination as either direct or indirect. Direct discrimination consists of treating someone differently solely because of their specific characteristics. Indirect discrimination refers to a rule or practice which seems neutral but in fact has a particularly disadvantageous impact upon a person or a group of persons having a specific characteristic. Harassment is a form of discrimination. The unwanted conduct can take different forms, from verbal or written comments, gestures or behaviour, but it has to be serious enough to create an intimidating, humiliating or offensive environment. See also: https://ec.europa.eu/info/aid-development-cooperation-fundamentalrights/your-rights-eu/know-your-rights/equality/non-discrimination_en

To what and to whom does the Code of Conduct apply?

This Code of Conduct applies to all actions and speech/comments of individual Members² and Member Institutes³ of IMISCOE in the context of activities of the Research Network. This includes IMISCOE Spring and Annual Conferences, training events (PhD schools, events organised by the PhD Network and the PhD Academy, etc.), meetings and events of Executive or Standing Committees within the network, as well as meetings of the Executive Board or Board of Directors. The Code of Conduct gives guidelines for respectful behaviour and interactions in these activities as well as defining unacceptable behaviour and offering a course of action in cases of unacceptable behaviour. The Code of Conduct shall apply equally to face-to-face as well as online and hybrid activities. All IMISCOE Member Institutes consent to the Code of Conduct as referred to in the IMISCOE Consortium Agreement, and all individual Members consent to the Code of Conduct as part of their individual membership. Participants in events, such as IMISCOE conferences, shall also consent to the Code of Conduct as part of the conference registration procedure. This Code of Conduct gives consequence to Article 10(1v) of the IMISCOE Consortium Agreement.

The Code of Conduct does not apply to events that are exclusively organised by IMISCOE members but which are advertised on IMISCOE webpages. It also does not cover events that are co-badged by IMISCOE but are not directly organised by Standing Committees or members as part of IMISCOE activity. However, the network governing bodies will encourage institutional and individual members of IMISCOE to apply the principles of this Code of Conduct when organising such events.

The Code of Conduct does also not apply to views expressed directly in relation to the contents of research, presentations, and in academic discussions: the intention is not to restrict intellectual freedom in engaging in research, discussion, and dissemination of ideas, however contentious.

- 2 According to the IMISCOE Consortium Agreement, a Member means an individual who has paid the annual individual membership fee and signed the code of conduct; individual members are not directly represented in the Board of Directors, but can make themselves heard through the Vice Chair of the Board of Directors.
- 3 According to the IMISCOE Consortium Agreement, a Member Institute means a party which has signed the Agreement. From the moment an organisation expresses interest in joining the Network, until they sign the agreement, they are considered a Member-Elect.

What is considered respectful behaviour?

Respectful behaviour is behaviour that helps to create an open, safe, and inclusive environment for activities and exchanges. This includes behaviour that:

- Enables all participants to constructively criticize the substance of each other's work. In promoting our ideas, each one will make every reasonable effort to minimise the risks of any harm arising for any person. Each one will be aware that some academic opinions and arguments may cause offence to some people but that this is not, of itself, a sufficient reason not to express those opinions and arguments. Each one will, nevertheless, be sensitive to the views of others and will present its views in a reasonable and thoughtful manner.
- Allows everyone to participate in a way that makes everyone feel safe and respected.
- Strives, individually and collectively, to increase participation of under-represented groups, especially racialised groups, in accordance with Article 8 of the IMISCOE Consortium Agreement.
- Makes sure that activities reflect core values in terms of inclusivity along a variety of diversities, including but not limited to sex, race, colour, ethnic or social origin, genetic features, language, religion or belief, political or any other opinion, membership of a national minority, property, birth, disability, age or sexual orientation.
- Ensures that everyone is aware of and feels safe to raise concerns about whether the environment is truly open, safe, and inclusive.
- Pro-actively assists people who find themselves in a situation of potential harm.

What is considered unacceptable behaviour?

Unacceptable behaviour is any behaviour (actions/comments) that directly or indirectly harms another person or creates an unsafe or hostile environment for any person. This includes:

- Inappropriate actions or comments (speech) concerning a person's background, including but not limited to a person's race, gender, sexuality, ethnicity, or any other aspect.
- Any form of racism, discrimination, sexual harassment, intimidation, or any form of unwelcome solicitation of emotional or physical intimacy.

- Inciting or spreading hatred or violence.
- Using ones position or authority in a way that is considered inappropriate.
- Inappropriate photography, recording, or stalking.
- Advocacy of, or encouragement of any of the above behaviours.

What is the procedure for resolving complaints?

It is important that there is a clear and easily accessible procedure for persons who feel they have experienced or witnessed unacceptable behaviour and want to approach to inform about it, report it, and/or call for appropriate actions. The Vice Chair of the Board of Directors, with the support of the IMISCOE Network Office, will make sure that such an appropriate procedure is in place, and that trustees are appointed accordingly.

For every IMISCOE event, there will be a Trustee who is clearly announced in documentation or on the website. The Trustee can be a person from the onference organizing committee, the board of a Standing or Executive Committee, etc. All messages to and talks with the Trustee will be fully confidential. Trustees will be available for a private conversation or for receiving reports of any disrespectful behaviour of harassment during events. They can also advise on appropriate subsequent actions. Anonymity must be ensured throughout the entire process unless both parties consent to the disclosure of anonymity to the other part.

The organizing committees of the IMISCOE Annual Conference, of the Spring Conference, and of the PhD School shall designate two Trustees (at least one of whom must be a woman) for each of these events. For all other events organised by IMISCOE Executive and Standing Committees, there will be one Trustee assigned for each event. If the person reported is someone from the hosting organization/committee of an IMISCOE event, the report can be made directly to the Vice-chair of the Board of Directors. For any internal meetings of IMISCOE governance bodies (including meetings of the Board of Directors, the Executive Board, Standing and Executive Committees, etc.) any reports on unacceptable behaviour shall be made directly to the Vice-chair of the Board of Directors and/or to the Network Office.

As a complement to Article 10 of the IMISCOE Consortium Agreement on Defaults and Remedies, this Code of Conduct offers two routes of action for those who feel they have experienced unacceptable behaviour:

1. Talk to a Trustee and ask for informal resolution. Once the Trustees have a private conversation or receive a complaint, Trustees and the Vice Chair of the Board of Directors will approach the person against whom the complaint was made. If the process is brief and the individuals involved can meet separately in person with one of the Trustees and the Vice-chair, it is preferable to handle it that way. If the event is ending soon or has already ended and there is no opportunity for such a meeting, communication can be conducted through a video call or via email. All members are encouraged to raise any issues and grievances as early as possible, before they become a major problem. The mediation process may be concluded if the offending party acknowledges responsibility for their misconduct and/or offers an apology to the reporting party (if accepted).
2. Report unacceptable behaviour and ask for formal resolution. Any person can formally report unacceptable behaviour to the Trustee by filing a formal complaint. In this case, the identity of the complainant needs to be revealed at least to the Trustee, but should be processed further in confidentiality, only between the parties involved in the complaint and its subsequent inquiry. The Trustee will attempt to settle the complaint with involvement by the Vice Chair of the Board of Directors. The Vice Chair of the Board of Directors and the Trustee will then jointly examine the complaint; notify the person or organisation against whom the complaint is directed and provide them with an opportunity, in a reasonable time period, to respond to the complaint; set up an inquiry into what happened that ensures the right of all parties to be heard and informed; and identify appropriate action. A formal complaint and the result of the inquiry needs to be reported to the IMISCOE Executive Board and to the IMISCOE Coordinator. The IMISCOE Executive Board and the Vice-Chair of the Board of Directors can ultimately take sanctions in response to complaints, which includes giving a person a warning, informing a person's institute of the complaint, and suspending the individual membership of a person. Once a year, the IMISCOE Coordinator will need to report to the IMISCOE Board of Directors what has been done in response to formal complaints.

Trustees

Beatriz Padilla padillab@usf.edu | Saleh Seid Adem saleh.seid@amu.edu.et

Information for Chairs at the IMISCOE Conference

The Chairs have an important role at the IMISCOE conference, contributing to facilitate important research exchange on migration themes – and as an integral part of this, making conference participation an inclusive and safe experience for everyone.

We would therefore like to draw the attention of all Chairs to some important points:

- You can find the details of the session that you are chairing (including the room number and/or the Webex link) after logging in on the conference portal. Your session will also be automatically marked under the block “My sessions”.
- Please contact all presenters in the session you’re chairing in advance. Please note that it is your responsibility to follow-up with your session participants. All email addresses are available in the program portal – click on participants’ names. Please give concrete instructions about length of time for each presentation in advance, to allow presenters to prepare adequately (for instance, if your session has 3 papers, the timing is naturally different than if there are 5 papers).
- If the session has a discussant, please agree with them in advance about their role and importantly time-use. If the session does not have a discussant, you can either encourage paper givers to comment on each other’s presentations (for instance, via a pairing system in which each paper giver will provide feedback to the presentation of another colleague in the session) or open the Q&A with the general audience after the paper presentations. As chair, you can also ask questions or make comments regarding the papers during the Q&A, if you wish.
- Please make sure that you prepare your session in such a way that there is some time left for the general Q&A with the audience and that paper givers will have the opportunity to react to the comments received.



- Please make sure you know which is the physical room in Lisbon and/or the Webex link allocated to your session well in advance of your session's starting time. This information will be upload directly on the conference portal, so please make sure to check it regularly.
- Please go to the on-site and/or virtual room assigned to your session 10 mins before your session should start. Please ensure that the on-site and/or virtual equipment is ready for use – and have presenters upload/ screen-share all presentations before the session starts.
- If you are attending a hybrid session and you are on-site, there are computers in each session room at the Iscte-University Institute of Lisbon – with Webex downloaded and tested for use in the hybrid format. The password/login information will be available on a printout in each of the rooms that the conference uses.
- If you are attending a hybrid session and you are online, the conference assistant who will be present in the on-site room allocated to your session in Lisbon will open the computer in that room and the Webex link for online participants to make sure that everything works fine. If you

are participating virtually, please double-check and test that the Webex interface works on your computer, and that the sound works both ways, well in advance of your presentation. Please encourage the participants in your session who will attend online to do the same. A special Drop-In Session will be organized the week before the conference starts, to allow participants joining online to test the Webex functionalities prior to the conference, if they wish (please check the conference portal where the information regarding the date/time of the Drop-in session will appear soon). In addition, a special Online Support Centre will also give assistance during the entire duration of the conference to participants joining via Webex.

- If you are attending a fully online session, just make sure that you follow the suggestions indicated above on how to connect to Webex and test your Webex functions prior to the start of your session.
- On-site assistants will be present in Lisbon to support you for the organization of on-site or hybrid panels, whereas the technical assistants via the Online Support Centre would be able to help you with any technical issues that you may have for fully virtual or hybrid sessions.
- Please always make sure that your session starts on time, allocate time fairly between papers, and end all sessions on time. Plan for transition times.
- Please think carefully through how you will manage in person and/or online presenters – and session participants – in a good way in your session. During the Q&A, if you are attending on-site and chair a hybrid session, please check the Webex chat in case any participants joining online ask questions, raise their hands, etc. If you are attending online in a hybrid session, the assistant who will be present in your session will inform you of any on-site participant has questions or comments during the Q&A. If you are attending a fully virtual session, please make sure that you check the Webex chat yourself in case any participants ask questions, write comments in the chat, raise their hands, etc.
- To ensure the good visibility of your work in the conference program, we strongly advise you to create a profile on the IMISCOE Migration Research Hub, if you do not have one yet: <https://migrationresearch.com>. Also, please do not hesitate to share the information regarding your session on social media, by using the hashtag #IMISCOE2024.
- Please make sure that the session is an inclusive and safe environment for all conference participants.

Being a Chair of a session at the IMISCOE conference is a big responsibility, but it is also an opportunity to make conference participants' experience enjoyable.

We wish you a fruitful and inspiring IMISCOE conference – online or in person in Lisbon!



OPENING PLENARY

Migration as Social Construction: A Reflexive Turn

Tuesday, 2 July 2024 / 18:00 to 20:00 GMT+1
Grand Auditorium Floor 1

This opening plenary session will discuss the social processes through which (some) individuals on the move become socially transformed into migrants, how even some non-mobile individuals (descendants of migrants, for example) become categorized as migrants, and the way some people are categorized as illegal and irregular whilst other mobile citizens evade similar categorizations. The primary objective of the opening plenary session is to establish the context for the conference. In particular, this session, featuring three distinguished scholars from different geographies, seeks to delineate the core aspects the reflexive turn in migration studies.

The opening plenary session, "Migration as Social Construction: A Reflexive Turn" will establish the context for the conference featuring three distinguished scholars from different geographies, who will delineate the core aspects of the reflexive turn in migration studies.

SPEAKERS



**Mary Boatemaa
Setrana**

*University of Ghana,
Ghana*



**Ettore
Recchi**

*Centre for Research on
Social Inequalities, France*



**Anna
Amelina**

*Brandenburg University
of Technology, Germany*

SEMI-PLENARY SESSION 1

Reflexivity and Intersectionality: complexifying the migration debate

Wednesday, 3 July 2024 / 13:15 to 14:45 GMT +1
Grand Auditorium Floor 1

Our first semi-plenary session, “Reflexivity and Intersectionality: complexifying the migration debate”, will explore how the social construction of migration intersects other topics of social research such as gender, class, race and ethnicity, identity, and ideology.

The social construction of migration intersects other topics of social research such as gender, class, race and ethnicity, identity, and ideology. Building upon the intersectional character of migration research, this semi-plenary aim is to contribute to the theoretical understanding and empirical study of the processes of the social construction of migration and their impact on social reality.

SPEAKERS



**Janine
Dahinden**

*University of Neuchâtel,
Switzerland*



**Gioconda
Herrera**

FLACSO, Ecuador



**Emellin
De Oliveira**

*Research Centre
on Law and Society,
Portugal*

SEMI-PLENARY SESSION 2

Reflexivity, discourses and practices: old challenges and new perspectives in the migration field

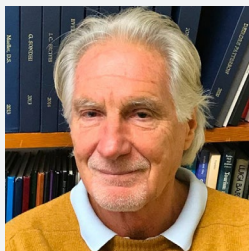
Thursday, 4 July 2024 / 13:15 to 14:15 GMT +1

Grand Auditorium Floor 1

The second semi-plenary, “Reflexivity, discourses and practices: old challenges and new perspectives in the migration field”, aims to discuss how a number of categories, distinctions and hierarchies between citizens and foreigners, nationals and non-nationals, “we” and “others” has been constructed within the migration field.

Building on the ontological and conceptual reflections known as the reflexive turn in current migration research, this semi-plenary aims to discuss how a number of categories, distinctions and hierarchies between citizens and foreigners, nationals and non-nationals, “we” and “others” has been constructed within the migration field and its impact on the academic and policymaking discourses and practices in the field.

SPEAKERS



**Russel
King**

*University of Sussex,
United Kingdom*



**Maruja
Asis**

*Scalabrini Migration
Center, The Philippines*

CLOSING PLENARY

Reflexivity and migration policies: building categories, borders and subjects

Friday, 5 July 2024 / 12:30 to 14:30 GMT +1

Grand Auditorium Floor 1

Finally, the closing-plenary, “Reflexivity and migration policies: building categories, borders and subjects” aims to explore the dynamic relationship between migrants, migration policies, the public discourse surrounding this topic, and the experiences and actions of migrants within host societies.

The formation of nation-states was an uneven process, occurring as it did, at a time when the inequalities and inequities of colonialism and imperialism were played out through varieties of national and local bordering practices. In light of this, this close-plenary aims to explore the dynamic relationship between migrants, migration policies, the public discourse surrounding this topic, and the experiences and actions of migrants within host societies.

SPEAKERS



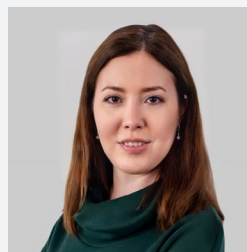
**Ines
Raimundo**

*Universidade Eduardo
Mondlane, Mozambique*



**Eduardo
Domenech**

*CONICET,
Argentina*



**Olena
Shelest-Szumilas**

*Poznan University of
Economics and Business,
Poland*

OVERALL PROGRAM

Day 1 - Tuesday, July 2nd

MORNING

08:30 - 12:00 IMISCOE PhD Network Activities
(PhD Network Assembly, PhD workshops)

09:00 - 12:00 Board of Directors meeting

AFTERNOON

12:00 - 13:00 Registration

13:00 - 14:30 Panel slot I

14:30 - 14:50 Break

14:50 - 16:20 Panel slot II

16:20 - 16:40 Break

16:40 - 17:40 Meetings of the Standing Committees and Executive Committees part I

EVENING

18:00 - 20:00 Opening plenary [+info](#)

20:15 Welcome Reception at the Iscte Campus

Day 2 - Wednesday, July 3rd

MORNING

09:00 - 10:30 Panel slot III

10:30 - 10:50 Break

10:50 - 12:20 Panel slot IV

AFTERNOON

12:20 - 13:15 Lunch

13:15 - 14:45 Semi-plenary I [+info](#)

14:50 - 16:20 Panel slot V

16:20 - 16:40 Break

16:40 - 18:10 Panel slot VI

EVENING

18:30 - 19:30 Meetings of the Standing and Executive Committees part II

Day 3 - Thursday, July 4th

MORNING

09:00 - 10:30 Panel slot VII

10:30 - 10:50 Break

10:50 - 12:20 Panel slot VIII

AFTERNOON

12:20 - 13:15 Lunch

13:15 - 14:15 Semi-plenary II [+info](#)

14:15 - 15:45 Panel slot IX

15:45 - 16:00 Break

16:00 - 17:30 Panel slot X

17:30 - 18:30 Maria Ioannis Baganha Dissertation Award Ceremony

EVENING

18:30 - 19:30 Meetings of the Standing and Executive Committees part III

18:45 - 20:00 Sunset drinks at the Iscte Campus

Day4 - Friday, July 5th

MORNING

09:00 - 10:30 Panel slot XI

10:30 - 10:50 Break

10:50 - 12:20 Panel slot XII

12:30 - 14:30 Closing plenary [+ info](#)
& Rinus Penninx Best Paper Award Ceremony



DETAILED PROGRAM

Tuesday, 2 July / 13:00 - 14:30

Session	Panel Title	Mode	Room
1	Migration and Climate Change: Research, Science Communication, Impacts and Governance	<i>Hybrid</i>	C6.07
2	The Common European Asylum System. A never-ending story of reform and conflict?	<i>Hybrid</i>	C6.02
3	Theorizing migration (cap)abilities: theoretical and methodological reflections on an abstract notion	<i>Hybrid</i>	C6.08
4	A new face of forced migration? Onward migration and return considerations among Ukrainian refugees in Europe.	<i>Hybrid</i>	C6.01
5	Home as metaphor: Exploring emotional, material and heuristic dimensions of migration 1	<i>Hybrid</i>	C4.06
6	Survey data in migration research	<i>Hybrid</i>	C6.10
7	Revisiting the social constructs of 'essentialism' and 'irregularization' of migrant workers in European Farm to Fork sectors	<i>Onsite</i>	C5.05
8	Engendering welcoming spaces for migrant emplacement and inclusive development in 'left behind' areas	<i>Onsite</i>	C2.02
9	Towards decolonial futurities: on reimagining the university	<i>Onsite</i>	C2.01
10	Reflexivity as Critique? The Politics of Knowledge Production in Migration Studies	<i>Onsite</i>	C3.01
11	Creative and Participatory Migration Research: Towards a Reflexive Approach	<i>Onsite</i>	Aud C1.03
12	Governing Migration Across Borders: Actors and Processes of International Cooperation and Migration Diplomacy	<i>Onsite</i>	Aud C1.04
13	New perspectives on European migration: colonialism, the state and control	<i>Onsite</i>	B2.01
14	New Urban Inclusion Policies	<i>Onsite</i>	C4.02
15	Gulf Migration Research from a Decolonial and Intersectional Perspective	<i>Onsite</i>	C5.02

16	Developments in asylum and refugee policy	<i>Onsite</i>	B2.02
17	SC RACED Special Session: Understanding of race and racial categories in the European context	<i>Onsite</i>	C4.01
18	What we talk about when we talk about race: A reflexive discussion on race in migration studies	<i>Onsite</i>	C4.08
19	A reflexive turn in humanitarian studies? Rethinking the construction of migration, difference and race beyond mobility crisis	<i>Online</i>	Webex
20	Intermigrant dynamics: Practices of racism and solidarity - part I	<i>Online</i>	Webex
21	Mutual relations between migration and digital technologies	<i>Online</i>	Webex
22	Diversities in studies at the intersection of ageing and migration	<i>Online</i>	Webex
23	Migration, policies and migrant's experiences	<i>Online</i>	Webex
24	Migrants' economic integration and entrepreneurship	<i>Online</i>	Webex
25	Migration, families, and children	<i>Online</i>	Webex

Tuesday, 2 July / 14:50 - 16:20

Session	Panel Title	Mode	Room
26	Volunteering and Precarious Citizenship: Negotiations of Labour, Care, Justice and Social Reproduction	<i>Hybrid</i>	C6.07
27	The discursive production of irregularity for migrants and racialized communities in Europe	<i>Hybrid</i>	C6.02
28	Transnational care and well-being of family members across generations, contexts and countries: comparative approaches	<i>Hybrid</i>	C6.08
29	The construction of physical and non-physical borders	<i>Hybrid</i>	C6.01
30	Home as metaphor: Exploring emotional, material and heuristic dimensions of migration (2)	<i>Hybrid</i>	C4.06
31	Immigrants and participatory democracy. Practices and policies of engagement in European cities.	<i>Hybrid</i>	C6.10

32	Collaborative Migration Research between precarious employment and short-term competitive funding	<i>Onsite</i>	C5.05
33	Envisioning just mobile work in European peripheralized spaces through a translocal and intersectional lens: An explorative participatory theatre method	<i>Onsite</i>	C2.02
34	From the “peripheries” to Europe: how insights from “elsewhere” can inform Western-centric migration studies	<i>Onsite</i>	C2.01
35	IMISCOE on Diversity, Equality and Inclusion - is it possible?	<i>Onsite</i>	C3.01
36	Intergenerational care, intersecting inequalities and wellbeing among transnational families in Europe	<i>Onsite</i>	Aud C1.03
37	SC Meth@Mig Special Session: Reflexivity with a Southern Face: Migration Research Methods in the Global South	<i>Onsite</i>	Aud C1.04
38	Managing migration: Between standardized categories and cultural meanings	<i>Onsite</i>	B2.01
39	Ageing, migration and the left behind	<i>Onsite</i>	C4.02
40	Managing migration and labour market inclusion from above	<i>Onsite</i>	C5.02
41	‘Placing’ return migration: intersectionalities of gender, age, generation and class, Part 1	<i>Onsite</i>	B2.02
42	Global fair skill flows, skill recognition, talent partnerships and migration skill corridors	<i>Onsite</i>	C4.01
43	Process of drawing boundaries	<i>Onsite</i>	C4.08
44	The Ethics and Methods of Migrant Trajectory Research	<i>Online</i>	Webex
45	Mapping refugee and migrant children’s integration in Europe	<i>Online</i>	Webex
46	Migration as a Social Construct: Anticipatory Methods and Policy Responses	<i>Online</i>	Webex
47	Refugee Inclusion in Education	<i>Online</i>	Webex
48	Border control and return policies	<i>Online</i>	Webex
49	Intersectional approaches to gender and migration	<i>Online</i>	Webex
50	Return migration and reintegration	<i>Online</i>	Webex
51	Methodological and Ethical Implications of Researching Transactional Sex	<i>Online</i>	Webex

Wednesday, 3 July / 09:00 - 10:30

Session	Panel Title	Mode	Room
52	Inner Perspectives of Ukrainian refugees: Ambitions, Determinants, Reasons and Drivers of Migration from Ukraine to the European Union	<i>Hybrid</i>	C6.07
53	Migration Governance in Central and Eastern European Cities Post-2015	<i>Hybrid</i>	C6.02
54	Feminist Migration Futures? The Paradox of a Feminist Migration Policy	<i>Hybrid</i>	C6.08
55	Migration narratives in political debate and policy-making	<i>Hybrid</i>	C6.01
56	Transnational Social Protections (1/2): Mapping Regional Variations	<i>Hybrid</i>	C4.06
57	Intermigrant dynamics: Practices of racism and solidarity - part II	<i>Hybrid</i>	C6.10
58	Urban In/Formalities: Arrival Infrastructures and Newcomers' Access to Resources	<i>Onsite</i>	C5.05
59	Global Student Mobility and Complex Migration Trajectories	<i>Onsite</i>	C2.02
60	Enduring migratory precarity over time and across generations	<i>Onsite</i>	C3.02
61	Music and Antiracist Mobilization in a Global and Comparative Perspective	<i>Onsite</i>	C2.01
62	Book Launch: ›Reflexivities in Migration Studies‹	<i>Onsite</i>	C3.01
63	SC IILME Special Session: The future of research on migrant workers and labour markets	<i>Onsite</i>	Aud C1.03
64	The benefits and risks of new approaches to estimating irregular migration	<i>Onsite</i>	Aud C1.04
65	Political re-socialization, return migration and political change: comparative and reflexive approaches	<i>Onsite</i>	B2.01
66	Exploring the Aging Well Experience of Migrants in Europe	<i>Onsite</i>	C4.02
67	SC MIGCITPOL Special Session: Revisiting Migration Crisis: Ambivalent Adaptation and Policy Innovation in Institutional Responses to Migration Crises across Regions – Publication Workshop	<i>Onsite</i>	C5.02
68	'Placing' return migration: intersectionalities of gender, age, generation and class, Part 2	<i>Onsite</i>	B2.02

69	SC EduSocial Special Session: On working in/against higher education institutions towards equitable, anti-racist horizons (PANEL 1)	Onsite	C4.01
70	Migration research agendas beyond Europe: the state of the art of migration studies in Latin America	Onsite	C4.08
71	The impact of perceptions of race	Onsite	C5.01
72	Migratory Stratifications: A New Perspective for Exploring the Interplay Between Migration Phenomena and Social Transformations.	Online	Webex
73	Unsettling Migration Governance: Navigating Border Regimes Through Shifting Patterns of In/Visibility	Online	Webex
74	Higher Education and Student Mobility	Online	Webex
75	Migration control and practices of actors	Online	Webex
76	Unveiling inequities and resistances in migrants' access to the labour market	Online	Webex
77	Understanding migratory dynamics, experiences, and transformations in urban and rural areas	Online	Webex

Wednesday, 3 July / 10:50 - 12:20

Session	Panel Title	Mode	Room
78	Mobility policies and migration decision-making: exploring their possible link(s) through researchers' reflexivity	Hybrid	C6.07
79	Complexities Unveiled: Navigating Community Sponsorship in Europe's Dynamic Refugee Resettlement Landscape – Panel I (Offline)	Onsite	C6.02
80	SC DIVCULT Special Session: Building belonging by territorial rituals	Hybrid	C6.08
81	SC IILME Special Session: The IILME SC and its future research agenda	Hybrid	C6.01
82	Transnational Social Protections (2/2): Is there a future for national welfare systems?	Hybrid	C4.06
83	Cultural change in postmigrant societies: inputs for reflexive migration research	Onsite	C6.10

84	Roundtable: Methodological plurality and reflexivity in research on return and readmissions	Onsite	C5.05
85	Precarity, irregularity and exploitation: the role of labour migration regimes	Onsite	C2.02
86	Understanding ethno-racial inequalities in access to and experiences of healthcare	Onsite	C3.02
87	The complexities of care mobility in times of social transformations	Onsite	C2.01
88	Notions of “good life” among working Europeans on the move: empirical, theoretical, and methodological perspectives	Onsite	C3.01
89	(Im)mobility in left-behind areas: cross-comparing European projects	Onsite	Aud C1.03
90	Reflecting on mixing methods in migration studies	Onsite	Aud C1.04
91	The making of (ir)regular migration: a multidisciplinary perspective	Onsite	B2.01
92	Moving, Staying, Leaving: On the Interaction of Migration and Social Mobility in Asia, Africa and South America - Part 1	Onsite	C4.02
93	Towards Reflexivity on the Expanding Landscape of Digital and Biometric Technologies at the Intersection of Migration and Border Control (PART 1)	Onsite	C5.02
94	SC MIGPOG Special Session: New complexities and geographies in migration and diversity governance - Part 1	Onsite	B2.02
95	On working in/against higher education institutions towards equitable, anti-racist horizons (PANEL 2)	Onsite	C4.01
96	Entering, Staying and Leaving Politics: Comparative Perspectives on the Careers of Political Representatives of Immigrant Ancestry	Onsite	C4.08
97	SC MIGCITPOL Special Session: A Reflexive View on the Democratic Deficit from Citizenship and Migration Studies	Onsite	C5.01
98	Migratory Stratifications: A New Perspective for Exploring the Interplay Between Migration Phenomena and Social Transformations.	Online	Webex
99	Educational Challenges in Specific Transnational Contexts	Online	Webex
100	The concept of refugee, vulnerability and deservingness	Online	Webex
101	Job (in)security, emotions and migrants' wellbeing	Online	Webex

Wednesday, 3 July / 14:50 - 16:20

Session	Panel Title	Mode	Room
103	Housing Policies and Non-Voluntary Mobilities	<i>Hybrid</i>	C6.07
104	Complexities Unveiled: Navigating Community Sponsorship in Europe's Dynamic Refugee Resettlement Landscape – Panel II (Online)	<i>Hybrid</i>	C6.02
105	SC Reflexivities Special Session: Decentering migration studies (Part 1)	<i>Hybrid</i>	C6.08
106	SC MITRA Special Session: From pre-migration to post-migration aspirations: Understanding the complex set of factors influencing migrant decision making	<i>Onsite</i>	C6.01
107	Transition of diaspora policies in EU post-accesion Central European countries	<i>Hybrid</i>	C4.06
108	Doing Migration Research on the Move: The Eu-MIGS Double Degree Master Theses Workshop 1	<i>Hybrid</i>	C6.10
109	Mobility, Migration and its Governance. Knowledge production, migration studies and the “Southern perspective”?	<i>Onsite</i>	C5.05
110	The essential work of migrant women. Labour trajectories, political regulation and resistance strategies of domestic and agricultural workers	<i>Onsite</i>	C2.02
111	Moulding categories, accessing rights: migrants and intermediaries	<i>Onsite</i>	C2.01
112	Book Talk: Migrations in the Mediterranean	<i>Onsite</i>	C3.01
113	SC DIVCULT Special Session: Art as a method. Exploring the subversive power (and risks) of creative methodologies in migration research	<i>Onsite</i>	Aud C1.03
114	SC RACED Special Session: Race and Migration. Reflecting on categories and alliances	<i>Onsite</i>	B2.01
115	Moving, Staying, Leaving: On the Interaction of Migration and Social Mobility in Asia, Africa and South America - Part 2	<i>Onsite</i>	C4.02

116	Discrimination from a cross-national perspective: new ways to conceptualize, measure, and explain discrimination.	<i>Onsite</i>	C5.02
117	SC MIGPOG Special Session: New complexities and geographies in migration and diversity governance - Part 2	<i>Onsite</i>	B2.02
118	SC EduSocial Special Session: Teaching for social justice and belonging: Pedagogical tools and strategies for teaching racialized students	<i>Onsite</i>	C4.01
119	Digital Nomadism as an emerging migration governance topic	<i>Onsite</i>	C4.08
120	International mobility and welfare states: policies, politics and strategies in blurred social protection spaces (Part II)	<i>Onsite</i>	C5.01
121	Site for Refugees: Managing and Designing the Place	<i>Online</i>	Webex
122	Demographic Perspectives on International Migration and its Consequences	<i>Online</i>	Webex
123	City Networks and the Framing of Diversity: Narratives and Practices of "Diverse Cities" Beyond the European Context	<i>Online</i>	Webex
124	Diversity and Inclusion in Education: Institutional Attitudes	<i>Online</i>	Webex
125	Migration, Emigration and Resettlement Policies	<i>Online</i>	Webex
126	Migration and the labour market	<i>Online</i>	Webex
127	Home making, hybrid identities and belonging	<i>Online</i>	Webex
128	Migration and the construction of social stratifications. A Bourdieusian approach on migrants' positionalities in European societies 2/2	<i>Online</i>	Webex

Wednesday, 3 July / 16:40 - 18:10

Session	Panel Title	Mode	Room
129	Current perspectives and future research on Lusophone migration in Europe	<i>Hybrid</i>	C6.07
130	The ethics of researching irregular migration	<i>Hybrid</i>	C6.02

131	Decentering migration studies (Part 2)	<i>Hybrid</i>	C6.08
132	SC MITRA Special Session: Considerations and Implications of Transnationalism in Migration and Policy making	<i>Hybrid</i>	C6.01
133	Older Migrants and Interactions with Health Care Providers	<i>Hybrid</i>	C4.06
134	Travelling (with) Concepts: The EuMIGS Double Degree Master Theses Workshop 2	<i>Hybrid</i>	C6.10
135	“Peço licença, sou novo aqui!” Sense of belonging and resistance of migrants in Portugal	<i>Onsite</i>	C5.05
136	Understanding the importance of home-feeling for forced migrants’ well-being from an interdisciplinary perspective	<i>Onsite</i>	C2.02
137	Elastic Borders: A novel approach to analysing contemporary border regimes in Europe and North Africa	<i>Onsite</i>	C3.02
138	Participatory research as a method of reflexivity in migration research	<i>Onsite</i>	C2.01
139	Urban citizenship and inclusion: Examining the role of migrant organizations in civil society initiatives for newcomer urban inclusion	<i>Onsite</i>	C3.01
140	SC Older Migrants Special Session: Inclusive Methods for Researching with Older Migrants	<i>Onsite</i>	Aud C1.03
141	Investigating Belgian integration policies from the perspective of refugee families: a socio-spatial emic study of inclusion pathways and psychosocial well-being	<i>Onsite</i>	B2.01
142	Between free movement and migration: an intersectional approach to intra-EU mobilities in the midst of several crises	<i>Onsite</i>	C4.02
143	Discrimination across countries and settings: new designs, techniques, and explanations.	<i>Onsite</i>	C5.02
144	Ordering migrants and migration	<i>Onsite</i>	B2.02
145	Migration, policy and consequences in Africa and its neighbourhood	<i>Onsite</i>	C4.01
146	Race, Colonialism and Migration Studies	<i>Onsite</i>	C4.08
147	International mobility and welfare states: policies, politics and strategies in blurred social protection spaces (Part III)	<i>Onsite</i>	C5.01
148	Delineate forced migration research within the field of migration studies	<i>Onsite</i>	C5.08

149	Co-writing citizenship into being through collaborative autoethnography: A workshop for narrativity in migration studies	Online	Webex
150	Refugee and asylum seeker protection in East Asia: the interplay between state, civil society, and migrant actors	Online	Webex
151	Discourses of Hate Against Racialized Migrant Labouring Bodies: A Cross-country Study in South Europe	Online	Webex
152	Aspirations, Requirements and Narratives of Membership	Online	Webex
153	Attitudes and support towards migrants and refugees	Online	Webex
154	Refugees' entrepreneurship and access to the labour market	Online	Webex
155	Labour migration	Online	Webex

Thursday, 4 July / 09:00 - 10:30

Session	Panel Title	Mode	Room
156	Reflexivity and an Ethics of Care in Migration Research: Shaping and Reshaping Migrants and Migration Researchers	Hybrid	C6.07
157	Encounters, transitions, and struggles in refugees' rights, policies, and studies: A call for a relational praxis in the field (I)	Hybrid	C6.02
158	Research Methods in Deportation: Presentation, discussion and application of the power-knowledge approach	Hybrid	C6.08
159	African Perspectives on Migration Governance: between securitisation and free movement?	Hybrid	C6.01
160	Local responses for (forced) migrants in times of crisis (Part 1)	Onsite	C4.06
161	Constructed desirability of the EU as mobility destination from Asia: perspectives of social actors "here" and "there"	Onsite	C5.05
162	Practicing decolonization through migration research methods	Onsite	C2.02

163	The Social Construction of “Vulnerability”: Right to asylum and the typology of “deservingness”	Hybrid	C3.02
164	Diversities in research on the intersection of ageing and migration	Onsite	C2.01
165	More handbooks, more reflexivity? On the drivers, prospects and implications of a recent turn in the academic market of migration studies	Onsite	C3.01
166	Immigrant Sanctuary: Activism, Policies, Dilemmas Part 1: Sanctuary between Activism and Policy	Onsite	Aud C1.03
167	SC GenSeM Special Session: Sexuality and Gender Identity: Nonheteronormative Mobilities and Settlement Experiences	Onsite	Aud C1.04
168	Depictions, expectations, and self-image – How status, discourse, and policies influence identity, exclusion, and sense of belonging	Onsite	B2.01
169	Exploring Strategies to Capture Complexity in Migration Policy	Onsite	C4.02
170	Migration and labour market integration: Priorities, selectivity and transnational dynamics	Onsite	C5.02
171	Knowledge production in migration studies, Part 1	Onsite	B2.02
172	Placing skill: Displacement and emplacement among highly skilled refugees and migrants in post-industrial urban Europe	Onsite	C4.01
173	Including space into reflexive migration research	Onsite	C4.08
174	Super-diversity, Integration and Transnationalism Theories: Conceptual Reflections	Onsite	C5.01
175	Operationalising critical (self-)reflexivity: towards an anti-colonial manifesto for using creative methods in migration and border research	Onsite	C5.08
176	(De)constructing Migrants' Welcome around the World through Multi-stakeholder Perspectives: Bringing in Space, Scale and Geopolitics	Online	Webex
177	The mechanisms and conditions of civil society action and place-making in superdiverse neighborhoods that face socioeconomic challenges.	Online	Webex
178	Multilingualism in Providing Quality Mental Health Care to Migrants – Needs, Resources and Practices	Online	Webex
179	The construction of belonging across integration stages: lived experiences of political integration across diverse contexts	Online	Webex
180	Social construction of migrants	Online	Webex

181	Discrimination in the job market	Online	Webex
182	Migrants' uncertain futures	Online	Webex
183	Humanitarian Borders and Asylum in Europe	Online	Webex

Thursday, 4 July / 10:50 - 12:20

Session	Panel Title	Mode	Room
184	Assessing the vulnerability of migrants, asylum-seekers and refugees in high-income countries	Hybrid	C6.07
185	Book Launch and Workshop: Remittances as Social Practices and Agents of Change. The Future of Transnational Society (Eds., Meyer S., Ströhle C.) Palgrave Macmillan, 2023	Hybrid	C6.02
186	Mobile Europeans and Democratic Participation: Attitudes, voting and public support	Hybrid	C6.08
187	The Role of Courts in Shaping Access to Asylum: Comparative Perspectives from Brazil, India, Turkey, Italy and Austria	Hybrid	C6.01
188	Local responses for (forced) migrants in times of crisis (Part 2)	Hybrid	C4.06
189	A reflexive approach to migration and ageing in Southern Europe	Onsite	C5.05
190	(Re)constructing the diasporic experiences of Hong Kong migrants in Asia: A relational approach	Onsite	C2.02
191	Reflexive Perspectives on Whiteness in Migration Research	Onsite	C3.02
192	Indigenous and Displaced Populations in Higher Education	Onsite	C2.01
193	SC Reflexivities Special Session: Mainstreaming reflexivity: Potentials, challenges and pitfalls	Onsite	C3.01
194	Immigrant Sanctuary: Activism, Policies, Dilemmas Part 2: Sanctuary under Pressure	Onsite	Aud C1.03
195	SC GenSeM Special Session: Bordering the intimate sphere: precarious legal status families in European migration regimes	Onsite	Aud C1.04
196	The financial dimension of local integration policies. Instruments, conditions, effects	Onsite	B2.01

197	Racialisation in migration from/to/within Central and Eastern Europe: Decolonial perspectives	Onsite	C4.02
198	Dilemmas of Doing Diversity: Diversity Policies and Practices at the Local Level	Onsite	C5.02
199	Transnational care arrangements and transnational families	Onsite	B2.02
200	Discrimination in the labor market	Onsite	C4.01
201	What is new on political participation of migrants? Comparative, multilevel evidence on policies and practices	Onsite	C4.08
202	Knowledge production in migration studies, Part 2	Online	Webex
203	Decisions of supranational courts and their effects on the migration policy of states	Online	Webex
204	Visibilizing Roma People in the Debate on Race and Racialization in Europe: Empirical Evidence and Policy Challenges	Online	Webex
205	Categorisation and boundary-making in migration studies	Online	Webex
206	Housing and local citizenship for migrants	Online	Webex
207	Critical evaluation of the construction of refugees and asylum seekers	Online	Webex
208	Transnational family and the circulation of care giving practices	Online	Webex

Thursday, 4 July / 14:15 - 15:45

Session	Panel Title	Mode	Room
209	On Empowerment and Solidarity in Academic Work. Reflexive Turn in Migration Research.	Hybrid	C6.07
210	Assembling Mobilities: Culture, Industry and Migration from Japan to Europe	Hybrid	C6.02
211	New research on the theory and methodology for understanding imagined migration and its implications, Part 1	Hybrid	C6.08
212	Immigration to Non-Metropolitan Areas: Europe in Comparative Perspective	Hybrid	C6.01

213	Lusophone migrations to Luxembourg. Coping with smallness and superdiversity	<i>Hybrid</i>	C4.06
214	Digitalization and migration: rethinking socio-economic inclusions and exclusions	<i>Onsite</i>	C5.05
215	Young People and Transnational Social Mobility: Exploring the Dynamics of Class and Race on the Move	<i>Onsite</i>	C2.02
216	Educational Inequality or Inclusion: Identity, Health and Digitalization	<i>Onsite</i>	C3.02
217	Understanding the complexity of migrants navigating “integration”	<i>Onsite</i>	C2.01
218	Beyond Physical Borders: How Citizens and Immigrants Shape Nations’ Imagined Boundaries	<i>Onsite</i>	C3.01
219	Immigrant Sanctuary: Activism, Policies, Dilemmas Part 3: Sanctuary beyond Cities	<i>Onsite</i>	Aud C1.03
220	Politics, policies and implications of migrant work in Europe	<i>Onsite</i>	Aud C1.04
221	Language, literacy and its intersecting axes in non-formal education for adult immigrants and refugees in Europe. The importance of national and local contexts for a policy-practice debate	<i>Onsite</i>	B2.01
222	Unstable/flexible migrant categories in conflictive scenarios: comparing cases from Europe and the Americas. Part 1	<i>Onsite</i>	C4.02
223	Accessing citizenship: New perspectives on an old question	<i>Onsite</i>	C5.02
224	Strategies against racism and discrimination	<i>Onsite</i>	B2.02
225	Attitudes of/towards migrants: Conceptual and empirical developments	<i>Onsite</i>	C4.01
226	Constructing Refugees and Other Forced Migrants, Part 1	<i>Onsite</i>	C4.08
227	Policy Categories and Migrant Resistance: A Reflexive Inquiry (Part 1)	<i>Onsite</i>	C5.01
228	Cultural Diversity in the UNIC HEIs: The Role of Inclusion Practices on Belonging and Identity Building	<i>Onsite</i>	C5.08
229	Action-research and participatory methods: critical reflection and alternative perspectives	<i>Online</i>	Webex
230	Encounters, transitions, and struggles in refugees’ rights, policies, and studies: A call for a relational praxis in the field (II)	<i>Online</i>	Webex

231	Challenging the dominant narratives: re-constructing migrants' stories of health and illness through the acts of epistemic justice	Online	Webex
232	Evolving imaginaries of migration	Online	Webex
233	Culture, identity and belonging	Online	Webex
234	Attitudes and discourses of immigration	Online	Webex
235	Transnational engagements and networks	Online	Webex

Thursday, 4 July / 16:00 - 17:30

Session	Panel Title	Mode	Room
236	Multi-level Perspectives on Environmental Mobilities in North Africa	Hybrid	C6.07
237	Highly skilled migrants' transfer of capitals, skills and resources to European labour markets: reflexivities on 'adaptive strategies' and 'qualification and skill mismatches'	Hybrid	C6.02
238	New research on the theory and methodology for understanding imagined migration and its implications, Part 2	Hybrid	C6.08
239	(Forced) Migration in and from the Global East: decentring and decolonising knowledge production	Hybrid	C6.01
240	Understanding Postmigration in Germany: Empirical Results from Interdisciplinary Perspectives	Hybrid	C4.06
241	Framing Irregular Migration: Data Challenges from Collection to Analysis	Onsite	C6.10
242	Investigating Infrastructures of Injury and Inequity in Transnational Industrial Food Systems	Onsite	C5.05
243	Humanitarian Crises and Double Standards in the Contemporary World	Onsite	C2.02
244	Migrant categorisation, social constructions and policy processes	Onsite	C3.02
245	Migrant strategies and advocacy for migrant rights	Onsite	C2.01
246	SC Older Migrants Special Session: Early career symposium on the ageing-migration nexus: Reflections on a recently published handbook	Onsite	C3.01

247	Trajectories of Ukrainian exiles: a new diaspora in the making?	Onsite	Auditório C1.03
248	SC Meth@Mig Special Session: Discussing and advancing mixed methods for migration research	Onsite	Auditório C1.04
249	Questioning EU migration and externalization politics from a transnational perspective	Onsite	B2.01
250	Unstable/flexible migrant categories in conflictive scenarios: comparing cases from Europe and the Americas. Part 2	Onsite	C4.02
251	From Parliamentary Representation to Political Activism: Varieties and Modes of Migrant Representation	Onsite	C5.02
252	Racial capital and racial capitalism	Onsite	B2.02
253	Methods in qualitative migration research	Onsite	C4.01
254	Constructing Refugees and Other Forced Migrants, Part 2	Onsite	C4.08
255	Policy Categories and Migrant Resistance: A Reflexive Inquiry (Part 2)	Onsite	C5.01
256	Planned relocation and the need to support communities: Taking action at policy, academic and practice levels	Online	Webex
257	Institutional Racism and State Bureaucracies - An Exploration of institutional decision-making through qualitative empirical analysis	Online	Webex
258	Unveiling Complex Experiences: A Reflexive Approach to Women's Vulnerabilities amidst Global Migration and Multifaceted Crises	Online	Webex
259	Conflicting representations of migrants and migration	Online	Webex
260	Sexual orientation and gender identity during and after migration	Online	Webex
261	International students and highly-skilled migrants: Policies and trajectories	Online	Webex
262	Migrant integration: constructing attitudes, policies, and identities	Online	Webex

Friday, 5 July / 09:00 - 10:30

Session	Panel Title	Mode	Room
263	Marriage decision and partner choice in the context of migration	<i>Hybrid</i>	C6.07
264	Privilege in migration: mobilities, inequalities, and the urban context, Part 1	<i>Hybrid</i>	C6.02
265	The use of ICTs in African Transnational Families	<i>Hybrid</i>	C6.08
266	More restrictive, liberal, selective - or just multi-dimensional? European country responses to the reception, settlement and integration of displaced persons from Ukraine	<i>Hybrid</i>	C6.01
267	Migration and well-being	<i>Hybrid</i>	C4.06
268	Diaspora and Transnational Engagements	<i>Hybrid</i>	C6.10
269	Intimacy, reproductive labour and vulnerability in gender and migration	<i>Onsite</i>	C2.01
270	Transnational Family Dynamics	<i>Onsite</i>	C3.01
271	Overcoming gender biases in perceptions and studies of West African migrations: Complexities, continuities and dynamics of women on the move	<i>Onsite</i>	Aud C1.03
272	Urban Migration Governance: Negotiating Autonomy and Belonging in Cities	<i>Onsite</i>	Aud C1.04
273	Bridging Citizenship Laws & Migrant Electoral Rights	<i>Onsite</i>	B2.01
274	Quantitative approaches to studying (social) media discourse and racism	<i>Onsite</i>	C4.02
275	Policies, Discourses and Narratives on Migration and Refugees	<i>Onsite</i>	C5.02
276	Locating race in migration	<i>Onsite</i>	B2.02
277	Small localities (again) at the forefront of refugee reception and integration: what can we learn from recent experiences in the EU? (Part 1)	<i>Onsite</i>	C4.01
278	Diversity and Inclusivity in Academia: Critical Reflections from UNIC European University of Post-Industrial Cities	<i>Onsite</i>	C4.08
279	Creative and Collaborative counter-constructions of the lives of asylum seekers, refugees, and migrants in England and Wales	<i>Online</i>	Webex

280	Agency and liminality in the case of forced migrants under Temporary Protection Schemes	Online	Webex
281	Life Strategies of Young Labouring Migrants in Ageing Societies	Online	Webex
282	Emotions and communication of/with migrants	Online	Webex
283	De-migrantisation of mobile individuals	Online	Webex
284	Forced migration: Experiences, narratives, and agency	Online	Webex
285	Reflexive and digital methodologies in migration research	Online	Webex

Friday, 5 July / 10:50 - 12:20

Session	Panel Title	Mode	Room
286	Same-Sex Marriage and Migration: Exploring a New Research Agenda	Hybrid	C6.07
287	The (Re-)Production of Exceptionalism in European Agrifood Sectors: Connecting Migration, Labor and Social Policy with Migrant Agrifood Worker's Experiences	Hybrid	C6.02
288	South Europe internal migration: between structural and cultural factors and individual motivations	Hybrid	C6.08
289	Bordering and othering refugee and migrant children and youth	Hybrid	C6.01
290	Methods in quantitative migration research	Hybrid	C4.06
291	Deconstructing (re)integration and reflexivity	Hybrid	C6.10
292	Being queer (migrants), doing queer migration research: unpacking the relationships between epistemic location and everyday practice of producing knowledge	Onsite	C5.05
293	Migrant inclusion and social rights	Onsite	C2.02
294	Migrants' experiences through the arts and sport mobility	Onsite	C3.02
295	Postcolonial analysis of gender and migration	Onsite	C2.01
296	South-to-South Return Migration in the EU's Neighbourhood	Onsite	C3.01

297	Bridging Disciplines: A Comprehensive Dialogue on Climate-Induced Migration	<i>Onsite</i>	Au- ditório C1.03
298	Transnational Youth Mobility through Trajectories and Temporalities	<i>Onsite</i>	Au- ditório C1.04
299	Challenges to citizenship in a globalizing Europe	<i>Onsite</i>	B2.01
300	Perceptions of inequality and support for social change: Perspectives across ethno-racial minority and majority groups	<i>Onsite</i>	C4.02
301	(Mixed) reflexive methodology in migration research	<i>Onsite</i>	C5.02
302	Privilege in migration: mobilities, inequalities, and the urban context, Part 2	<i>Online</i>	Webex
303	The politics of migration control in Europe: Deportation, AVR, and Industries and Practices of Border Control	<i>Online</i>	Webex
304	Becoming, Being and Losing Migrant Status: A Reflexive Perspective on Transitional Processes in Migration	<i>Online</i>	Webex
305	Imaginations of Migration Governance	<i>Online</i>	Webex
306	Gender and violence in migration	<i>Online</i>	Webex
307	Migration, identities, and belonging	<i>Online</i>	Webex
308	Methodological reflexions in qualitative migration research	<i>Online</i>	Webex



SIDE EVENTS

Side events, screenings
and recreational activities

Side event

Panel

Critical challenges and transitions in migration studies.

Panel for the 10 years anniversary of the journal Comparative Migration Studies

**Wednesday, 3rd of July, between 18:30 and 19:30 (Lisbon time)
at Iscte (Building 2, Floor 2, Aud. B203)**

The journal CMS celebrates its 10 years anniversary with a reflective panel on how the journal has evolved and how it has contributed to the field of migration studies. In an interactive panel with editorial board members and various scholars on the development of migration studies in various parts of the world, several key questions will be addressed; how has the journal evolved, what have been key challenges and transitions in the field of migration studies, how has the journal contributed to these, what challenges and transitions lay ahead of us and how can the journal contribute further? The panel will be led by Sanam Roohi, editor-in-chief of the journal Comparative Migration Studies.



Side event

Theater Play

“Casa Portuguesa” by Pedro Penim

Thursday, 4th of July, 21:00 (Lisbon time) at Teatro Maria Matos

Casa Portuguesa [Portuguese Home] tells the (fictional) story of an ex-soldier of the Portuguese Colonial War who, while talking with the ghosts of his past, finds himself confronted with the decadence and transformation traditional models of home, family, country and the father figure canon.

A portrait of what was, is and could be (or not), the patriarchal family unit par excellence – the home. A production with a backdrop of recent events in our democracy that revisits the most painful of our history's open and festering wounds.

At an unspecified time perhaps towards the end of the 1940s, in a bar in a hotel in Mozambique, three Portuguese write the song Uma Casa Portuguesa [A Portuguese Home]. It is a cheerful but sad fado that echoes the stereotypical nostalgia of an idea about Portugal, so dear to the Estado Novo's ideology. Even after 48 years of democracy in Portugal, many Portuguese still know this song by heart. In 1968, Joaquim Penim set off against his will and beliefs to the Colonial War in Mozambique. This experience provided the material many years later for his book called No Planalto dos Macondes.

In 2021, Emanuele Coccia published *Filosofia della Casa*, an essay that describes home as a space where injustices, oppressions and inequalities have been concealed and repeated mechanically for hundreds of years. It's at home and through it, for instance, that most of the sexual violence that encourages heteronormativity and racism takes place. It was by bringing together these three strands - fado, war diary and philosophical essay – that Casa Portuguesa emerged as a stage play.

More details on this event at Teatro D. Maria II website

<https://www.tndm.pt/>



Side event

Film Screening

Documentary “From Here” by Christina Antonakos-Wallace

**Wednesday, 3rd of July, 18:00 (Lisbon time)
at Iscte (Building 2, Floor 2, Aud. B204)**

The movie has been screened at the European Parliament, at the International Office for Migration and at several international conferences (X Migration Congress, Madrid; International Initiative for the Promotion of Political Economy (IIPPE) Conference, Bologna, Italy; Welcome Interactive Conference, San Jose, California; Othering and Belonging European Conference, Berlin among others,) and have received the feedback that the approach speaks deeply to those working deeply in the field of migration, and is a powerful catalyst for conversation.

Synopsis

“From the epicenter of today’s global migration debates, FROM HERE (formerly With Wings and Roots*) follows four young people who represent the future of global citizenry. Filmed over the better part of a decade in two of the world’s largest immigration countries—the U.S. and Germany—FROM HERE captures an international generation’s fight for belonging in an era of rising nationalism.

Set in Berlin and New York, FROM HERE interweaves the stories of Tania, Miman, Sonny and Akim – artists and activists raised in the Global North to parents from the Global South. The film accompanies them as they move from their 20’s into their 30’s, facing major turning points: fighting for citizenship, creating a family, surviving violence, and finding creative expression. Beautifully shot over the course of ten years, the film captures their struggle to define belonging for themselves in societies increasingly hostile to their

existence.

FROM HERE is accompanied by a robust impact and education initiative which assumed the original name of the film, With Wings and Roots. The initiative includes a content-rich web platform of educational resources, including curricula, interactive timelines of US and German immigration history, and the possibility for visitors to add their voices to the story collection.”

More details about the documentary at
<https://www.fromherefilm.com/>



Side event

Tours

Guided Tours through Lisbon

Promotion of the work of the Batoto Yetu Association as well as their guided tours throughout Lisbon and the Sado region. The tours promote a better understanding of Portugal's history and reality through a guided and specialised guide.

Synopsis

"Batoto Yetu Portugal's guided tours, "Discovering Lisbon's African Heritage", are now open to the public! The goal of these tours is to disseminate Lisbon's African character which is scattered in a variety of visible and invisible memories and traces today.

The "migration" of African peoples is a permanent element of the History of Portugal since the 6th century. Whether out of their own free will (as the Moors, or Muslim Africans and Arabs, did), "by force" (until the end of the 18th century) or afterwards "by strength" (from late-18th century colonialism to 1974, and the globalized age of today) there were countless African peoples who established themselves in Lisbon.

The presence of these populations was always different than any other: The majority of this most "recent" presence of Africans did not come out of their free will as the Romans, Moors and Arabs. For centuries, they took on essential tasks but these were also the harshest and most undervalued tasks in society. Inserted in all fortune-making industries, Africans – enslaved or free – were a structural element of Portuguese urban life.

However, in physical and structural terms, the visibility of their presence in the city is very bleak today, albeit the same is not true genetically and culturally (Fado) .

Let's rediscover Lisbon's African heritage together! Reservations are always open and the tours are guided by professors and researchers such as: Isabel Castro Henriques, José Antunes, and members of Batoto Yetu Portugal."

More details about the tours at <https://batotoyetu.pt/en/>



Side event

Tours

Street Art Tours at Quinta do Mocho

3 to 5 July, Meeting point at Casa da Cultura de Sacavem

Guias do Mocho were born from the desire of a group of young people who understood that art could change the way their neighborhood and its people were seen.

At first they were just volunteers but one of its intentions was also to be able to demonstrate entrepreneurship in a practical way, showing that the impossible only exists until someone makes it possible.

With only guided tours of street art, where they contextually explain the artist's vision and the relationship between the work and its neighborhood, they understood that another art was being forgotten, Gastronomy, and these two arts became allies at Quinta do Mocho.

With these two basic ingredients plus the desire to do something more for the place where we live, we managed to break the pre-conceived barriers of ghettoization and minorities, thus opening the way for the socialization of different peoples.

"An essential visit for anyone who wants to understand the unknown"

Schedule

2h duration

Mornings 11am / Afternoons 2.30pm / African Lunch 1pm

Prices per person

Tour €20 / Tour + African Lunch €35

If there are dietary restrictions, please notify us up to 24 hours before the tour

Contact for bookings

Kally +351 969 650 852 - whatsapp or normal call

Instagram @kallymeru | Email kallymeru.corp@gmail.com



Side event

Exhibition

Photography Project 'Sea Me'

Monday to Friday, July 1 to 5, Iscte (Floor 1)

'Sea Me.' (2022) is a co-creation with refugee women I met in Athens, Greece. The focus is on 'now' and the future, who they are, how they see themselves and what they dream about. We use photography to bring attention to the things that bring joy and happiness, as an effort to be more present and take a break from heavy stress and daily worries.

The camera allows us to create a 'nowtopia', a space as good as possible, where we can be ourselves. It is a never-ending search for a non-existing place. But in this act of creating, we can be someone with an identity."

More details about the exhibition at <https://reinvandersypt.com/sea-me>



Side event

Concert

Piano Concert by João Borges

Monday, 1st of July, 19h00 (Lisbon time) at Iscte Grand Auditorium

Italian concerto BWV 971	J.S. Bach
Study op.10 no.8	F. Chopin
Sonata	A- Berg
Ballade no.3 op.47	F. Chopin

João Borges was born in 2002 in Queluz. He began taking private piano lessons at the age of eight with the maestro Simão Barreto. In 2020, he joined the Academia Nacional Superior de Orquestra (Metropolitana), studying Piano for Chamber Music and Accompaniment. At this institution he had the opportunity to join the Orquestra Académica Metropolitana on piano and the Orquestra Sinfónica Metropolitana on celesta. He is currently studying for a Master's degree in Music at the University of Aveiro.



STANDING COMMITTEE MEETINGS

Tuesday, 2nd of July, between 16:40 and 17:40

SC Reflexivities	C6.01
SC Families, welfare, care and the life course	C5.06
SC RACED	C4.06
SC GenSeM	C6.10
SC EduSocial	C2.02
SC DIVCULT	C6.02

Wednesday, 3rd of July, between 18:30 and 19:30

SC MIGPOG	C6.10
SC Meth@Mig	C6.08
Executive Committee on Diversity, Equality, and Inclusion	C2.02
SC MITRA	C4.06

Thursday, 4th of July, between 18:30 and 19:30

SC IILME	C6.01
SC MIGCITPOL	C4.06

PHD NETWORK ACTIVITIES

All times are in GMT+1

Tuesday, 2 July 2024 between 09:00 and 12:00

Each year, the PhD Network Board hosts special events tailored to PhD students participating in the IMISCOE Annual Conference.

PROGRAMME OVERVIEW

09:00-09:10

Welcome and introduction (Hybrid)

09:10-10:10

Session 1 (Hybrid): Setback session - Redefining "failure" in academia

10:10-10:30

Break

10:30-12:00

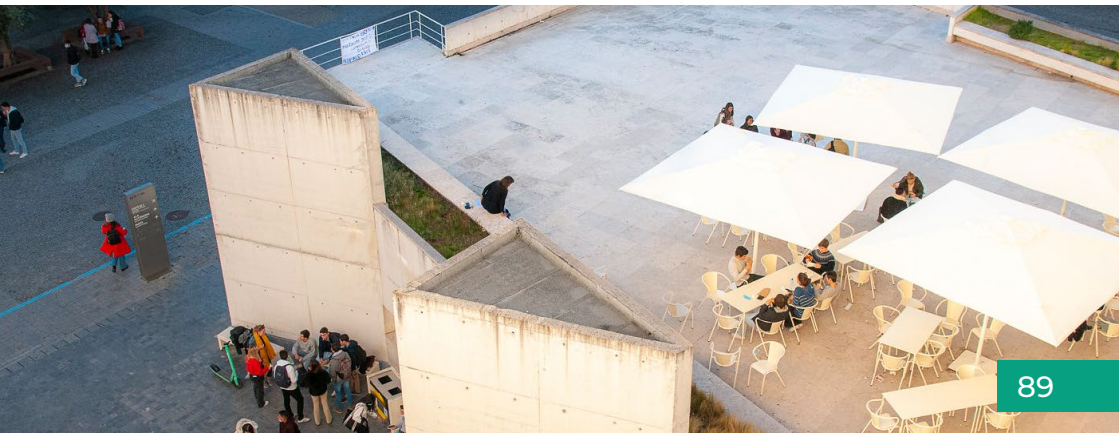
Session 2A (On-site only) - Interactive PhD session: The one where we connect and challenge notions of "failure"

10:30-12:00

Session 2B (Online only) - How to make research more engaged: positionality, inequalities and access

12:00

Lunch offered by IMISCOE PhD Network Board



Sessions 1 (Hybrid) and 2A (On-site only)

Webex and Aud. B2.03, Floor 2

During the initial half-day of the annual conference, the PhD Network Board presents sessions tailored to PhD students and early career researchers, focusing on topics relevant to their interests and concerns. This year, the PhD Network Board will host two morning sessions (one hybrid and one on-site) on July 2nd around the theme of 'failure'. We will delve into what constitutes 'failure', who defines it, and whether 'failure' is always negative or if it can be embraced as a catalyst for collective learning and change.

Can we reclaim and redefine failure to promote a more compassionate academia?

Starting from this question, we will deconstruct the concept of "failure" within a highly competitive and individualized academic environment where emphasis on metrics, publications, and productivity often fosters a pervasive sense of inadequacy. Together, we plan to explore coping mechanisms and strategies to resist existing notions of failure at the individual and structural level, while reclaiming and redefining its meaning. In doing so, our discussion will address both individual and structural aspects of "failure", aiming to generate actionable suggestions for communities like IMISCOE to serve as platforms for dialogue and support in tackling these challenges.

The initial session will take the form of a panel, featuring guest speakers invited to share their personal experiences and thoughts on "academic failure". Following this, the second session will be an interactive workshop designed to foster discussions among PhD students themselves. The aim of this workshop is to facilitate the exchange of experiences and ideas in a supportive environment.

Speakers

Norma Schemschat

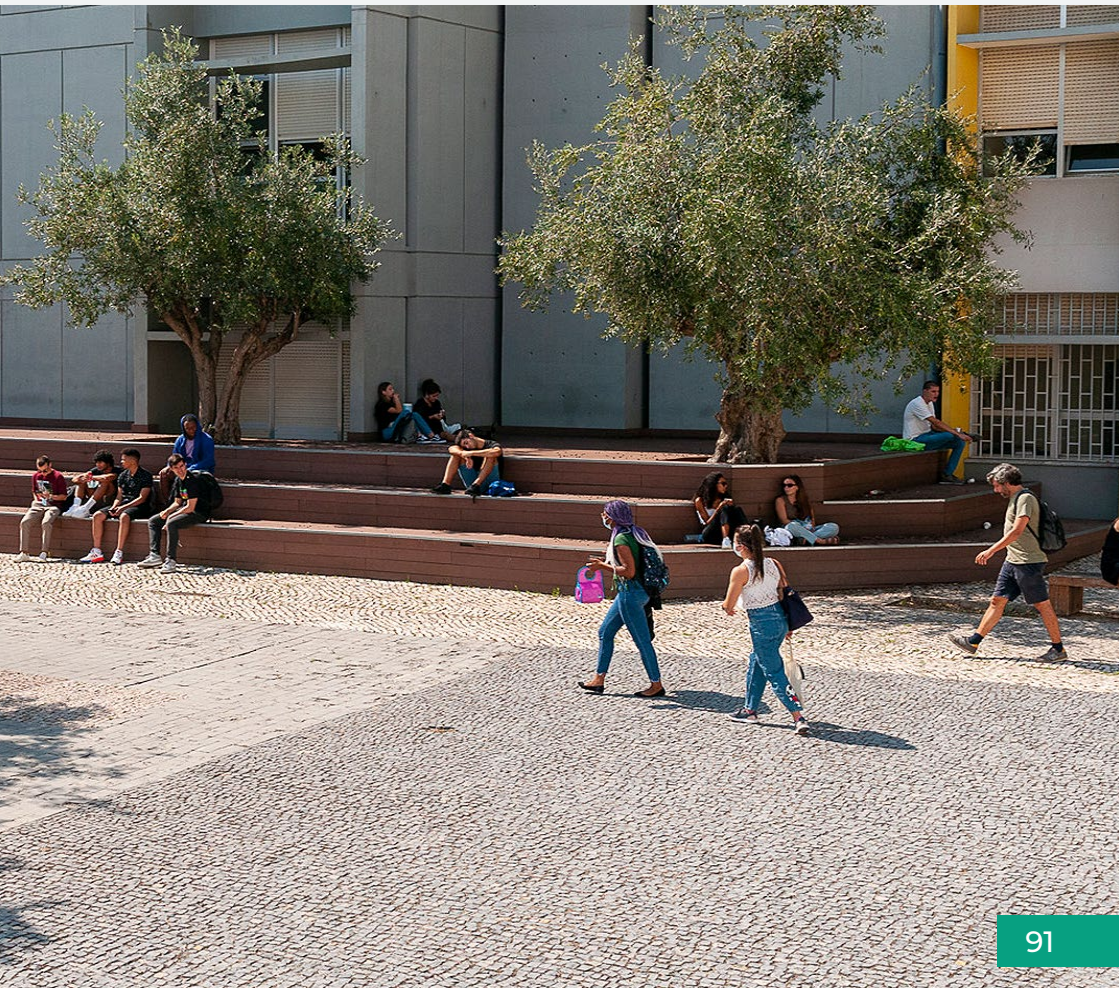
Faculty of Social and Behavioural Sciences, University of Amsterdam

Sayaka Osanami Törngren

Malmö Institute for Studies of Migration, Diversity and Welfare, University of Malmö

Apostolos Andrikopoulos

Department of Anthropology, Harvard University and at the University of Amsterdam



Session 2B (Online only)

Webex

The panel presents five contributions from the 2024 IMISCOE PhD network special issue entitled “How to make research more engaged: positionality, inequalities and access”. This initiative is an attempt by the blog group to provide a panoramic journey through the practice and politics of conducting engaged migration research. The special issue consists of thirteen blog posts by PhD-level migration scholars and practitioners from diverse fields such as law, sociology, politics, human geography, development, architecture, education, communication, language, social medicine and community health.

How to make research more engaged: positionality, inequalities and access

The panel analyses and unpacks three research dilemmas - positionality, inequalities, and access - as intertwined yet distinct ethical concerns within the field, involving difficult choices in theorising, methodological application and co-production of knowledge about migration. First, we argue that an inter/transdisciplinary approach is needed to facilitate critical dialogues between different perspectives and knowledge in the field. This approach aims to complement the dialectic between migration policies and their negative impacts on people who migrate. Second, we explore the connection between positionality and reflexivity for critical perspectives, highlighting how positionality is shaped and can shift during fieldwork and how it functions as a critical element in unveiling power balances. Third, we highlight the potential of participatory methods to challenge established knowledge about migration while empowering and engaging people who migrate as experts.

Finally, we suggest that engaged migration research that challenges positionality, inequalities and access is key to moving towards a compassionate academic practice. We call for unity in the efforts of activist migration scholars

to mitigate the potentially negative effects of their endeavours, eschewing reductionist or extractivist scholarship in favour of co-production. Overall, we believe that these efforts are vital not only in academia but beyond as well, as they provide a means to challenge dominant regimes of im/mobility characterized by neo-colonial bordering dynamics.

Speakers

Khaoula Stiti

If you are a migrant in academia, don't be ashamed": the Role of Migration Studies and Migrant Scholars in Dismantling Shame in the Neoliberal University

Istikhar Ali

Charting the Terrain of Identities: An Ethnographic Exploration in a Muslim Neighborhood in Delhi

Irene Praga Guerro

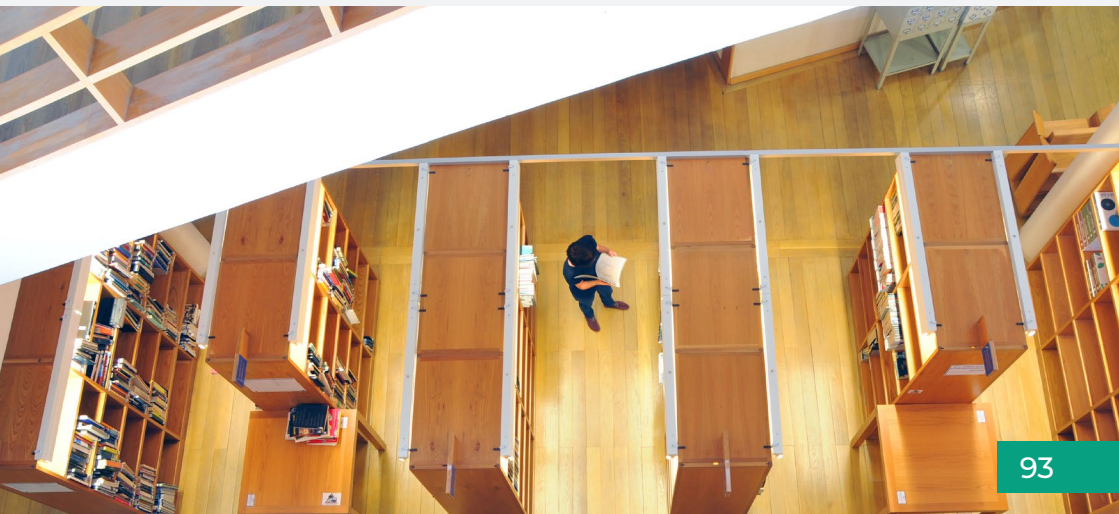
Collaborative Writing in Independent Journalism on Global Mobility. A Critical Note

Jami Abramson

Using Ideas of 'Home' to Challenge Anti-Migration Narratives

Imen El Amouri

A Call to Action: Towards a Compassionate Approach to Migration Studies





About Lisbon

Voted Europe's Leading City Destination 2024, the capital of Portugal is a historical city full of stories to tell, where the sun shines 290 days a year and the temperature rarely drops below 15°C. A city where you feel safe wandering around day or night, where the cuisine is dedicated to creating over a thousand ways to cook the beloved bacalhau (salted cod), and where you'll find hotels and restaurants to suit every taste, budget and requirement.

Discover Lisbon, a city full of authenticity where old customs and ancient history intermix with cultural entertainment and hi-tech innovation,

Find out more at the *Turismo de Lisboa* website.



Enjoy the City

Lisbon welcomes you with a rich cultural heritage that continues to grow every day. Discover the legacy left by the civilizations that inhabited the city throughout the centuries and the homage paid by artists. Let the Tagus river and Fado music embrace you and enjoy those so special things that make Lisbon unique.

Lisbon is a dream destination for foodies, wine lovers, critics and the curious. From auteur restaurants to century-old tascas, there is always a table set and waiting for you. The seafood and fresh fish bring the Atlantic onto your plate in a sophisticated way or straight from the grill.

You may love Lisbon for the monuments, ideal conditions for the practice of sport or delicious gastronomy. Make your choice and let Lisbon blow your heart away.



How to get to Lisbon

There are many ways to get to Lisbon and all of them are easy to use. With the airport just a few minutes from the centre of the city, stations with international rail links and various ports for cruise ships, there are many options for getting to the capital of Portugal. If you prefer to come by car, there are excellent roads from various points north and south along the border with Spain.

Air

Land at the Lisbon international airport which is just a mere 7 km from the centre of the city. Served by the main international airlines and just 3 hours away from the main European capitals, it is very easy to reach.

Train

It is just as easy to reach the centre of the city. National and international trains arrive every day at Santa Apolónia station, which is very close to all the traditional neighbourhoods and Terreiro do Paço. But if you would like to add a unique architectural experience to your arrival, get off at Gare do Oriente, whose Calatrava-designed lines impress even those who see it every day.

Sea

Those arriving by sea have one of the best views of Lisbon – from the river – and can moor in 3 different places, all near the centre. If you come by cruise ship, you can dock at Alcântara, Rocha Conde de Óbidos or Santa Apolónia. If you arrive by yacht, there are several marinas as you sail up the river.

Car

The best ways to enter Lisbon are via the A1 and A2, which both have national and international connections along their course. The landscape is beautiful and mobility around the region compensates the long hours of driving. After all, there is more to Lisbon than just city.

How to get around in Lisbon

Lisboa offers a regular network of rail, maritime and road transport infrastructure. When inside the city, the major transportation companies, Carris and Metropolitano de Lisboa, cover the entire city with regular transportation including:

- 4 subway lines serving 50 stations
- 6 tramway lines
- 3 funiculars
- 62 bus lines

It is possible to acquire a Lisboa Card online or at a tourism point at the airport or around the city. The card grants the holder free transportation on the Lisbon Metro subway and buses, trams and lifts. It also includes a free pass in 51 museums, monuments and places of interest as well as discounts on local services.

Useful links

Metro: <https://www.metrolisboa.pt/>

Carris - Lisbon Public Transport Company: <https://www.carris.pt/>



Lisbon's Commitment to Sustainability

Lisbon was awarded as the European Green Capital in 2020. The city has 900 hectares of diversified forest. Monsanto Park is known as the lung of the city of Lisboa. There's also plenty of gardens, botanical and public parks.





About IMISCOE

Our mission

IMISCOE (International Migration Research Network) is the largest interdisciplinary network of scholars in the field of migration. The Network currently consists of 69 research institutes from different countries around the world and from various disciplines including sociology, political science, anthropology, economics, law, demography, public administration, geography and history.

Since 2022, the coordination of IMISCOE is based at the Centre for Ethnic and Migration Studies (CEDEM) of the University of Liège.

Jean-Michel Lafleur and Daniela Vintila act as IMISCOE Coordinators. The Network Office team also includes Angeliki Konstantinidou (Network Officer), Carole Wenger (Communication Officer) and Marine Maréchal (Finance Officer).

Over the years, IMISCOE has developed and promoted a wide range of activities, including:

Research activities

IMISCOE provides a platform for scholars throughout the world to get together, initiate comparative research and organize joint research projects. The Network supports and maintains a broad range of Standing Committees that cover significant topics in migration studies, in line with the special expertise of its members. The development of common lines of study is primarily research-driven. IMISCOE derives its relevance for society in general and for policy and politics in particular from its theory-based, analytical contributions.

Publications

IMISCOE has established a book series with Springer, covering key contributions in the field of migration. To promote the dissemination of research and the widest possible access to research, IMISCOE has become the leading supporter of Open Access publishing in this research area. Most books are available in the OAPEN library. Furthermore, the Network also sponsors the Open Access journal *Comparative Migration Studies* owned by Springer.

Events

Throughout the year, numerous IMISCOE events are organized in the context of research collaborations, publication events, PhD trainings, etc. The biggest event on the Network's agenda is the IMISCOE Annual Conference, which has been organized every year since 2004 by different IMISCOE Member Institutes. Other important annual events are the IMISCOE Spring Conference and the IMISCOE PhD School. Besides these annual events, numerous activities are organized throughout the year by the various Standing and Executive Committees of the IMISCOE Network.

Training and Awards

Training of young researchers is an essential task of IMISCOE. By pooling the resources and expertise of its members, the Network facilitates the highest quality training in the field of migration studies. To this aim, the Network provides annual PhD Schools, as well as specific training modules at other IMISCOE events. The IMISCOE PhD Network and the IMISCOE PhD Academy are also an integral part of the IMISCOE Network. Also, every year IMISCOE awards the Maria Ioannis Baganha Award for the best PhD thesis in the field of migration, and the Rinus Penninx Award for the best paper presented at the IMISCOE Annual Conference.

Governance of IMISCOE

IMISCOE's governance structure includes the following bodies:

IMISCOE Board of Directors

The Board of Directors (BD) is the central decision-making body of IMISCOE. Formed by representatives of all IMISCOE Member Institutes, the BD takes decisions on the overall strategy and organization of the Network, including the appointment of hosts for our major events, funds allocation, membership policy or the establishment of new Standing and Executive Committees in the Network.

Wiebke Sievers (Austrian Academy of Sciences) is the Chair of the Board of Directors.

Current members of the Board of Directors & IMISCOE Member Institutes:

Ahmet İçduygu	MiReKoc, Koç University
Anders Neergaard	Institute for Research on Migration, Ethnicity and Society (REMESO), Linköping University
Andrea Spehar	Centre on Global Migration (CGM), University of Gothenburg
Andreas Pott / Helen Schwenken	Institute for Migration Research and Intercultural Studies (IMIS), University of Osnabrück
Andrew Geddes	European University Institute (EUI)
Aneta Piekut / Lucy Mayblin	Sheffield Migration Research Group, University of Sheffield
Anja van Heelsum / Saskia Bonjour / Bram Lancee	Amsterdam Research Centre - Migration (ARC-M), University of Amsterdam
Anja Weiß	Interdisciplinary Centre for Integration and Migration Research (InZENTIM), University of Duisburg - Essen
Anna Triandafyllidou	CERC in Migration and Integration, Toronto Metropolitan University
Benjamin Etzold	Bonn International Centre for Conflict Studies (BICC)
Birte Nienaber	Faculty of Humanities, Education and Social Sciences (FHSE), University of Luxembourg
Caitriona Ni Laoire	University College Cork
Dušan Drbohlav	Geographic Migration Centre (GEOMIGRACE), Charles University
Eleonore Kofman	Middlesex University
Federica Infantino	Unité de Recherches Migrations et Société (URMIS), University of Côte d'Azur
Ferruccio Pastore	Forum Internazionale ed Europeo di Ricerche sull'Immigrazione (FIERI)
Francesca Campomori	UNIVE, Ca'Foscari University
Francesca Stella	Glasgow Refugee, Asylum and Migration Network (GRAMNet), University of Glasgow
Gianni D'Amato	Swiss Forum for Migration and Population Studies (SFM), University of Neuchâtel

Giuseppe Sciortino	International Migration Laboratory (IML), University of Trento
Goranka Lalić Novak	University of Zagreb
Gorka Urrutia Asua	Research Unit on Migration, Management of Diversity and Social Cohesion, University of Deusto
Guia Gilardoni	Fondazione Ismu - Initiative e Studi sulla Mul- tietnicità (ISMU)
Hanne Kavli / Guri Tyldum	Institute for Labour and Social Research (FAFO)
Helga de Valk	Netherlands Interdisciplinary Demographic Institute (NIDI)
Ibrahim Awad	Centre for Migration and Refugee Studies (CMRS), American University Cairo
Ilke Adam / Hannah Vermaut	Brussels Interdisciplinary Research Centre on Migration and Minorities (BIRMM), Vrije Universiteit Brussel
Ilse Derluyn / Floor Verhaeghe	Centre for the Social Study of Migration and Refugees (CESSMIR), Ghent University
Jan Paul Brekke	Institute for Social Research Oslo (ISF)
Jaqueline Broadhead	Centre on Migration, Policy and Society (COM- PAS), University of Oxford
John Wrench	NTNU Social Research Centre for Diversity and Inclusion
Jørgen Carling	Peace Research Institute Oslo (PRIO)
Karlijn Haagsman	Maastricht Centre for Citizenship, Migration and Development (MACIMIDE), Maastricht University
Kristian Tronstad	Norwegian Institute for Urban and Regional Research (NIBR), Oslo Metropolitan University
Kyoko Shinozaki / Wolfgang Aschauer	Salzburg Migration and Mobility Studies Lab (MML PLUS), Paris Lodron, University Salzburg
Lara Momesso / Ecaterina Stefanescu	Lancashire Research Centre for Migration, Diaspora and Exile (MIDEX), University of Cen- tral Lancashire
Laura Oso	Societies in Motion Research Team (ESOMI), University of A Coruña
Lucinda Fonseca / Jennifer McGarrigle	Institute de Geografia e Ordenamento de Ter- ritório (IGOT - UL), University of Lisbon

Marco Martiniello	Centre for Ethnic and Migration Studies (CEDEM), University of Liège
Margit Fauser	Ruhr Universität Bochum
Marie-Caroline Saglio-Yatzimirsky / Camille Schmoll	Institut Convergences Migrations (ICM)
Marie Sandberg	Centre for Advanced Migration Studies (AMIS), University of Copenhagen
Mathias Czaika / Albert Kraler	Department for Migration and Globalisation (DEMIG), Danube University Krems
Milena Belloni	The Network on Migration and Global Mobility (MIGLOBA), University of Antwerp
Muhammad Zaman / Carrie Preston	Center on Forced Displacement, Boston University
Olaf P. van Vliet	Leiden Interdisciplinary Migration Seminar (LIMS), Leiden University
Òscar Prieto Flores	University of Girona
Özge Bilgili	European Centre on Migration and Ethnic Relations (ERCOMER), Utrecht University
Parvati Raghuram	Open University
Pascal Beckers	Radboud University Network on Migration Inclusion (RUNOMI), Radboud University
Patrick Simon	Institut National d'Études Démographiques (INED)
Paul Long	Monash Migration and Inclusion Centre (MMIC), Monash University
Paweł Kaczmarczyk	Centre of Migration Research (CMR), University of Warsaw
Peter Scholten	Erasmus University Rotterdam (EUR)
Pieter Bevelander	Malmö Institute for Studies of Migration, Diversity and Welfare (MIM), Malmö University
Ricard Zapata-Barbero / Zenia Hellgren	Interdisciplinary Research Group in Immigration (GRITIM), Universitat Pompeu Fabra
Saara Pellander / Marja Tiilikainen	Migration Institute of Finland (MIF)
Sarah Scuzzarello	Sussex Centre for Migration Research (SCMR), University of Sussex

Sebastián Umpierrez de Reguero / Ingrid Ríos	Casa Grande University
Sonja Novak Lukanović	Institute for Ethnic Studies (IES)
Stefania Marino	Work and Equalities Institute (WEI), University of Manchester
Steven Vertovec / Ulrike Bialas	Max Planck Institute for the Study of Religious and Ethnic Diversity (MPI-MMG)
Thais França	Centre for Research and Studies in Sociology (CIES-Iscte), University Institute of Lisbon
Verena Wisthaler	Institute for Minority Rights (IMR), EURAC Research
Veronika Bilger	International Centre for Migration Policy Development (ICMPD)
Virginie Guiraudon	Sciences Po
Wiebke Sievers	Institute for Urban and Regional Research (ISR), Austrian Academy of Sciences
Yoan Molinero	Instituto Universitario de Estudios sobre Migraciones (IUEM), Universidad Pontificia Comillas de Madrid
Zeynep Yanasmayan	Deutsche Zentrum für Integrations und Migrationsforschung (DeZIM)

IMISCOE Executive Board

The IMISCOE Executive Board (EB) oversees the management and coordination of the Network and its operation. It consists of IMISCOE Coordinators, the Chair and Vice-Chair of the Board of Directors and representatives of the Member Institutes elected by the BD.

Parvati Raghuram (Open University) is the Chair of the Executive Board.

Members: Parvati Raghuram (EB chair), Wiebke Sievers (BD chair), Òscar Prieto Flores (BD vice-chair), Ahmet İçduygu, Eleonore Kofman, Gorka Urrutia Asua, Paul Long, Özge Bilgili, Sarah Scuzzarello.

IMISCOE Coordinators & Network Office

Since April 2022, the Centre for Ethnic and Migration Studies (CEDEM) of the University of Liège is the Coordinating Institute of IMISCOE.

Jean-Michel Lafleur and Daniela Vintila act as IMISCOE Coordinators. The IMISCOE Network Office also includes Angeliki Konstantinidou (Network Officer), Carole Wenger (Communication Officer) and Marine Maréchal (Finance Officer).

Executive Committees

IMISCOE's Executive Committees are task-specific committees dealing with different aspects regarding the Network's core activities, functioning and operations.

Committee on Diversity, Equality and Inclusion

This Committee focuses on IMISCOE's strategy on diversity, equality and inclusion.

Members: Anders Neergaard (Committee Chair), Guia Gilardoni (Committee Vice-chair), Adham Aly, Jelena Džankić, Marco Martiniello, Marshia Akbar, Nir Cohen, Thais França, Zeynep Sahin Menkütek.

Editorial Committee

This is the Editorial Committee for the IMISCOE Research series associated with Springer.

Members: Anna Triandafyllidou (Committee Chair), Irina Isaakyan (Managing editor), Agata Górný, Aneta Piekut, Ayhan Kaya, Benjamin Etzold, Eva Østergaard-Nielsen, Helen Schwenken, Irene Ponzo, Justyna Salamońska, Karin Borevi, Laura Oso, Luigi Achilli, Matteo Bonotti, Panos Hatziprokopiou, Sabrina Marchetti, Stephan Scheel, Stephanie Alison Condon.

Elections Committee

This Committee manages and ensures the fairness and transparency of all elections in IMISCOE.

Members: Sebastián Umpierrez de Reguero, Sorina Soare, Verena Wisthaler.

External Affairs Committee

The Committee deals with promotion of IMISCOE bridges between research, policy, and society.

Members: Ricard Zapata-Barrero (Committee Chair), Albert Kraler, Asya Pisarevskaya, Ibrahim Awad, Ingrid Ríos, Raquel Matias, Verena Wisthaler.

One of the outputs of the External Affairs Committee is the IMISCOE Migration Podcast, exploring the latest in migration and mobility research globally.

Finance Committee

This Committee serves as the IMISCOE Network's auditing committee.

Members: Veronika Bilger and Paweł Kaczmarczyk.

IMISCOE PhD Network

The IMISCOE PhD Network connects PhD students worldwide with the IMISCOE Network.

Members of the PhD Network Board: Billie Martiniello (PhD Network Chair), Mateusz M. Krawczyk (Vice-chair), Agnese Pacciardi (Vice-chair), Adriana Calvo, Alice Fill, Diletta Marcucci, Elina Jonitz, Gunika Rishi, Lucy Potter, Silvia Talavera Lodos, Tulika Bourai, Irene Gutiérrez Torres.

Members of the PhD Network Advisory Board: Carolin Müller, Maria Shaidrova, Olav Nygård, Samuel D. Schmid, Sandra N. Morgenstern, Simona Schreier, Sebastian Carlotti

Members of the PhD Network Blog Group: Irene Gutiérrez Torres (Blog Group Coordinator), Jami Abramson, Gianna Eckert, Nacera Haouchine, Connie Hodgkinson Lahiff, Aneesha Jonny, Rohini Mitra, Mimi Ocadiz Arriaga, Berfin Nur Osso.

Training Committee

This Committee encourages and facilitates training activities by organizing

the IMISCOE PhD Academy.

Members: Marta Bivand Erdal (Committee Chair), Mateusz Krawczyk (PhD Network representative), Alice Fill (PhD Network representative), Cosmin Nada, Eleonore Kofman, Emmaleena Käkelä, Laura Morales, Nomkhosi Mbatha, Saleh Seid Adem, Thais França.

Research Infrastructure

IMISCOE Standing Committees (SC)

Promoting high-quality and impactful research is the central aim of IMISCOE. To achieve this, 11 Standing Committees organized around broad research topics are in place.

SC Education and Social Inequality (EduSocial)

Coordinators: Thais França, Elif Keskiner, Zehra Colak, Christine Lang, Jens Schneider

PhD representative: Yao Xie

SC Families, Welfare, Care and the Life Course

Coordinators: Tineke Fokkema, Ruxandra Oana Ciobanu

SC Gender and Sexuality in Migration Research (GenSeM)

Coordinators: Sarah Scuzzarello, Laura Morosanu

PhD representatives: Agnese Pacciardi, Marwa Neji, Abu Saleh Mohammad Sowad

SC Methodological Approaches and Tools in Migration Research (Meth@Mig)

Coordinator: Agata Górny, Steffen Pötzschke, Justyna Salamońska, Sebastian Rinken, Evren Yalaz

PhD representative: Laila Omar

SC Migrant Transnationalism (MITRA)

Coordinators: Özge Bilgili, Brigitte Suter

PhD representative: Yichi Zhang, Bianca Luna

SC Migration, Citizenship and Political Participation (MIGCITPOL)

Coordinators: Gianni D'Amato, Jean-Thomas Arrighi, Ana Margheritis, Luicy Pedroza, Sebastián Umpiérrez de Reguero

PhD representative: Sebastián Umpiérrez de Reguero

SC Migration, Migrants and Labour Markets (IILME)

Coordinators: Stefania Marino, Anders Neergaard

PhD representatives: Esteban Perez Gnavi, Philippa Brunner-Heywood

Members of the Steering Committee: Nahikari Irastorza, Lisa Bertsen, Rinus Penninx, Katarina Hollan, Esteban Perez Gnavi, Philippa Brunner-Heywood

SC Migration Politics and Governance (MigPoG)

Coordinators: Cathrine Talleraas, Maria Schiller

PhD representatives: Andrea Ricci, Zeznep Aydar

SC Race, Racism and Discrimination (RACED)

Coordinators: Patrick Simon, Sayaka Osanami Törngren, Valentina Di Stasio, Guia Gilardoni, Marcel Maussen, Nina Sahraoui

PhD representatives: Doris Niragire, Eduardo Campbell Bethancourt, Shahab Mirbabaei

SC Reflexivities in Migration Studies (Reflexivities)

Coordinators: Anna-Lisa Müller, Janine Dahinden, Andreas Pott

PhD representative: Stefan Manser-Egli

SC Superdiversity, Migration and Cultural Change (DIVCULT)

Coordinators: Marco Martiniello, Wiebke Sievers; Elsa Mescoli (assistant coordinator)

PhD representative: Joanna Jurkiewicz.

Migration Research Hub

IMISCOE's Migration Research Hub (MRH) is an interactive research database that brings publications, datasets and projects together under one roof: <https://www.migrationresearch.com/>. This constantly growing database lists profiles of experts in migration studies, highlighting the topics, methods and disciplines of their expertise. With this tool, scholars and stakeholders can easily find relevant literature, data and other information structured according to the taxonomy of migration studies. The Migration Research Hub was developed in collaboration with two IT companies: YoungMinds (led by Bogdan Taut) and Dotdesign (led by Alexandru Butică). The information gathered in the Hub relies on a number of connections with databases that feed automatically the MRH and researchers' profiles. One such database is Clarivate Web of Science, with which IMISCOE has signed a service agreement.

IMISCOE Awards

Maria Baganha Award

Since 2010, the Maria Ioannis Baganha Distinguished Dissertation Award stimulates and recognizes excellent PhD research in the field of migration. Maria Ioannis Baganha was a leading migration scholar at the University of Coimbra. She was one of the IMISCOE's founding members and the chair of its Board of Directors until she passed away in June 2009. To commemorate her work and commitment to the network, the IMISCOE Board of Directors has dedicated the IMISCOE dissertation award to her.

Award Committee Members: Rosa Aparicio (Chair), Endre Sik, Giuseppe Sciorino, Han Entzinger, Lena Näre, Mathias Czaika, Paweł Kaczmarczyk, Russell King, Thais França.

Rinus Penninx Best Paper Award

The Best Paper Award was established in 2014 and is chaired by retired IMISCOE coordinator Rinus Penninx. This Award celebrates every year the best paper submitted to and presented at the IMISCOE Annual conference following a rigorous review process.

Jury members: Rinus Penninx (Chair), Anja Van Heelsum, Blanca Garcés-Masareñas, Deniz Sert, Gianni D'Amato, Jens Schneider, Laura Oso, Marta Pachocka, Pedro Gois, Rene Kreichauf.

Forthcoming IMISCOE Events

Throughout the year, numerous IMISCOE events are organized in the context of research collaborations, publication events, PhD trainings, etc. The biggest event on the Network's agenda is the IMISCOE Annual Conference, which has been organized every year since 2004 by different IMISCOE Member Institutes. Other important annual events are the IMISCOE Spring Conference and the IMISCOE PhD School. Besides these annual events, numerous activities are organized throughout the year by the various Standing and Executive Committees of the IMISCOE Network.

See detailed information about forthcoming IMISCOE Events here: <https://www.imiscoe.org/events>

2025 Spring Conference

Regularity of Irregularity: Rethinking Migration Paradigms

17-19 March 2025, Krems, Austria

Organizer: University for Continuing Education Krems, Department for Migration and Globalisation

2025 Annual Conference

Decentering Migration Studies

1-4 July 2025, Paris – Aubervilliers, France

Organizer: Institut Convergences Migrations, IC Migrations (consortium)

of eight major partners- Ined, CNRS, IRD, EHESS, EPHE, Université Paris 1, Inserm, Collège de France)

2025 IMISCOE PhD School

Developing a Sensory Methodology in Migration Studies

25-29 August 2025, Lisbon, Portugal

Organizers: The Institute of Geography and Spatial Planning (IGOT), University of Lisbon, in cooperation with the Jagiellonian University

Collaborations, sponsorships, and agreements with third parties

Comparative Migration Studies

Comparative Migration Studies (CMS) is an international, peer-reviewed Open Access journal that provides a platform for articles that focus on comparative research in migration, integration, and race and ethnic relations. IMISCOE is sponsoring the journal and fully supports each year a number of Open Access articles published by IMISCOE members, while also providing some fee waivers for authors based in institutions outside of the EU/OECD countries.

EuMIGS (European Master in Migration Studies)

IMISCOE supports the EuMIGS network- European Master in Migration Studies. The network involves 13 partner institutes in 10 European countries of which 7 are part of the double degree Master's programme in the field of migration. Students enrolled in the master programme at any of the 7 partner universities in A Coruña, Liège, Linköping, Malmö, Neuchâtel, Osnabrück, and Salzburg can apply to spend their second year at another partner university abroad and obtain a master diploma from both their home and host university. In the framework of the collaboration with IMISCOE, EuMIGS students are also invited to attend the IMISCOE Annual Conference to present their master theses.

Conference platform, IMISCOE website & Webex

Two important online components of IMISCOE's research infrastructure are the IMISCOE website the Annual Conference Platform. For both the website and the conference platform, the IMISCOE Network Office works closely with the IT provider DesignServer, led by René de Ree and Marco Legemaate. Moreover, IMISCOE's subscription to Cisco Webex allows the use of this tool for all online and hybrid events organized by the Network, including the Annual Conference. IMISCOE's governance bodies also make a recurrent use of Webex for their events and meetings.



**On behalf of the organizers,
we express our thanks to all
those involved in the making
of this conference.**

IMISCOE