

# Do you know IMISCOE?

IMISCOE

Coordinated by



LIÈGE université  
CEDEM



<https://www.imiscoe.org/>





## IMISCOE Network in brief

- **~1500 migration scholars** around the world
- **68 research institutes** from different countries
- **Various disciplines** (sociology, political science, anthropology, economics, law, demography, geography, history, etc.)
- **A commitment to diversity and inclusion** in membership, governance and activities
- Coordination at the **Centre for Ethnic and Migration Studies (CEDEM) of the University of Liège** (Belgium)

---

# IMISCOE's mission

**Research**

**Publications**

**Events**

**Training &  
awards**



[www.imiscoe.org/about-imiscoe/mission](http://www.imiscoe.org/about-imiscoe/mission)







# Research activities

- [Education and social inequality \(EduSocial\)](#)
- [Forced Migration and Refugees \(FMR\)](#)
- [Families, Welfare, Care and the Life Course \(FamWeLc\)](#)
- [Gender and sexuality in migration research \(GenSem\)](#)
- [Methodological approaches and tools in migration research \(Meth@Mig\)](#)
- [Migrant Transnationalism \(MITRA\)](#)
- [Migration, citizenship and political participation \(MIGCIPOL\)](#)
- [Migration, migrants and labour markets \(IILME\)](#)
- [Migration politics and governance \(MiGPoG\)](#)
- [Race, racism and discrimination \(RACED\)](#)
- [Reflexivities in migration studies \(Reflexivities\)](#)
- [Arts, Culture and Migration \(DIVCULT\)](#)



# Publications

To promote the dissemination of research and the widest possible access to research, IMISCOE has become the leading supporter of **Open Access publishing** in this research area.



Springer Open



- IMISCOE has established a [book series](#) with Springer.
- Most books are available for free download in the [OAPEN](#) library.
- Sponsorship of the Open Access journal [Comparative Migration Studies](#).



# Events



## Annual Conference

- On-site & online
- ~1500 participants around the world

## Spring Conference

- Thematically-focused event
- ~150 participants

## PhD School

- Training in theoretical frameworks & methods

## Other events

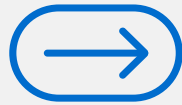
- Organised throughout the year by various IMISCOE Standing & Executive Committees

# Training & Awards

---

The [IMISCOE PhD Network](#) aims to strengthen research and networking opportunities for doctoral researchers in the field of migration.

The [IMISCOE PhD Academy](#) connects PhD students in the broad field of migration research and provides migration research training and mentoring to support the IMISCOE PhD network community.



Training of young researchers is an essential task of IMISCOE. The Network facilitates the highest quality training in the field of migration studies.

[www.imiscoe.org/training-phds/](http://www.imiscoe.org/training-phds/)



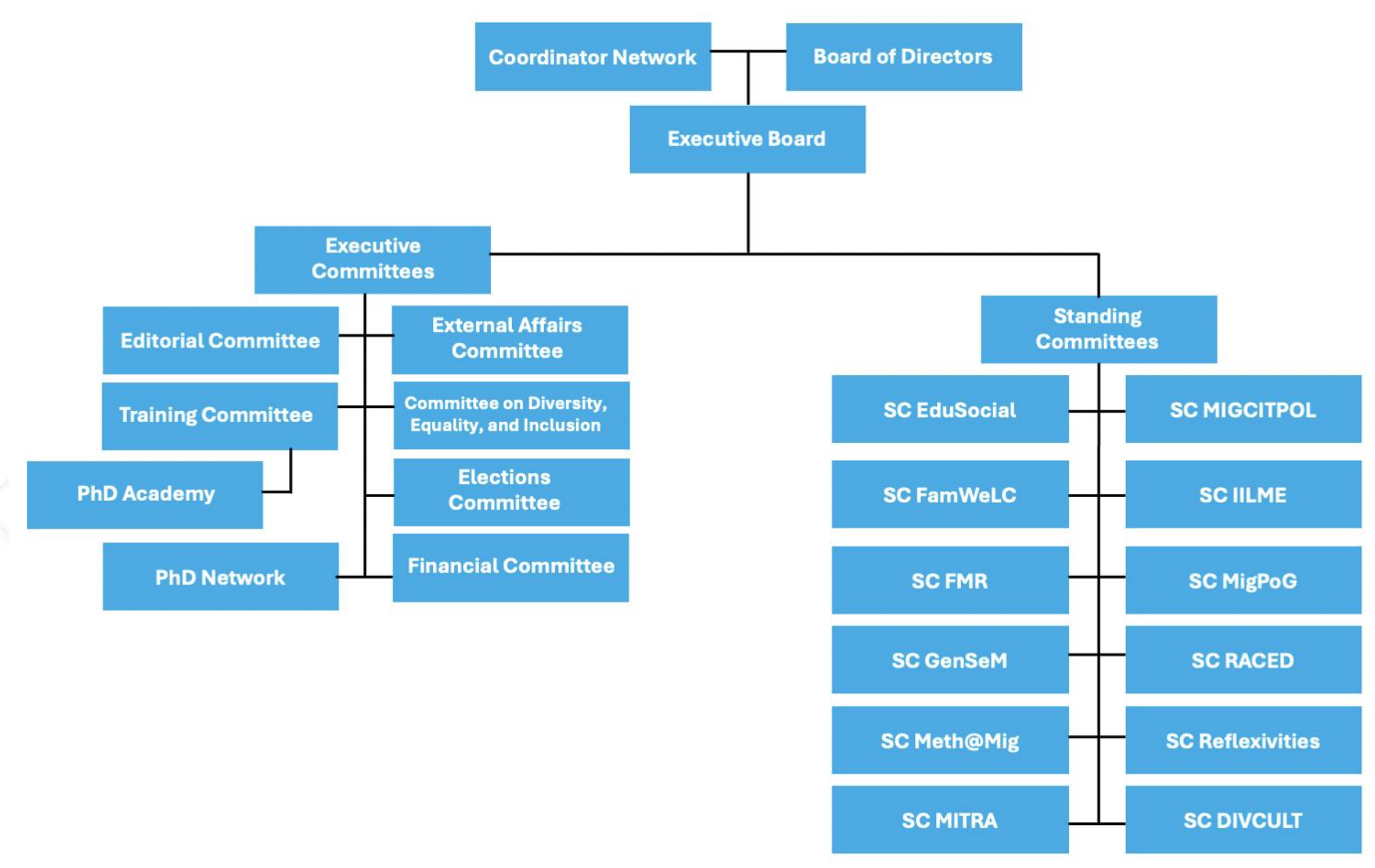
Every year IMISCOE awards the [Maria Ioannis Baganha Award](#) for the best PhD thesis in the field of migration, and the [Rinus Penninx Award](#) for the best paper presented at the IMISCOE Annual Conference.

IMISCOE supports the [EuMIGS network](#)-European Master in Migration Studies, involving 13 partner institutes in 10 European countries.





# IMISCOE's governance



The collaboration between IMISCOE Member Institutes is based on a Consortium Agreement. The IMISCOE Network is led by the **Board of Directors**, which delegates most of its tasks to the **IMISCOE Coordinators**. The Coordinators are supported by a **Network Office** that fulfills IMISCOE's day to day tasks, and by an **Executive Board** that prepares much of the decisions taken by the Board of Directors. In addition, IMISCOE has established a number of **Executive Committees**.

[www.imiscoe.org/about-imiscoe/organisation](http://www.imiscoe.org/about-imiscoe/organisation) X



# IMISCOE Coordinators



Jean-Michel Lafleur



Daniela Vintila



[www.imiscoe.org/about-imiscoe/organisation/office](http://www.imiscoe.org/about-imiscoe/organisation/office) X

## Network Officers



Angeliki Konstantinidou



Carole Wenger



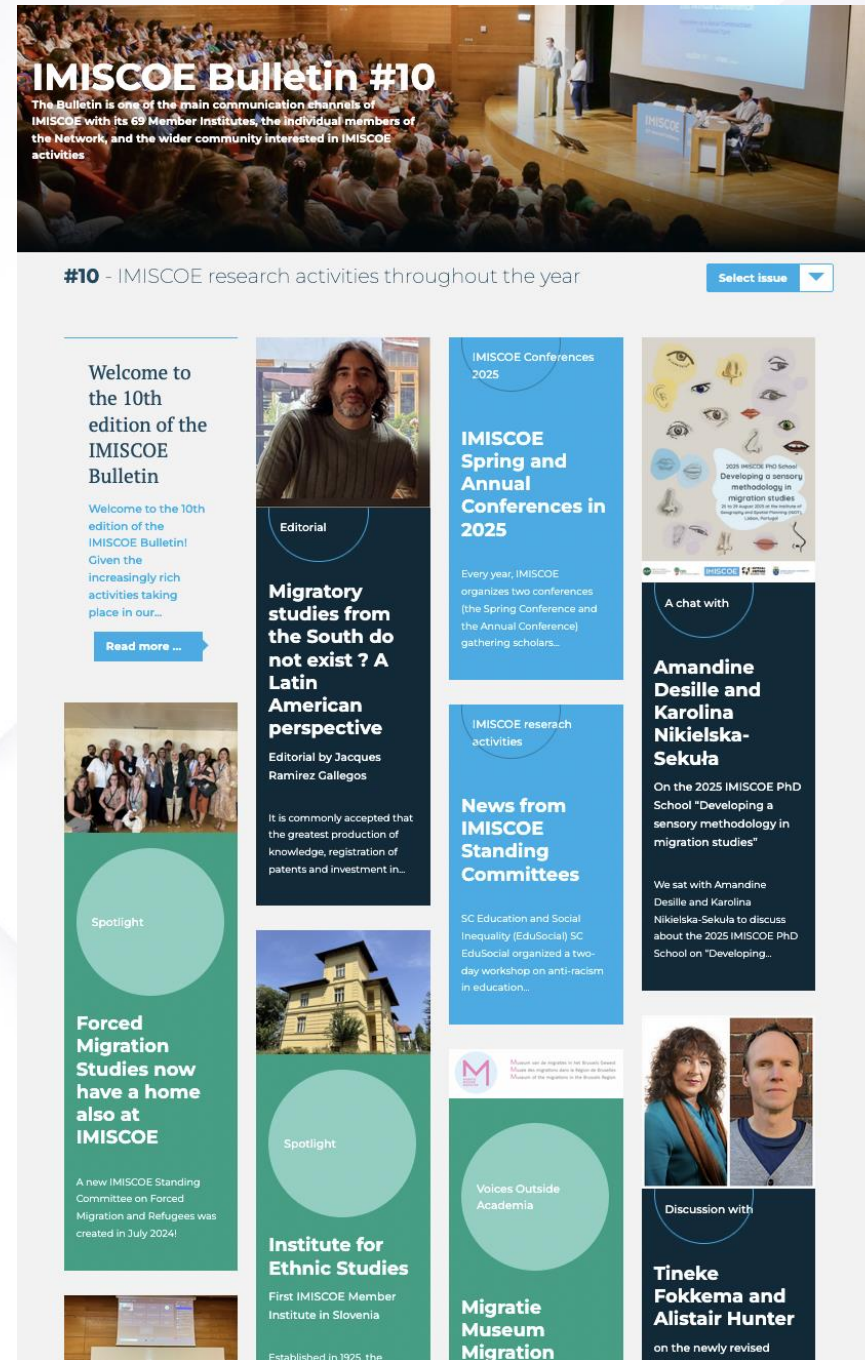
Marine Maréchal

# CURRENT MEMBERS OF THE BOARD OF DIRECTORS & IMISCOE Member Institutes



|  |  |  |  |  |   |   |   |
|--|--|--|--|--|---|---|---|
| <b>Ahmet İçduygu</b>                                   | MiReKoc, Koç University  | <b>Giuseppe Sciortino</b>                    | International Migration Laboratory (IML), University of Trento   | <b>Marco Martiniello</b>                                   | Centre for Ethnic and Migration Studies (CEDEM), University of Liège                    | <b>Sebastián Umpierrez de Reguero / Ingrid Ríos</b> | Casa Grande University  |
| <b>Anders Neergaard</b>                                | Institute for Research on Migration, Ethnicity and Society (REMESO), Linköping University                  | <b>Goranka Lalić Novak</b>                   | University of Zagreb   | <b>Margit Fauser</b>                                       | Ruhr Universität Bochum   | <b>Sonja Novak Lukanović</b>                        | Institute for Ethnic Studies (IES)  |
| <b>Andrea Spehar</b>                                   | Centre on Global Migration (CGM), University of Gothenburg   | <b>Gorka Urrutia Asua</b>                    | Research Unit on Migration, Management of Diversity and Social Cohesion, University of Deusto              | <b>Marie-Caroline Saglio-Yatzimirsky / Camille Schmoll</b> | Institut Convergences Migrations (ICM)  | <b>Stefania Marino</b>                              | Work and Equalities Institute (WEI), University of Manchester   |
| <b>Andreas Pott / Helen Schwenken</b>                  | Institute for Migration Research and Intercultural Studies (IMIS), University of Osnabrück                 | <b>Guia Gilardoni</b>                        | Fondazione Ismu - Initiative e Studi sulla Multietnicità (ISMU)  | <b>Marie Sandberg</b>                                      | Centre for Advanced Migration Studies (AMIS), University of Copenhagen                  | <b>Steven Vertovec / Ulrike Bialas</b>              | Max Planck Institute for the Study of Religious and Ethnic Diversity (MPI-MMG)                          |
| <b>Andrew Geddes</b>                                   | European University Institute (EUI)  | <b>Hanne Kavli / Guri Tyldum</b>             | Institute for Labour and Social Research (FAFO)  | <b>Mathias Czaika / Albert Kraler</b>                      | Department for Migration and Globalisation (DEMIG), Danube University Krems             | <b>Thais França</b>                                 | Centre for Research and Studies in Sociology (CIES-Iscte), University Institute of Lisbon               |
| <b>Anja van Heelsum / Saskia Bonjour / Bram Lancee</b> | Amsterdam Research Centre - Migration (ARC-M), University of Amsterdam                                     | <b>Helga de Valk</b>                         | Netherlands Interdisciplinary Demographic Institute (NIDI)   | <b>Milena Belloni</b>                                      | The Network on Migration and Global Mobility (MIGLOBA), University of Antwerp           | <b>Verena Wisthaler</b>                             | Institute for Minority Rights (IMR), EURAC Research   |
| <b>Anja Weiß</b>                                       | Interdisciplinary Centre for Integration and Migration Research (InZENTIM), University of Duisburg - Essen | <b>Ibrahim Awad</b>                          | Centre for Migration and Refugee Studies (CMRS), American University Cairo                                 | <b>Muhammad Zaman / Carrie Preston</b>                     | Center on Forced Displacement, Boston University  | <b>Veronika Bilger</b>                              | International Centre for Migration Policy Development (ICMPD)   |
| <b>Anna Triandafyllidou</b>                            | CERC in Migration and Integration, Toronto Metropolitan University   | <b>Ilke Adam / Hannah Vermaut</b>            | Brussels Interdisciplinary Research Centre on Migration and Minorities (BIRMM), Vrije Universiteit Brussel | <b>Olaf P. van Vliet</b>                                   | Leiden Interdisciplinary Migration Seminar (LIMS), Leiden University                    | <b>Virginie Guiraudon</b>                           | Sciences Po   |
| <b>Benjamin Etzold</b>                                 | Bonn International Centre for Conflict Studies (BICC)  | <b>Ilse Derluyn / Floor Verhaeghe</b>        | Centre for the Social Study of Migration and Refugees (CESSMIR), Ghent University                          | <b>Òscar Prieto Flores</b>                                 | University of Girona  | <b>Wiebke Sievers</b>                               | Institute for Urban and Regional Research (ISR), Austrian Academy of Sciences                           |
| <b>Birte Nienaber</b>                                  | Faculty of Humanities, Education and Social Sciences (FHSE), University of Luxembourg                      | <b>Jan Paul Brekke</b>                       | Institute for Social Research Oslo (ISF)   | <b>Özge Bilgili</b>  | European Centre on Migration and Ethnic Relations (ERCOMER), Utrecht University         | <b>Yoan Molinero</b>                                | Instituto Universitario de Estudios sobre Migraciones (IUEM), Universidad Pontificia Comillas de Madrid |
| <b>Caitriona Ni Laoire</b>                             | University College Cork  | <b>Jaqueline Broadhead</b>                   | Centre on Migration, Policy and Society (COMPAS), University of Oxford                                     | <b>Parvati Raghuram</b>                                    | Open University   | <b>Zeynep Yanasmayan</b>                            | Deutsche Zentrum für Integrations und Migrationsforschung (DeZIM)                                       |
| <b>Dušan Drbohlav</b>                                  | Geographic Migration Centre (GEOMIGRACE), Charles University   | <b>John Wrench</b>                           | NTNU Social Research Centre for Diversity and Inclusion  | <b>Pascal Beckers</b>                                      | Radboud University Network on Migration Inclusion (RUNOMI), Radboud University          |   |   |
| <b>Eleonore Kofman</b>                                 | Middlesex University   | <b>Jørgen Carling</b>                        | Peace Research Institute Oslo (PRIO)   | <b>Patrick Simon</b>                                       | Institut National d'Études Démographiques (INED)  |   |   |
| <b>Federica Infantino</b>                              | Unité de Recherches Migrations et Société (URMIS), University of Côte d'Azur                               | <b>Karlijn Haagsman</b>                      | Maastricht Centre for Citizenship, Migration and Development (MACIMIDE), Maastricht University             | <b>Paul Long</b>   | Monash Migration and Inclusion Centre (MMIC), Monash University                         |   |   |
| <b>Ferruccio Pastore</b>                               | Forum Internazionale ed Europeo di Ricerche sull'Immigrazione (FIERI)                                      | <b>Kristian Tronstad</b>                     | Norwegian Institute for Urban and Regional Research (NIBR), Oslo Metropolitan University                   | <b>Paweł Kaczmarczyk</b>                                   | Centre of Migration Research (CMR), University of Warsaw                                |   |   |
| <b>Francesca Campomori</b>                             | UNIVE, Ca'Foscari University   | <b>Kyoko Shinozaki / Wolfgang Aschauer</b>   | Salzburg Migration and Mobility Studies Lab (MML PLUS), Paris Lodron, University Salzburg                  | <b>Peter Scholten</b>                                      | Erasmus University Rotterdam (EUR)  |   |   |
| <b>Francesca Stella</b>                                | Glasgow Refugee, Asylum and Migration Network (GRAMNet), University of Glasgow                             | <b>Lara Momesso / Ecaterina Stefanescu</b>   | Lancashire Research Centre for Migration, Diaspora and Exile (MIDEX), University of Central Lancashire     | <b>Pieter Bevelander</b>                                   | Malmö Institute for Studies of Migration, Diversity and Welfare (MIM), Malmö University |   |   |
| <b>Gianni D'Amato</b>                                  | Swiss Forum for Migration and Population Studies (SFM), University of Neuchâtel                            | <b>Laura Oso</b>                             | Societies in Motion Research Team (ESOMI), University of A Coruña  | <b>Ricard Zapata-Barbero / Zenia Hellgren</b>              | Interdisciplinary Research Group in Immigration (GRITIM), Universitat Pompeu Fabra      |   |   |
|  |  | <b>Lucinda Fonseca / Jennifer McGarrigle</b> | Institute de Geografia e Ordenamento de Território (IGOT - UL), University of Lisbon                       | <b>Saara Pellander / Marja Tiilikainen</b>                 | Migration Institute of Finland (MIF)  |   |   |
|  |  |  |  | <b>Sarah Scuzzarello</b>                                   | Sussex Centre for Migration Research (SCMR), University of Sussex                       |   |   |





# IMISCOE Communication

IMISCOE maintains several communications channels to ensure that the results of its research are available to the public at large as well as to policymakers and other stakeholders

- **IMISCOE Bulletin:** published 3 times per year
- **IMISCOE Annual Report:** published every year
- **PhD Blogs:** regularly updated throughout the year
- **SC Blogs:** regularly updated throughout the year



# IMISCOE

## Podcast & Migration Research Hub

- **IMISCOE Migration Podcast:** provides a platform for migration scholars to speak about their projects, ideas and insights. Episodes feature people engaged in research worldwide, and across various career stages
- **IMISCOE Migration Research Hub:** interactive database connecting publications, datasets, and experts. Find migration data and publications all in one place + a directory of experts in the field of migration



the migration podcast

Learn more about migration research all around the world

IMISCOE the migration podcast

REPOST Borders and Belonging: The rise of digital nomads

Maggie Perzyna

While we take a break from our regular programming before our fifth season – we have a special treat for you!

listen

IMISCOE the migration podcast

The resilience of xenophobia

Asya Pisarevskaya speaks with Mathew Creighton about his recent book "Hidden Hate: The Resilience of Xenophobia."

listen

IMISCOE the migration podcast

Ukrainian emigration to Poland

Ivana Kyliushyk

"Even the market next to the station was called Warsaw Market." In this episode you'll hear Louise Ryan interview Ivana Kyliushyk about the

listen

the migration podcast

Introducing: Migration Talks- The Impact Of Migration Narratives on EU Policymaking

BIRMM

Check out the "Migration Talks" podcast and the recent episode on the impact of migration narratives on EU policymaking, just in time for the EP

listen

[www.imiscoe.org/news-and-blog/podcast](http://www.imiscoe.org/news-and-blog/podcast)

Brings experts, publications, datasets and projects together under one roof.

**Migration Research Hub**

[www.imiscoe.org/research/research-hub](http://www.imiscoe.org/research/research-hub)

# Upcoming IMISCOE events

## 2025 Annual Conference:

### *Decentering Migration Studies*

July 1-4 2025, Paris–Aubervilliers, France & online



## 2025 PhD School:

### *Developing a Sensory Methodology in Migration Studies*

August 25-29 2025, Lisbon, Portugal





# IMISCOE membership

Becoming an institutional member of IMISCOE gives access to various **benefits and opportunities.**



[www.imiscoe.org/about-imiscoe/members/becoming-a-member](http://www.imiscoe.org/about-imiscoe/members/becoming-a-member)



■ **Participate in IMISCOE's Board of Directors** (one representative per Member Institute) **and Executive Board**, to decide on the Network's activities and events

■ **Chair IMISCOE's Executive Committees** (Editorial Committee, Training Committee, Finance Committee, External Affairs Committee, Committee on Diversity, Equality and Inclusion, Elections Committee, PhD Network)

■ **Host IMISCOE's yearly events** (Annual Conference, Spring Conference, PhD School) **and receive subsidies for their organization**

■ **Chair IMISCOE's Standing Committee and receive yearly subsidies** for their activities and events

■ **Financial support for Open Access publishing** in the IMISCOE book series with Springer and the Comparative Migration Studies journal

■ **Highly discounted rates** for the participation of all scholars affiliated to an IMISCOE Member Institute in the Network's events (reduced registration rates for attending the IMISCOE Annual Conference, PhD Schools)

## **Institutional membership applications:**

- Contact IMISCOE's Network Office ([info@imiscoe.org](mailto:info@imiscoe.org))
- Applications can be submitted throughout the year. Reviewed by IMISCOE' Executive Board and approved by the Board of Directors in one of its two yearly meetings
- Successful applications: signature of the Consortium Agreement & payment of institutional fees (3.000€/year for Institutes based in EU/OECD countries; 1.500€/year for Institutes based outside of the in EU/OECD)



**Thank  
You.**



[info@imiscoe.org](mailto:info@imiscoe.org)



[www.imiscoe.org/](http://www.imiscoe.org/)

**JOIN US**